



LumiStone – inspiring performance

LumiStone SP520P/SP522P/SP524P/SP526P

Customers within the office, retail and hospitality sectors want to create spaces with a pleasant and inviting atmosphere. Luminaires with an appealing design and top-notch performance play a pivotal role in achieving this. LumiStone is a LED luminaire consisting of two smaller ellipses rather than the traditional single voluminous piece. The ellipses have soft curvatures and resemble smooth stones found in nature. The flexible light effects created with direct and indirect light make LumiStone the perfect choice for inspiring lighting designs. Thanks to its cutting-edge LED technology, LumiStone is also highly energy-efficient, delivering immediate savings on operational costs. A range of innovative mounting options make LumiStone extremely versatile in application.

Benefits

- Creates a truly inspiring environment with appealing design and indirect lighting
- Over 50% energy savings compared to a functional luminaire, and even more compared to decorative solutions
- Many variations thanks to innovative mounting options

Features

- Choice of direct and direct/indirect lighting
- Office norm-compliant
- Versions available for concrete and recessed ceilings

Application

- Offices – general and task lighting
- Retail
- Hospitality

Specifications

LumiStone SP520P/SP522P/SP524P/SP526P

Type	SP520P (dual module, clips to an exposed T-bar ceiling, direct lighting)
	SP522P (dual module, clips to an exposed T-bar ceiling, direct and indirect lighting)
	SP524P (dual module, decorative ceiling bar, direct lighting)
	SP526P (dual module, decorative ceiling bar, direct and indirect lighting)
Light source	Philips LED module PP
Power (+/-10%)	SP520P and SP524P: 29 W, 31 W
	SP522P and SP526P: 38 W, 40 W
Luminous flux	SP520P and SP524P: 3000 lm in total, 1500 lm for each ellipse
	SP522P and SP526P: 4000 lm in total, 2000 lm for each ellipse
Correlated Colour Temperature	3000 or 4000 K
Colour Rendering Index	≥ 80
Median useful life L80B50	50,000 hours
Median useful life L90B50	25,000 hours
Driver failure rate	1% per 5000 hours
Average ambient temperature	+25 °C

Operating temperature range	+10 to +40°C
Driver	SP520P and SP522P: separate
	SP524P and SP526P: built in
Mains voltage	220-240 V / 50-60 Hz
Dimming	Dimmable
Controls system input	DALI
Material	Housing and optics: poly-carbonate
Colour	White (WH) and light grey (GR)
Optic	Poly-carbonate LED cup
Connection	Push-in connector with pull relief
Installation	SP520P and SP522P: connection with clips to an exposed T-bar ceiling with two triangular steel-wire suspensions (SMTT), both with metal-like power cord, 150 cm, driver in separate driver box
	SP524P and SP526P: decorative ceiling bar with integrated driver, screw mounting to ceiling
	Through-wiring possible: no

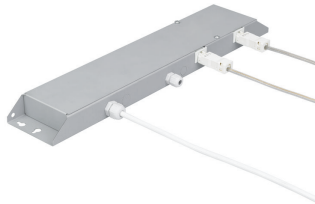
Versions



LumiStone SP524/526P suspended luminaire

LumiStone SP520P/SP522P/SP524P/SP526P

Product details



LumiStone SP520P/SP522P/SP524P/SP526P

Application Conditions

Ambient temperature range	+10 to +40 °C
Maximum dim level	1%
Suitable for random switching	Yes (relates to presence/ movement detection and daylight harvesting)

Approval and Application

Mech. impact protection code	IK02
------------------------------	------

Controls and Dimming

Dimmable	Yes
----------	-----

Operating and Electrical

Input Voltage	220-240 V
---------------	-----------

General Information

Beam angle of light source	- °
CE mark	CE mark
Protection class IEC	Safety class I (I)
Driver included	Yes
ENEC mark	ENEC plus mark
Flammability mark	F
Light source replaceable	No
Number of gear units	1 unit
Number of light sources	2
Optic type	No
UL mark	No

Initial Performance (IEC Compliant)

Init. Corr. Colour Temperature	4000 K
Init. Colour Rendering Index	≥80
Luminous flux tolerance	+/-10%

Approval and Application

Order Code	Full Product Name	Ingress protection code
910504079803	SP520P 2xLED15S/840 PSD-E SMTT WH	IP20
910504080203	SP522P 2xLED20S/840 PSD-E SMTT WH	IP20
910504080303	SP522P 2xLED20S/840 PSD-E SMTT GR	IP20
910504081003	SP526P 2xLED20S/840 PSD DCB WH	IP40
910504081103	SP526P 2xLED20S/840 PSD DCB GR	IP40

General Information

Order Code	Full Product Name	Cap-Base	Glow-wire test	Lamp family code	Product
					Family Code
910504079803	SP520P 2xLED15S/840 PSD-E SMTT WH	-	850/5	LED15S	SP520P
910504080203	SP522P 2xLED20S/840 PSD-E SMTT WH	-	850/5	LED20S	SP522P
910504080303	SP522P 2xLED20S/840 PSD-E SMTT GR	-	850/5	LED20S	SP522P

Order Code	Full Product Name	Cap-Base	Glow-wire test	Lamp family code	Product
					Family Code
910504081003	SP526P 2xLED20S/840 PSD DCB WH	-	750/5	LED20S	SP526P
910504081103	SP526P 2xLED20S/840 PSD DCB GR	-	750/5	LED20S	SP526P

Initial Performance (IEC Compliant)

LumiStone SP520P/SP522P/SP524P/SP526P

Order Code	Full Product Name	Initial chromaticity	Initial LED luminaire efficacy	Initial luminous flux	Initial input power
910504079803	SP520P 2xLED15S/840 PSD-E SMTT WH	(0.38, 0.38) SDCM <3	133 lm/W	3000 lm	22.5 W
910504080203	SP522P 2xLED20S/840 PSD-E SMTT WH	(0.38, 0.38) SDCM <3	143 lm/W	4000 lm	28 W
910504080303	SP522P 2xLED20S/840 PSD-E SMTT GR	(0.38, 0.38) SDCM <3	143 lm/W	4000 lm	28 W

Order Code	Full Product Name	Initial chromaticity	Initial LED luminaire efficacy	Initial luminous flux	Initial input power
910504081003	SP526P 2xLED20S/840 PSD DCB WH	(0.38, 0.38) SDCM <3.5	143 lm/W	4000 lm	28 W
910504081103	SP526P 2xLED20S/840 PSD DCB GR	(0.38, 0.38) SDCM <3	143 lm/W	4000 lm	28 W

Mechanical and Housing

Order Code	Full Product Name	Colour
910504079803	SP520P 2xLED15S/840 PSD-E SMTT WH	White
910504080203	SP522P 2xLED20S/840 PSD-E SMTT WH	White
910504080303	SP522P 2xLED20S/840 PSD-E SMTT GR	Grey

Order Code	Full Product Name	Colour
910504081003	SP526P 2xLED20S/840 PSD DCB WH	White
910504081103	SP526P 2xLED20S/840 PSD DCB GR	Grey

