



Lineco TMS022

Lineco TMS022

Functional and economical general-purpose basic batten for TL-D fluorescent lamp(s) with choice of two optics for symmetrical or asymmetrical lighting. For surface mounting. A repositionable contact block makes a flexible connection possible and keeps the installation costs low.

Benefits

- An economical choice, with a functional surface-mounted batten for 1 or 2 TL-D fluorescent lamps
- Choice of optics for symmetrical or asymmetrical light distribution
- Quick, tool-less installation can be carried out single-handedly

Features

- Choice of one or two TL-D fluorescent lamps
- Choice of symmetrical or asymmetrical optics
- Quick, tool-less installation
- Repositionable contact block
- Wide range of snap-on attachments

Application

- Retail
- Industry

Specifications

Type	TMS022
Light source	Fluorescent: - 1 x or 2 x MASTER TL-D / G13 / 15, 18, 30, 36, 58 W
Lamp included	Yes (lamp color 830 or 840) No

Gear	Electro magnetic (low loss), 230 V / 50 Hz:
	- Inductive (I)
	- Inductive, parallel compensated (IC)
	Electronic, 220 - 240 V / 50 - 60 Hz:
	- High Frequency Performer (HFP)
	- High Frequency Regulator (HFR)
	- Electronic Included (EI)
Connection	Push-in connector (PI)

Lineco TMS022

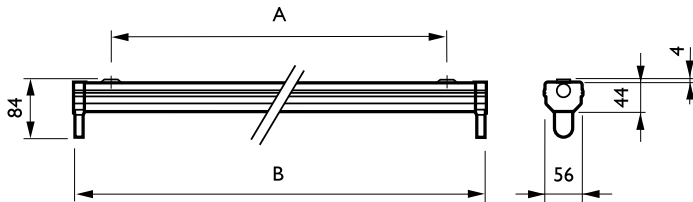
Option	Through-wiring: 1-phase (TW1) Dedicated batten with fixing points for C-reflectors only (SH)
Material	Sheet steel, white
Installation	Individual; screw mounting Possibility to reposition the contact block (2-lamp version)

Accessory	White one-piece symmetrical reflector (for 1- and 2-lamp versions), asymmetrical reflector (for 1-lamp version), C-aluminum trough reflector used with -SH type battens
Main applications	Retail, industry

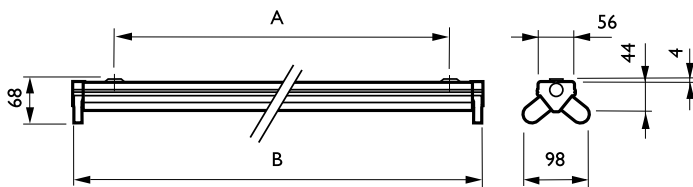
Versions



Dimensional drawing



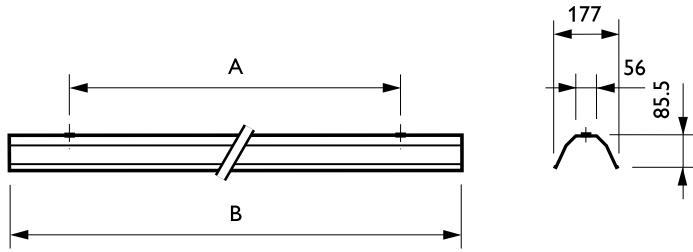
Product
TMS022 1xTL-D30W HF
TMS022 1xTL-D18W HF
TMS022 1xTL-D58W HF
TMS022 1xTL-D36W HF
TMS022 1xTL-D30W HFS
TMS022 1xTL-D58W HFS
TMS022 1xTL-D36W HFS
TMS022 1xTL-D58W/840 HFRUK
TMS022 1xTL-D18W HFS



Product
TMS022 2xTL-D18W HF
TMS022 2xTL-D58W HF SH
TMS022 2xTL-D36W HF SH
TMS022 2xTL-D58W HF
TMS022 2xTL-D36W HF
TMS022 2xTL-D18W HFS
TMS022 2xTL-D58W HFS
TMS022 2xTL-D36W HFS

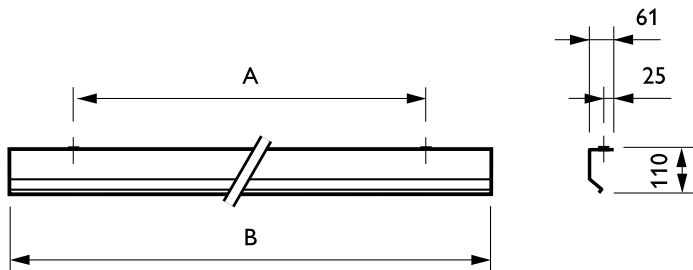
Lineco TMS022

Dimensional drawing



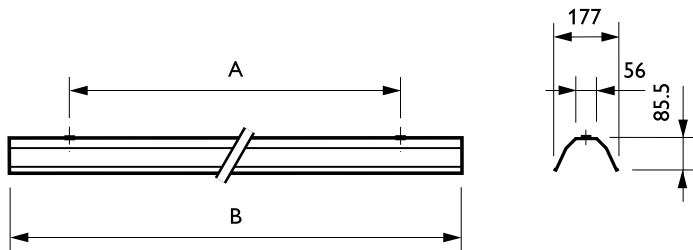
Product

GMS022 1/2 36 C
GMS022 1/2 58 C



Product

GMS022 1 18 R-A
GMS022 1 58 R-A
GMS022 1 36 R-A



Product

GMS022 1/2 58 R
GMS022 1/2 36 R
GMS022 1/2 18 R

Accessories

White reflector

Ordercode 910400620418,
910400620518, 910400620618



TMS022/UK with GMS022 R-A/UK
white asymmetric reflector (front
fix)

Ordercode 910400620718,
910400620818, 910400620918



Lineco TMS022

Accessories



Lineco TMS022 batten for 2x TL-D
fluorescent lamps with GMS022
high-gloss reflector

Ordercode 910402200003,
910402204803

Approval and Application

Mech. impact protection code	IK02
Ingress protection code	IP20

Operating and Electrical

Input Voltage	230 to 240 V
---------------	--------------

General Information

CE mark	CE mark
Protection class IEC	Safety class I (I)
Emergency lighting	No
ENEC mark	ENEC mark
Flammability mark	F
Glow-wire test	650/5
Lamp family code	TL-D
Optic type	No
Product Family Code	TMS022

General Information (1/2)

Order Code	Full Product Name	Compensation circuit	Country		
			version	Gear	Kombipack
11870399	TMS022 1xTL-D18W HFS	-	NO	HFS	-
11706500	TMS022 1xTL-D58W/840 HFRUK	-	UK	HFR	Lamp(s) included
13556499	TMS022 1xTL-D36W HFS	-	NO	HFS	-
13558899	TMS022 1xTL-D58W HFS	-	NO	HFS	-
04699899	TMS022 1xTL-D30W HFS	-	NO	HFS	-
04531199	TMS022 1xTL-D36W HF	Inductive parallel compensated	NO	HF	-
04533599	TMS022 1xTL-D58W HF	-	NO	HF	-
04537399	TMS022 1xTL-D18W HF	-	NO	HF	-
04539799	TMS022 1xTL-D30W HF	-	NO	HF	-
13560199	TMS022 2xTL-D36W HFS	-	NO	HFS	-
13562599	TMS022 2xTL-D58W HFS	-	NO	HFS	-
04698199	TMS022 2xTL-D18W HFS	-	NO	HFS	-
04532899	TMS022 2xTL-D36W HF	-	NO	HF	-
04534299	TMS022 2xTL-D58W HF	-	NO	HF	-
04535999	TMS022 2xTL-D36W HF SH	-	NO	HF	-
04536699	TMS022 2xTL-D58W HF SH	-	NO	HF	-
04538099	TMS022 2xTL-D18W HF	-	NO	HF	-

General Information (2/2)

Order Code	Full Product Name	Lamp power	Number of light sources	Order Code	Full Product Name	Lamp power	Number of light sources
11870399	TMS022 1xTL-D18W HFS	18 W	1	13560199	TMS022 2xTL-D36W HFS	36 W	2
11706500	TMS022 1xTL-D58W/840 HFRUK	58 W	1	13562599	TMS022 2xTL-D58W HFS	58 W	2
13556499	TMS022 1xTL-D36W HFS	36 W	1	04698199	TMS022 2xTL-D18W HFS	18 W	2
13558899	TMS022 1xTL-D58W HFS	58 W	1	04532899	TMS022 2xTL-D36W HF	36 W	2
04699899	TMS022 1xTL-D30W HFS	30 W	1	04534299	TMS022 2xTL-D58W HF	58 W	2
04531199	TMS022 1xTL-D36W HF	36 W	1	04535999	TMS022 2xTL-D36W HF SH	36 W	2
04533599	TMS022 1xTL-D58W HF	58 W	1	04536699	TMS022 2xTL-D58W HF SH	58 W	2
04537399	TMS022 1xTL-D18W HF	18 W	1	04538099	TMS022 2xTL-D18W HF	18 W	2
04539799	TMS022 1xTL-D30W HF	30 W	1				

