



# The smart choice for maximum flexibility

## SmartMate

Offering maximum versatility, the Philips Advance family of SmartMate ballasts for 4-pin compact fluorescent lamps drive a broad range of quad and triple-tube, circline, 2D, and long twin-tube lamps. SmartMate ballasts' energy efficient design, compact and lightweight housing, and user-friendly features make these ballasts an ideal choice for fixture manufacturers, retrofitters, and MRO replacement.

### Benefits

- Reduces SKU requirements and inventory costs
- Enhances wiring accuracy and ease of assembly/installation
- Eliminates interference with infrared systems, anti-theft devices, or other electronic equipment

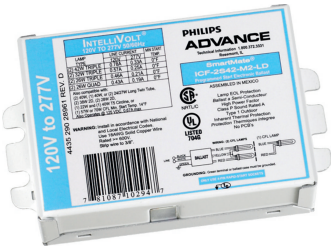
### Features

- IntelliVolt (120-277V) input voltage range
- 1 or 2 Lamp operation
- Color-coded connectors
- Operates multiple lamp wattages

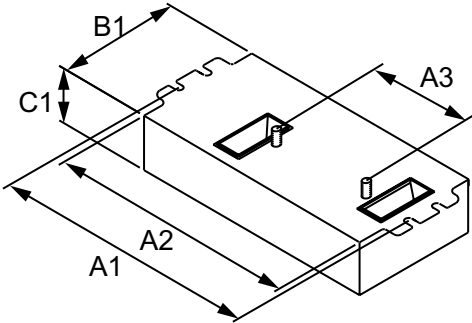
### Application

- Restaurants, reception areas, conference and meeting rooms, hotel and convention center ballrooms, or when combined with CFL lamps, as an energy efficient replacement for incandescent down-lighting systems

Versions



Dimensional drawing



Product	A1	A2	A3	B1	C1
SMARTMATE ICF2S13H1LD35M	4.60 in	4.20 in	2.00 in	2.40 in	0.98 in
SMARTMATE ICF2S26H1LD35M	4.60 in	4.20 in	2.00 in	2.40 in	0.98 in
SMARTMATE ICF2S18H1LD35M					

Operating and Electrical	
Input Frequency	50 to 60 Hz
Input Voltage	120 to 277 V
Total Harmonic Distortion USA	10 %
General Information	
Number Of Lamps	1/2 piece/unit
Mechanical and Housing	
Housing	H1

General Information

Order Code	Full Product Name	Lamp Type
10289330	SMARTMATE ELE BALLAST (2) 26W CFL (4-PIN) 120-277V	CFQ26W/G24Q

Order Code	Full Product Name	Lamp Type
		CFQ13W/G24Q

