



# The smart choice for maximum flexibility

## SmartMate

Offering maximum versatility, the Philips Advance family of SmartMate ballasts for 4-pin compact fluorescent lamps drive a broad range of quad and triple-tube, circline, 2D, and long twin-tube lamps. SmartMate ballasts' energy efficient design, compact and lightweight housing, and user-friendly features make these ballasts an ideal choice for fixture manufacturers, retrofitters, and MRO replacement.

### Benefits

- Reduces SKU requirements and inventory costs
- Enhances wiring accuracy and ease of assembly/installation
- Eliminates interference with infrared systems, anti-theft devices, or other electronic equipment

### Features

- IntelliVolt (120-277V) input voltage range
- 1 or 2 Lamp operation
- Color-coded connectors
- Operates multiple lamp wattages

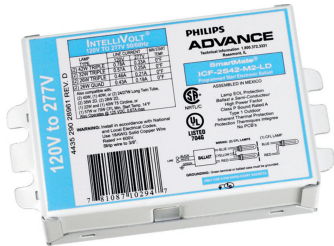
### Application

- Restaurants, reception areas, conference and meeting rooms, hotel and convention center ballrooms, or when combined with CFL lamps, as an energy efficient replacement for incandescent down-lighting systems

Versions



ICF2S13H1LDK

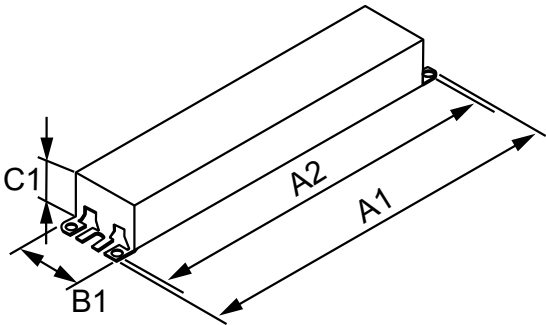
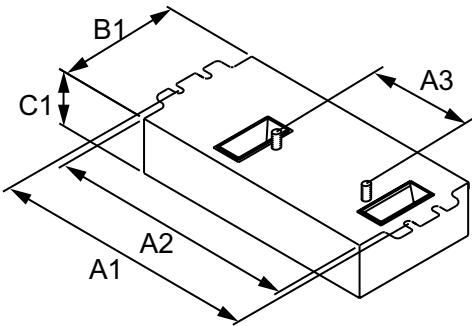


ICF2S42M2LD45M



ICN3TTP40SC35I

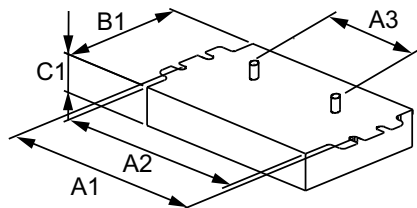
Dimensional drawing



Product						
SMARTMATE ELE BALLAST (2) 18W						
CFL (4-PIN) 120-277V						
SMARTMATE ELE BAL (2) 13W CFL (4-PIN) 120-277V KIT	4.60 in	4.20 in	2.00 in	3.00 in	1.29 in	
SMARTMATE ELE BALLAST (2) 26W CFL (4-PIN) 120-277V	4.60 in	4.20 in	2.00 in	2.40 in	0.98 in	
SMARTMATE ELE BALLAST (2) 13W CFL (4-PIN) 120-277V	4.60 in	4.20 in	2.00 in	2.40 in	0.98 in	
SMARTMATE ELE BALLAST (2) 26W CFL (4-PIN) 120-277V	4.60 in	4.20 in	2.00 in	2.40 in	0.98 in	
SMARTMATE ELE BALLAST (2) 18W CFL (4-PIN) 120-277V	4.60 in	4.20 in	2.00 in	2.40 in	0.98 in	
SMARTMATE ELE BALLAST (2) 13W CFL (4-PIN) 120-277V	4.60 in	4.20 in	2.00 in	2.40 in	0.98 in	
SMARTMATE ELE BALLAST (2) 26W CFL (4-PIN) 120-277V	4.60 in	4.20 in	2.00 in	2.40 in	0.98 in	
SMARTMATE ELE BAL (2) 26W CFL (4-PIN) 120-277V KIT	4.60 in	4.20 in	2.00 in	2.40 in	0.98 in	
SMARTMATE ELE BAL (2) 18W CFL (4-PIN) 120-277V KIT	4.60 in	4.20 in	2.00 in	3.00 in	1.29 in	

Product	A1	A2	B1	C1
SMARTMATE ELE BALLAST (2) 40W CFL (4-PIN) 120-277V	9.5 in	8.90 in	1.7 in	1.18 in
SMARTMATE ELE BALLAST (2) 40W CFL (4-PIN) 120-277V	9.5 in	8.90 in	1.7 in	1.18 in
SMARTMATE ELE BALLAST (3) 40W CFL (4-PIN) 120-277V	9.5 in	8.90 in	1.7 in	1.18 in
SMARTMATE ELE BALLAST (3) 40W CFL (4-PIN) 120-277V	9.5 in	8.90 in	1.7 in	1.18 in
SMARTMATE ELE BALLAST (1) 40W CFL (4-PIN) 120-277V	9.5 in	8.90 in	1.7 in	1.18 in

## Dimensional drawing



Studs for -BS models only  
-LD models do not have  
mounting studs

### Operating and Electrical

Input Frequency	50 to 60 Hz
Input Voltage	120 to 277 V
Total Harmonic Distortion USA	10 %

Product	A1	A2	A3	B1	C1
SMARTMATE ELE BALLAST (2) 42W CFL (4-PIN) 120-277V	4.55 in	4.20 in	2.00 in	3.00 in	1.29 in
SMARTMATE ELE BAL (2) 42W CFL (4-PIN) 120/277V KIT	4.55 in	4.20 in	2.00 in	3.00 in	1.29 in
SMARTMATE ELE BALLAST (2) 42W CFL (4-PIN) 120-277V	4.55 in	4.20 in	2.00 in	3.00 in	1.29 in
SMARTMATE ELE BALLAST (2) 42W CFL (4-PIN) 120-277V	4.55 in	4.20 in	2.00 in	3.00 in	1.29 in

## General Information

Order Code	Full Product Name	Number Of	
		Lamps	Lamp Type
ICF2S13H1LDK	SMARTMATE ELE BAL (2) 13W CFL (4-PIN) 120-277V KIT	1/2 piece/unit	CFQ13W/ G24Q
ICF2S18H1LDK	SMARTMATE ELE BAL (2) 18W CFL (4-PIN) 120-277V KIT	1/2 piece/unit	CFQ18W/ G24Q
ICF2S26H1LDK	SMARTMATE ELE BAL (2) 26W CFL (4-PIN) 120-277V KIT	1/2 piece/unit	CFQ26W/ G24Q
ICF2S42M2LDK	SMARTMATE ELE BAL (2) 42W CFL (4-PIN) 120-277V KIT	1/2 piece/unit	CFTR42W/ GX24Q
ICF2S42M2LD35M	SMARTMATE ELE BALLAST (2) 42W CFL (4-PIN) 120-277V	1/2 piece/unit	CFTR42W/ GX24Q
ICF2S18H1LD35M	SMARTMATE ELE BALLAST (2) 18W CFL (4-PIN) 120-277V	1/2 piece/unit	-
ICF2S26H1LD35M	SMARTMATE ELE BALLAST (2) 26W CFL (4-PIN) 120-277V	1/2 piece/unit	CFQ26W/ G24Q
ICF2S42M2BS35M	SMARTMATE ELE BALLAST (2) 42W CFL (4-PIN) 120-277V	1/2 piece/unit	CFTR42W/ GX24Q
ICF2S13M1BS35M	SMARTMATE ELE BALLAST (2) 13W CFL (4-PIN) 120-277V	1/2 piece/unit	CFQ13W/ G24Q
ICF2S18M1BS35M	SMARTMATE ELE BALLAST (2) 18W CFL (4-PIN) 120-277V	1/2 piece/unit	CFQ18W/ G24Q

Order Code	Full Product Name	Number Of	
		Lamps	Lamp Type
ICF2S26M1BS35M	SMARTMATE ELE BALLAST (2) 26W CFL (4-PIN) 120-277V	1/2 piece/unit	CFQ26W/ G24Q
ICF2S13H1LD35M	SMARTMATE ELE BALLAST (2) 13W CFL (4-PIN) 120-277V	1/2 piece/unit	CFQ13W/ G24Q
ICF2S4290CM2LD35M	SMARTMATE ELE BALLAST (2) 42W CFL (4-PIN) 120-277V	1/2 piece/unit	CFTR42W/ GX24Q
ICF2S26M1BSQS35M	SMARTMATE ELE BALLAST (2) 26W CFL (4-PIN) 120-277V	1/2 piece/unit	CFQ26W/ G24Q
ICN3TTP40SC35I	SMARTMATE ELE BALLAST (3) 40W CFL (4-PIN) 120-277V	2/3 piece/unit	FT40W/2G11
ICN3TTP40SC35M	SMARTMATE ELE BALLAST (3) 40W CFL (4-PIN) 120-277V	2/3 piece/unit	FT40W/2G11
ICN2TTP40SC35I	SMARTMATE ELE BALLAST (2) 40W CFL (4-PIN) 120-277V	1/2 piece/unit	FT40W/2G11
ICN2TTP40SC35M	SMARTMATE ELE BALLAST (2) 40W CFL (4-PIN) 120-277V	1/2 piece/unit	FT40W/2G11
ICN1TTP40SC35M	SMARTMATE ELE BALLAST (1) 40W CFL (4-PIN) 120-277V	1 piece/unit	FT40W/2G11

## Mechanical and Housing

Order Code	Full Product Name	Housing
ICF2S13H1LDK	SMARTMATE ELE BAL (2) 13W CFL (4-PIN) 120-277V KIT	H1
ICF2S18H1LDK	SMARTMATE ELE BAL (2) 18W CFL (4-PIN) 120-277V KIT	H1

Order Code	Full Product Name	Housing
ICF2S26H1LDK	SMARTMATE ELE BAL (2) 26W CFL (4-PIN) 120-277V KIT	H1
ICF2S42M2LDK	SMARTMATE ELE BAL (2) 42W CFL (4-PIN) 120/277V KIT	M2

Order Code	Full Product Name	Housing
ICF2S42M2LD35M	SMARTMATE ELE BALLAST (2) 42W CFL (4-PIN) 120-277V	M2
ICF2S18H1LD35M	SMARTMATE ELE BALLAST (2) 18W CFL (4-PIN) 120-277V	H1
ICF2S26H1LD35M	SMARTMATE ELE BALLAST (2) 26W CFL (4-PIN) 120-277V	H1
ICF2S42M2BS35M	SMARTMATE ELE BALLAST (2) 42W CFL (4-PIN) 120-277V	M2
ICF2S13M1BS35M	SMARTMATE ELE BALLAST (2) 13W CFL (4-PIN) 120-277V	H1
ICF2S18M1BS35M	SMARTMATE ELE BALLAST (2) 18W CFL (4-PIN) 120-277V	M1
ICF2S26M1BS35M	SMARTMATE ELE BALLAST (2) 26W CFL (4-PIN) 120-277V	M1
ICF2S13H1LD35M	SMARTMATE ELE BALLAST (2) 13W CFL (4-PIN) 120-277V	H1

Order Code	Full Product Name	Housing
ICF2S4290CM2LD35M	SMARTMATE ELE BALLAST (2) 42W CFL (4-PIN) 120-277V	M2
ICF2S26M1BSQS35M	SMARTMATE ELE BALLAST (2) 26W CFL (4-PIN) 120-277V	M1
ICN3TTP40SC35I	SMARTMATE ELE BALLAST (3) 40W CFL (4-PIN) 120-277V	SC
ICN3TTP40SC35M	SMARTMATE ELE BALLAST (3) 40W CFL (4-PIN) 120-277V	SC
ICN2TTP40SC35I	SMARTMATE ELE BALLAST (2) 40W CFL (4-PIN) 120-277V	SC
ICN2TTP40SC35M	SMARTMATE ELE BALLAST (2) 40W CFL (4-PIN) 120-277V	SC
ICN1TTP40SC35M	SMARTMATE ELE BALLAST (1) 40W CFL (4-PIN) 120-277V	SC

