



The smart choice for maximum flexibility

SmartMate

Offering maximum versatility, the Philips Advance family of SmartMate ballasts for 4-pin compact fluorescent lamps drive a broad range of quad and triple-tube, circline, 2D, and long twin-tube lamps. SmartMate ballasts' energy efficient design, compact and lightweight housing, and user-friendly features make these ballasts an ideal choice for fixture manufacturers, retrofitters, and MRO replacement.

Benefits

- Reduces SKU requirements and inventory costs
- Enhances wiring accuracy and ease of assembly/installation
- Eliminates interference with infrared systems, anti-theft devices, or other electronic equipment

Features

- IntelliVolt (120-277V) input voltage range
- 1 or 2 Lamp operation
- Color-coded connectors
- Operates multiple lamp wattages

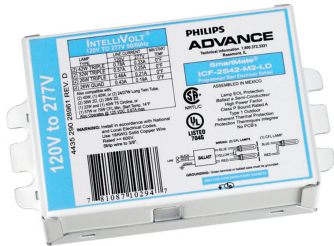
Application

- Restaurants, reception areas, conference and meeting rooms, hotel and convention center ballrooms, or when combined with CFL lamps, as an energy efficient replacement for incandescent down-lighting systems

Versions



ICF2S13H1LDK

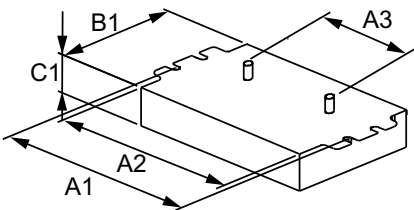
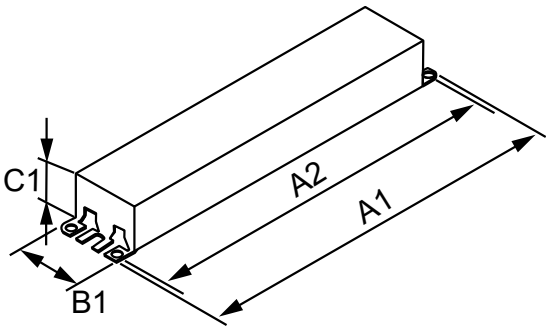
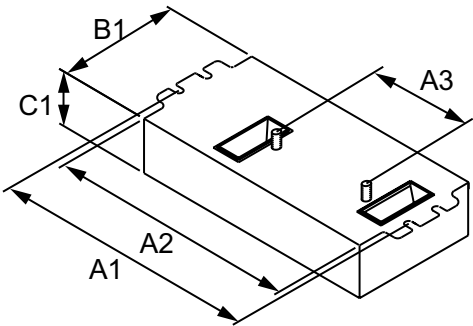


ICF2S42M2LD45M



ICN3TTP40SC35I

Dimensional drawing



Studs for -BS models only
-LD models do not have
mounting studs

| Product | | | | | |
|----------------------------|---------|---------|---------|---------|---------|
| SMARTMATE ICF2S18H1LD35M | | | | | |
| SMARTMATE ICF2S26M1BSQS35M | 4.60 in | 4.20 in | 2.00 in | 2.40 in | 0.98 in |
| SMARTMATE ICF2S13H1LD35M | 4.60 in | 4.20 in | 2.00 in | 2.40 in | 0.98 in |
| SMARTMATE ICF2S26M1BS35M | 4.60 in | 4.20 in | 2.00 in | 2.40 in | 0.98 in |
| SMARTMATE ICF2S18M1BS35M | 4.60 in | 4.20 in | 2.00 in | 2.40 in | 0.98 in |
| SMARTMATE ICF2S13M1BS35M | 4.60 in | 4.20 in | 2.00 in | 2.40 in | 0.98 in |
| SMARTMATE ICF2S26H1LD35M | 4.60 in | 4.20 in | 2.00 in | 2.40 in | 0.98 in |
| SMARTMATE ICF2S26H1LDK | 4.60 in | 4.20 in | 2.00 in | 2.40 in | 0.98 in |
| SMARTMATE ICF2S18H1LDK | 4.60 in | 4.20 in | 2.00 in | 3.00 in | 1.29 in |
| SMARTMATE ICF2S13H1LDK | 4.60 in | 4.20 in | 2.00 in | 3.00 in | 1.29 in |

| Product | A1 | A2 | B1 | C1 |
|--------------------------|--------|---------|--------|---------|
| SMARTMATE ICN1TTP40SC35M | 9.5 in | 8.90 in | 1.7 in | 1.18 in |
| SMARTMATE ICN2TTP40SC35M | 9.5 in | 8.90 in | 1.7 in | 1.18 in |
| SMARTMATE ICN2TTP40SC35I | 9.5 in | 8.90 in | 1.7 in | 1.18 in |
| SMARTMATE ICN3TTP40SC35M | 9.5 in | 8.90 in | 1.7 in | 1.18 in |
| SMARTMATE ICN3TTP40SC35I | 9.5 in | 8.90 in | 1.7 in | 1.18 in |

| Product | A1 | A2 | A3 | B1 | C1 |
|-----------------------------|---------|---------|---------|---------|---------|
| SMARTMATE ICF2S4290CM2LD35M | 4.55 in | 4.20 in | 2.00 in | 3.00 in | 1.29 in |
| SMARTMATE ICF2S42M2LDK | 4.55 in | 4.20 in | 2.00 in | 3.00 in | 1.29 in |
| SMARTMATE ICF2S42M2BS35M | 4.55 in | 4.20 in | 2.00 in | 3.00 in | 1.29 in |
| SMARTMATE ICF2S42M2LD35M | 4.55 in | 4.20 in | 2.00 in | 3.00 in | 1.29 in |

Operating and Electrical

| | |
|-------------------------------|--------------|
| Input Frequency | 50 to 60 Hz |
| Input Voltage | 120 to 277 V |
| Total Harmonic Distortion USA | 10 % |

General Information

| Order Code | Full Product Name | Number Of Lamps | Lamp Type |
|--------------|--|-----------------|-------------------|
| 913700500811 | SMARTMATE ELE BAL (2) 13W CFL (4-PIN) 120-277V KIT | 1/2 piece/unit | CFQ13W/G24Q |
| 913700500821 | SMARTMATE ELE BAL (2) 18W CFL (4-PIN) 120-277V KIT | 1/2 piece/unit | CFQ18W/G24Q |
| 913700500831 | SMARTMATE ELE BAL (2) 26W CFL (4-PIN) 120-277V KIT | 1/2 piece/unit | CFQ26W/G24Q |
| 913710209004 | SMARTMATE ELE BAL (2) 42W CFL (4-PIN) 120/277V KIT | 1/2 piece/unit | CFTR42W/ GX24Q |
| 913700508491 | SMARTMATE ELE BALLAST (2) 42W CFL (4-PIN) 120-277V | 1/2 piece/unit | CFTR42W/ GX24Q |
| 913700508951 | SMARTMATE ELE BALLAST (2) 18W CFL (4-PIN) 120-277V | 1/2 piece/unit | - |
| 913700508961 | SMARTMATE ELE BALLAST (2) 26W CFL (4-PIN) 120-277V | 1/2 piece/unit | CFQ26W/G24Q |
| 913700521201 | SMARTMATE ELE BALLAST (2) 42W CFL (4-PIN) 120-277V | 1/2 piece/unit | CFTR42W/ GX24Q |
| 913700532201 | SMARTMATE ELE BALLAST (2) 13W CFL (4-PIN) 120-277V | 1/2 piece/unit | CFQ13W/G24Q |
| 913700532301 | SMARTMATE ELE BALLAST (2) 18W CFL (4-PIN) 120-277V | 1/2 piece/unit | CFQ18W/G24Q |

| Order Code | Full Product Name | Number Of Lamps | Lamp Type |
|--------------|--|-----------------|-------------------|
| 913700532401 | SMARTMATE ELE BALLAST (2) 26W CFL (4-PIN) 120-277V | 1/2 piece/unit | CFQ26W/G24Q |
| 913710207502 | SMARTMATE ELE BALLAST (2) 13W CFL (4-PIN) 120-277V | 1/2 piece/unit | CFQ13W/G24Q |
| 913710262302 | SMARTMATE ELE BALLAST (2) 42W CFL (4-PIN) 120-277V | 1/2 piece/unit | CFTR42W/ GX24Q |
| 913710817302 | SMARTMATE ELE BALLAST (2) 26W CFL (4-PIN) 120-277V | 1/2 piece/unit | CFQ26W/G24Q |
| 913710835401 | SMARTMATE ELE BALLAST (3) 40W CFL (4-PIN) 120-277V | 2/3 piece/unit | FT40W/2G11 |
| 913710835402 | SMARTMATE ELE BALLAST (3) 40W CFL (4-PIN) 120-277V | 2/3 piece/unit | FT40W/2G11 |
| 913710835501 | SMARTMATE ELE BALLAST (2) 40W CFL (4-PIN) 120-277V | 1/2 piece/unit | FT40W/2G11 |
| 913710835502 | SMARTMATE ELE BALLAST (2) 40W CFL (4-PIN) 120-277V | 1/2 piece/unit | FT40W/2G11 |
| 913710835602 | SMARTMATE ELE BALLAST (1) 40W CFL (4-PIN) 120-277V | 1 piece/unit | FT40W/2G11 |

Mechanical and Housing

| Order Code | Full Product Name | Housing |
|--------------|--|---------|
| 913700500811 | SMARTMATE ELE BAL (2) 13W CFL (4-PIN) 120-277V KIT | H1 |
| 913700500821 | SMARTMATE ELE BAL (2) 18W CFL (4-PIN) 120-277V KIT | H1 |
| 913700500831 | SMARTMATE ELE BAL (2) 26W CFL (4-PIN) 120-277V KIT | H1 |
| 913710209004 | SMARTMATE ELE BAL (2) 42W CFL (4-PIN) 120/277V KIT | M2 |
| 913700508491 | SMARTMATE ELE BALLAST (2) 42W CFL (4-PIN) 120-277V | M2 |
| 913700508951 | SMARTMATE ELE BALLAST (2) 18W CFL (4-PIN) 120-277V | H1 |
| 913700508961 | SMARTMATE ELE BALLAST (2) 26W CFL (4-PIN) 120-277V | H1 |
| 913700521201 | SMARTMATE ELE BALLAST (2) 42W CFL (4-PIN) 120-277V | M2 |
| 913700532201 | SMARTMATE ELE BALLAST (2) 13W CFL (4-PIN) 120-277V | H1 |
| 913700532301 | SMARTMATE ELE BALLAST (2) 18W CFL (4-PIN) 120-277V | M1 |

| Order Code | Full Product Name | Housing |
|--------------|--|---------|
| 913700532401 | SMARTMATE ELE BALLAST (2) 26W CFL (4-PIN) 120-277V | M1 |
| 913710207502 | SMARTMATE ELE BALLAST (2) 13W CFL (4-PIN) 120-277V | H1 |
| 913710262302 | SMARTMATE ELE BALLAST (2) 42W CFL (4-PIN) 120-277V | M2 |
| 913710817302 | SMARTMATE ELE BALLAST (2) 26W CFL (4-PIN) 120-277V | M1 |
| 913710835401 | SMARTMATE ELE BALLAST (3) 40W CFL (4-PIN) 120-277V | SC |
| 913710835402 | SMARTMATE ELE BALLAST (3) 40W CFL (4-PIN) 120-277V | SC |
| 913710835501 | SMARTMATE ELE BALLAST (2) 40W CFL (4-PIN) 120-277V | SC |
| 913710835502 | SMARTMATE ELE BALLAST (2) 40W CFL (4-PIN) 120-277V | SC |
| 913710835602 | SMARTMATE ELE BALLAST (1) 40W CFL (4-PIN) 120-277V | SC |

