



A new age in outdoor urban lighting

Cosmopolis Xtreme Fixed Output Ballast

The Philips CosmoPolis system brings high efficiency white light to outdoor lighting in traditional high pressure sodium applications. The optimized electronic ballast with integral surge protection provides long service life and maximizes the lamp performance.

Benefits

- Compact system for optical and energy efficiency
- High quality white light
- Dependable service for long life and minimal cost of ownership

Features

- Integral 10kV transient protection
- IntelliVolt 208–277V or 120V input
- Rugged polymeric case with integral wire connector
- 80,000hr average rate life

Application

- Street and area lighting in urban areas, college campuses, pedestrian malls

Cosmopolis Xtreme Fixed Output Ballast

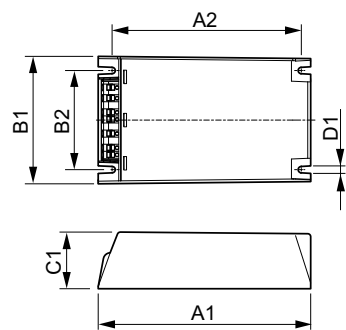
Versions



HID-PV Xt 90 CPO Q

HID-PV Xt 140 CPO Q

Dimensional drawing



Product	D1	C1	A1	A2	B1	B2
COSMOPOLIS ELE MH	4.5	40.0	150.0	133.6	90.0	70.0
BAL FLT 140W CPO-TW	mm	mm	mm	mm	mm	mm
208-277V						
COSMOPOLIS ELE MH	4.5	40.0	150.0	133.6	90.0	70.0
BAL FLT 90W CPO-TW	mm	mm	mm	mm	mm	mm
208-277V 50/60						



Cosmopolis Xtreme Fixed Output Ballast

Controls and Dimming

Regulating Level	-
------------------	---

Operating and Electrical

Input Frequency	50 to 60 Hz
Input Voltage	208-240-277 V

General Information

Number Of Products On MCB (16A Type B) (Nom)	5
Number Of Lamps	1 piece/unit
Lamp Type	CPO

Mechanical and Housing

Housing	Q
---------	---

System characteristics

Order Code	Full Product Name	Lamp Power On CPO	Rated Ballast- Lamp Power
ICW90QLSM	COSMOPOLIS ELE MH BAL FLT 90W CPO-TW 208-277V 50/60	90 W	90 W

Order Code	Full Product Name	Lamp Power On CPO	Rated Ballast- Lamp Power
ICW140QLSM	COSMOPOLIS ELE MH BAL FLT 140W CPO-TW 208-277V	140 W	140 W

