



CoreLine Wall-mounted – the clear choice for LED

CoreLine Wall-mounted

Whether for a new building or renovation of an existing space, customers want lighting solutions that provide quality of light and substantial energy and maintenance savings. The new CoreLine Wall-mounted range of LED products can be used to replace traditional wall-mounted luminaires incorporating compact fluorescent lamps. The process of selecting, installing and maintaining is so easy – it's a simple switch.

Benefits

- Up to 55% energy savings compared with luminaires with PL-C lamps
- Up to 55% energy savings compared with luminaires with PL-C lamps
- Direct replacement for traditional wall-mounted luminaires
- Direct replacement for traditional wall-mounted luminaires
- Complete range covering all application requirements in one product (light levels, IP65, IK10, certified emergency lighting, built-in controls)
- Complete range covering all application requirements in one product (light levels, IP65, IK10, certified emergency lighting, built-in controls)

CoreLine Wall-mounted

Features

- Unobtrusive design
- Unobtrusive design
- Three lumen packages replacing traditional wall-mounted luminaires with 1x18 W / 2x18 W / 2x26 W PL-C
- Three lumen packages replacing traditional wall-mounted luminaires with 1x18 W / 2x18 W / 2x26 W PL-C
- Water- and vandal-proof as standard
- Water- and vandal-proof as standard
- Phase-cut dimming as standard
- Phase-cut dimming as standard
- Frosted diffuser ensuring homogeneous light effect and visual comfort
- Frosted diffuser ensuring homogeneous light effect and visual comfort
- Optional emergency lighting
- Optional emergency lighting
- Optional on/off movement detection or programmed 100%-10%-0% corridor dimming functionality
- Optional on/off movement detection or programmed 100%-10%-0% corridor dimming functionality

Application

- Corridors
- Corridors
- Staircases
- Staircases
- Public entrance areas
- Public entrance areas
- Bathrooms
- Bathrooms
- Emergency exits
- Emergency exits
- Parking garages
- Parking garages
- Outdoor safety lighting
- Outdoor safety lighting

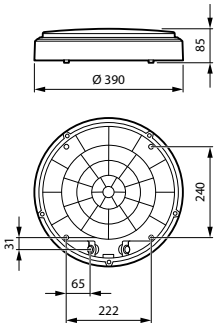
Versions



CoreLine wall-mounted WL140V All-in

CoreLine Wall-mounted

Dimensional drawing



Product details



CoreLine Wall-mounted WL140V
Rim Black



CoreLine Wall-mounted WL140V
Rim Grey



CoreLine Wall-mounted WL140V
Wall-mounted Black



CoreLine Wall-mounted WL140V
Wall-mounted PSU



CoreLine Wall-mounted WL140V
Ceiling-mounted Grey



CoreLine Wall-mounted WL140V
Ceiling-mounted Black

CoreLine Wall-mounted

Product details



CoreLine Wall-mounted WL140V
Wall-mounted White with Half-
moon Accessory



CoreLine Wall-mounted WL140V
Wall-mounted Grey with Half-
moon Accessory



Coreline Wall-mounted WL140V
Top View (with screw locations)



CoreLine Wall-mounted WL140V
Wall-mounted Switchable Lumen
& CCT



CoreLine Wall-mounted WL140V
Half-moon Accessory Black



CoreLine Wall-mounted WL140V
Half-moon Accessory Grey



CoreLine Wall-mounted WL140V
Ceiling-mounted



CoreLine Wall-mounted WL140V
Wall-mounted PSR MDU

CoreLine Wall-mounted

Product details



CoreLine Wall-mounted WL140V
Wall-mounted Grey



CoreLine Wall-mounted WL140V
Half-moon Accessory White



Coreline Wall-mounted WL140V
Top View

CoreLine Wall-mounted

General Information	
CE mark	Yes
Driver included	Yes
ENEC mark	ENEC mark
Flammability mark	-
Glow-wire test	Temperature 850 °C, duration 30 s
Light source replaceable	Yes
Number of gear units	1 unit
Light Technical	
Beam angle of light source	120 degree(s)
Color rendering index (CRI)	>80
Optic type	Symmetrical
Flickering value (PstLM) - Flickering value as per EN 61000-3-3	1
Stroboscopic effect visibility measure (SVM)	1.6
Operating and Electrical	
Input Voltage	220-240 V
Line Frequency	50 or 60 Hz
Temperature	
Ambient temperature range	-20 to +40 °C
Mechanical and Housing	
Housing Color	White
Approval and Application	
Protection class IEC	Safety class II
Mech. impact protection code	IK10
Ingress protection code	IP65
Initial Performance (IEC Compliant)	
Luminous flux tolerance	+/-10%
Application Conditions	
Suitable for random switching	No

General Information

Order Code	Full Product Name	Embedded control
911401848182	WL140V LED12_20S/827_830_840 PSU WH	-
911401848282	WL140V LED20_34S/827_830_840 PSU WH	-
911401847382	WL140V LED12S/830 PSU WH	-
911401847482	WL140V LED12S/840 PSU WH	-
911401847582	WL140V LED20S/830 PSU WH	-
911401847682	WL140V LED20S/840 PSU WH	-
911401847782	WL140V LED34S/830 PSU WH	-
911401847882	WL140V LED34S/840 PSU WH	-
911401847982	WL140V LED20S/830 PSU MDU WH	Programmable movement and light sensor
911401848082	WL140V LED20S/840 PSU MDU WH	Programmable movement and light sensor
911401851582	WL140V LED12S/830 PSR MDU WH	Programmable movement and light sensor with wireless grouping
911401851682	WL140V LED12S/840 PSR MDU WH	Programmable movement and light sensor with wireless grouping
911401851782	WL140V LED20S/830 PSR MDU WH	Programmable movement and light sensor with wireless grouping
911401851882	WL140V LED20S/840 PSR MDU WH	Programmable movement and light sensor with wireless grouping
911401851982	WL140V LED34S/830 PSR MDU WH	Programmable movement and light sensor with wireless grouping
911401852082	WL140V LED34S/840 PSR MDU WH	Programmable movement and light sensor with wireless grouping

Light Technical

			Correlated Color Temperature	Luminous Efficacy (rated)	Luminous Flux
Order Code	Full Product Name	"All-in" Type	(Nom)	(Nom)	
911401848182	WL140V LED12_20S/827_830_840 PSU WH	"All-in" Multi Lumen and Multi Color Temperature	2700 K	100 lm/W	1,200 lm
911401848282	WL140V LED20_34S/	"All-in" Multi Lumen and	2700 K	100 lm/W	2,000 lm

			Correlated Color Temperature	Luminous Efficacy (rated)	Luminous Flux
Order Code	Full Product Name	"All-in" Type	(Nom)	(Nom)	
	827_830_840 PSU WH	Multi Color Temperature			
911401847382	WL140V LED12S/830 PSU WH	-	3000 K	105 lm/W	1,275 lm

CoreLine Wall-mounted

Order Code	Full Product		Correlated Color Temperature (Nom)	Luminous Efficacy (rated) (Nom)	Luminous Flux
	Name	"All-in" Type			
911401847482	WL140V LED12S/840 PSU WH	-	4000 K	110 lm/W	1,350 lm
911401847582	WL140V LED20S/830 PSU WH	-	3000 K	105 lm/W	2,100 lm
911401847682	WL140V LED20S/840 PSU WH	-	4000 K	110 lm/W	2,200 lm
911401847782	WL140V LED34S/830 PSU WH	-	3000 K	105 lm/W	3,400 lm
911401847882	WL140V LED34S/840 PSU WH	-	4000 K	110 lm/W	3,550 lm
911401847982	WL140V LED20S/830 PSU MDU WH	-	3000 K	95 lm/W	1,850 lm
911401848082	WL140V LED20S/840 PSU MDU WH	-	4000 K	100 lm/W	1,950 lm

Operating and Electrical

Order Code	Full Product Name	Power Consumption
911401848182	WL140V LED12_20S/827_830_840 PSU WH	20 W
911401848282	WL140V LED20_34S/827_830_840 PSU WH	33 W
911401847382	WL140V LED12S/830 PSU WH	12 W
911401847482	WL140V LED12S/840 PSU WH	12 W
911401847582	WL140V LED20S/830 PSU WH	20 W
911401847682	WL140V LED20S/840 PSU WH	20 W
911401847782	WL140V LED34S/830 PSU WH	32 W
911401847882	WL140V LED34S/840 PSU WH	32 W

Controls and Dimming

Order Code	Full Product Name	Dimmable
911401848182	WL140V LED12_20S/827_830_840 PSU WH	No
911401848282	WL140V LED20_34S/827_830_840 PSU WH	No
911401847382	WL140V LED12S/830 PSU WH	No
911401847482	WL140V LED12S/840 PSU WH	No
911401847582	WL140V LED20S/830 PSU WH	No
911401847682	WL140V LED20S/840 PSU WH	No
911401847782	WL140V LED34S/830 PSU WH	No
911401847882	WL140V LED34S/840 PSU WH	No

Initial Performance (IEC Compliant)

Order Code	Full Product		Correlated Color Temperature (Nom)	Luminous Efficacy (rated) (Nom)	Luminous Flux
	Name	"All-in" Type			
911401851582	WL140V LED12S/830 PSR MDU WH	-	3000 K	90 lm/W	1,200 lm
911401851682	WL140V LED12S/840 PSR MDU WH	-	4000 K	95 lm/W	1,250 lm
911401851782	WL140V LED20S/830 PSR MDU WH	-	3000 K	90 lm/W	2,100 lm
911401851882	WL140V LED20S/840 PSR MDU WH	-	4000 K	95 lm/W	2,200 lm
911401851982	WL140V LED34S/830 PSR MDU WH	-	3000 K	98 lm/W	2,950 lm
911401852082	WL140V LED34S/840 PSR MDU WH	-	4000 K	103 lm/W	3,100 lm

Order Code	Full Product Name	Power Consumption
911401847982	WL140V LED20S/830 PSU MDU WH	19 W
911401848082	WL140V LED20S/840 PSU MDU WH	19 W
911401851582	WL140V LED12S/830 PSR MDU WH	13 W
911401851682	WL140V LED12S/840 PSR MDU WH	13 W
911401851782	WL140V LED20S/830 PSR MDU WH	23 W
911401851882	WL140V LED20S/840 PSR MDU WH	23 W
911401851982	WL140V LED34S/830 PSR MDU WH	30 W
911401852082	WL140V LED34S/840 PSR MDU WH	30 W

Order Code	Full Product Name	Dimmable
911401847982	WL140V LED20S/830 PSU MDU WH	No
911401848082	WL140V LED20S/840 PSU MDU WH	No
911401851582	WL140V LED12S/830 PSR MDU WH	Yes
911401851682	WL140V LED12S/840 PSR MDU WH	Yes
911401851782	WL140V LED20S/830 PSR MDU WH	Yes
911401851882	WL140V LED20S/840 PSR MDU WH	Yes
911401851982	WL140V LED34S/830 PSR MDU WH	Yes
911401852082	WL140V LED34S/840 PSR MDU WH	Yes

CoreLine Wall-mounted

Order Code	Full Product Name	Initial chromaticity
911401848182	WL140V LED12_20S/827_830_840 PSU WH	(0.3818,0.3797) SDCM <5
911401848282	WL140V LED20_34S/827_830_840 PSU WH	(0.3818,0.3797) SDCM <5
911401847382	WL140V LED12S/830 PSU WH	(0.4338,0.4030) SDCM <3
911401847482	WL140V LED12S/840 PSU WH	(0.3818,0.3797) SDCM <3
911401847582	WL140V LED20S/830 PSU WH	(0.4338,0.4030) SDCM <3
911401847682	WL140V LED20S/840 PSU WH	(0.3818,0.3797) SDCM <3
911401847782	WL140V LED34S/830 PSU WH	(0.4338,0.4030) SDCM <3
911401847882	WL140V LED34S/840 PSU WH	(0.3818,0.3797) SDCM <3

Order Code	Full Product Name	Initial chromaticity
911401847982	WL140V LED20S/830 PSU MDU WH	(0.4338,0.4030) SDCM <3
911401848082	WL140V LED20S/840 PSU MDU WH	(0.3818,0.3797) SDCM <3
911401851582	WL140V LED12S/830 PSR MDU WH	(0.4338,0.4030) SDCM <3
911401851682	WL140V LED12S/840 PSR MDU WH	(0.3818,0.3797) SDCM <3
911401851782	WL140V LED20S/830 PSR MDU WH	(0.4338,0.4030) SDCM <3
911401851882	WL140V LED20S/840 PSR MDU WH	(0.3818,0.3797) SDCM <3
911401851982	WL140V LED34S/830 PSR MDU WH	(0.4338,0.4030) SDCM <3
911401852082	WL140V LED34S/840 PSR MDU WH	(0.3818,0.3797) SDCM <3

Application Conditions

Order Code	Full Product Name	Maximum dim level
911401848182	WL140V LED12_20S/827_830_840 PSU WH	Not applicable
911401848282	WL140V LED20_34S/827_830_840 PSU WH	Not applicable
911401847382	WL140V LED12S/830 PSU WH	Not applicable
911401847482	WL140V LED12S/840 PSU WH	Not applicable
911401847582	WL140V LED20S/830 PSU WH	Not applicable
911401847682	WL140V LED20S/840 PSU WH	Not applicable
911401847782	WL140V LED34S/830 PSU WH	Not applicable
911401847882	WL140V LED34S/840 PSU WH	Not applicable

Order Code	Full Product Name	Maximum dim level
911401847982	WL140V LED20S/830 PSU MDU WH	Not applicable
911401848082	WL140V LED20S/840 PSU MDU WH	Not applicable
911401851582	WL140V LED12S/830 PSR MDU WH	10%
911401851682	WL140V LED12S/840 PSR MDU WH	10%
911401851782	WL140V LED20S/830 PSR MDU WH	10%
911401851882	WL140V LED20S/840 PSR MDU WH	10%
911401851982	WL140V LED34S/830 PSR MDU WH	10%
911401852082	WL140V LED34S/840 PSR MDU WH	10%

