



Energy-efficient lighting for industrial and commercial applications

Mini500 G2

In a transparent market like petrol station, operators are under constant pressure to maintain its profitability through lower operating cost, while in the same time attracting more customer with clean and crisp station that gives comfort and safety feeling. Philips' Mini 500 LED is an intuitive undercanopy lighting that ensures optimal visual conditions while enabling huge energy savings. The luminaire's precision-control optics enables light to be distributed where it is needed the most. Its integrated components and long-life LED technology make this an easy-to-install, zero-maintenance solution.

Benefits

- Solid die-cast housing design ensures long fixture lifetime
- Increases visibility and safety at night
- Up to 60% energy saving compared to traditional high-intensity discharge lamp solutions
- Easy to install

Features

- Precision-control optics
- Wide Range of option
- Basic on and off - PSU
- Basic Dimmable - PSR
- Auxiliary Lamp version – PSU GU5.3
- Intelligent Version – PSD ACD2 IS
- Surface-mounted, Recessed –mounted, Side entry Pole mounted version.

Application

- Under Canopy
- Industrial low bay platform
- Area Lighting at petrol station

Mini500 G2

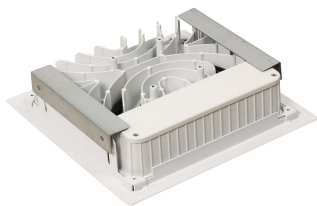
Versions



BBP500/BCP500 LED110

BBP500/BCP500/BGP500 LED110

Product details



BBP500 LED110

Mini500 G2

Application Conditions

Ambient temperature range	-30 to +40 °C
---------------------------	---------------

Approval and Application

Mech. impact protection code	IK07
Ingress protection code	IP65

Operating and Electrical

Input Voltage	220-240 V
---------------	-----------

General Information

CE mark	CE mark
Protection class IEC	Safety class I (I)
Optical cover/lens type	GT
Driver included	Yes
ENEC mark	-
Flammability mark	NO
Gear	-
Glow-wire test	650/30
Lamp family code	LED120
Light source replaceable	No
Number of gear units	1 unit
Optic type	WB
UL mark	No

Initial Performance (IEC Compliant)

Initial chromaticity	-
Init. Corr. Colour Temperature	4000 K
Init. Colour Rendering Index	85
Luminous flux tolerance	+/-7.5%
Initial input power	100 W

Application Conditions

Order Code	Full Product Name	Maximum dim level
911401583011	BBP500 LED110/NW PSD ACD2 IS A-WB	1% (depends on dimmer, ELV)
911401584511	BBP500 LED110/NW PSD ACD2 IS S-WB	1% (depends on dimmer, ELV)
911401583711	BBP500 LED110/NW PSU S-WB	Not applicable

Controls and Dimming

Order Code	Full Product Name	Dimmable
911401583011	BBP500 LED110/NW PSD ACD2 IS A-WB	Yes
911401584511	BBP500 LED110/NW PSD ACD2 IS S-WB	Yes

Order Code	Full Product Name	Dimmable
911401583711	BBP500 LED110/NW PSU S-WB	No

