



Energy-efficient lighting for industrial and commercial applications

Mini500 G2

In a transparent market like petrol station, operators are under constant pressure to maintain its profitability through lower operating cost, while in the same time attracting more customer with clean and crisp station that gives comfort and safety feeling. Philips' Mini 500 LED is an intuitive undercanopy lighting that ensures optimal visual conditions while enabling huge energy savings. The luminaire's precision-control optics enables light to be distributed where it is needed the most. Its integrated components and long-life LED technology make this an easy-to-install, zero-maintenance solution.

Benefits

- Solid die-cast housing design ensures long fixture lifetime
- Increases visibility and safety at night
- Up to 60% energy saving compared to traditional high-intensity discharge lamp solutions
- Easy to install

Features

- Precision-control optics
- Wide Range of option
- Basic on and off - PSU
- Basic Dimmable - PSR
- Auxiliary Lamp version – PSU GU5.3
- Intelligent Version – PSD ACD2 IS
- Surface-mounted, Recessed –mounted, Side entry Pole mounted version.

Application

- Under Canopy
- Industrial low bay platform
- Area Lighting at petrol station

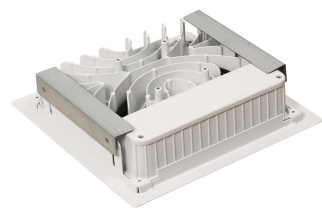
Mini500 G2

Versions



BBP500/BCP500/BGP500 LED110

Product details



BBP500 LED110



BCP500 LED110

Mini500 G2

Application Conditions

Ambient temperature range	-30 to +40 °C
Maximum dim level	Not applicable

Approval and Application

Mech. impact protection code	IK07
Ingress protection code	IP65

Controls and Dimming

Dimmable	No
----------	----

Operating and Electrical

Input Voltage	220-240 V
---------------	-----------

General Information

CE mark	CE mark
Protection class IEC	Safety class I (I)
Optical cover/lens type	GT
Driver included	Yes
ENEC mark	-
Flammability mark	NO
Gear	-
Glow-wire test	650/30
Lamp family code	LED120
Light source replaceable	No
Number of gear units	1 unit
UL mark	No

Initial Performance (IEC Compliant)

Initial chromaticity	-
Init. Colour Rendering Index	85
Luminous flux tolerance	+/-7.5%
Initial input power	100 W

General Information

Order Code	Full Product Name	Optic type
911401580211	BBP500 LED110/CW PSU S-WB	WB
911401580611	BCP500 LED110/NW PSU S-WB	WB
911401581011	BCP500 LED110/CW PSU S-MB	MB
911401581111	BCP500 LED110/CW PSU S-WB	WB
911401583711	BBP500 LED110/NW PSU S-WB	WB

Initial Performance (IEC Compliant)

Order Code	Full Product Name	Init. Corr. Colour Temperature	Order Code	Full Product Name	Init. Corr. Colour Temperature
911401580211	BBP500 LED110/CW PSU S-WB	6500 K	911401581111	BCP500 LED110/CW PSU S-WB	6500 K
911401580611	BCP500 LED110/NW PSU S-WB	4000 K	911401583711	BBP500 LED110/NW PSU S-WB	4000 K
911401581011	BCP500 LED110/CW PSU S-MB	6500 K			

