



TubeLine LED unit – Optimised comfort with a linear LED solution

TubeLine

Fluorescent linear lighting has traditionally been the preferred choice for customers demanding a high level of visual comfort. With excellent lighting uniformity on the road and walls, perfect visual guidance and high colour recognition, linear lighting offers the driver superior lighting quality and safety as well as high system redundancy compared to point-source lighting solutions. With TubeLine, the same lighting quality can be achieved but with the advantages of LED technology.

TubeLine is a state-of-the-art LED tunnel luminaire which offers all the benefits of linear lighting. With the latest LED technology, optimised dimensions and attractive pricing, linear lighting has never been more achievable within the constraints of limited budgets.

Benefits

- Optimal traffic flow due to increased visual comfort and safety compared to point-source lighting
- Quick return to investment
- Flexible, easy-to-install solution

Features

- Robust, corrosion-resistant aluminum build
- Standard length 2 m
- Smooth design, easy to clean
- Remote driver designed to prevent lane closures
- Lumen packages up to 14,400 lm
- Flexible mounting and connectivity
- Compatible with Philips Lighting controls

Application

- Traffic tunnels
- Underpasses

Specifications

Type	BGP360
Light source	Integral LED-module
Power	21-108 W (21/44/72/82/108 W system power)
Luminous flux	3,000 up to 14,400 lm (3,000/6,000/10,000/11,400/14,400 lm)
Luminaire efficacy	> 120 lm/W (129/124/126/125/120 lm/W)
Correlated Colour	NW (4,000 K)
Temperature	Optional CW (5,700 K)
Colour Rendering Index	Minimal 70
Lumen maintenance at 100,000 h median useful life*	L95
Performance Ambient Temperature Tq	+25 °C
Operating temperature range	-30 to +45 °C
Driver	Separate (non-self ballasted LED-module)
Options	Flying lead length Flying lead cable type Through-wiring Cable-gland metal Connector type
Optic	DTS, DTS-NB, DTS-WB, DTA, DTA-NB, DTA-WB
Optical element	Lenses
Optical cover	Glass flat
Material	Housing: extruded aluminium with diecasted endcaps and glass cover Extruded aluminium profiles: AlMg Si 0.5 anodised 25 µm Endcaps: diecaster aluminium, LM-6 powder-coated 65 µm Glass cover: 5 mm, thermally toughened

Colour	Extruded aluminium: natural Die-cast aluminium end-caps
Connection	Flying lead with plug fitted
Maintenance	NOT openable on site
Installation	Can be mounted with various mounting brackets: Standard, Ceiling and Cable tray-mounting brackets. A trunking solution is available: trunking profiles and cabling/connectivity solution. No integrated driver, a separate driver unit needs to be connected to power the LED unit. Operating temperature: -30 to +40 °C Recommended mounting height: > 4 m Mounting orientation: horizontal lengthwise in the tunnel
Cable gland	M12
Accessories	Mounting brackets: Standard, Ceiling and Cable tray-mounting brackets. Trunking profiles (at 2/4/6 m length) and cabling/connectivity solution. Special driver units to power the TubeLine locally and units for remote power supply.
Remarks	All accessories need to be ordered separately.

TubeLine

Versions



TubeLine BGP360 tunnel luminaire

Product details



TubeLine_BGP360-DP01.tif



TubeLine_BGP360-DP02.tif



TubeLine_BGP360-DP03.tif



TubeLine_BGP360-DP04.tif



TubeLine_BGP360-DP05.tif

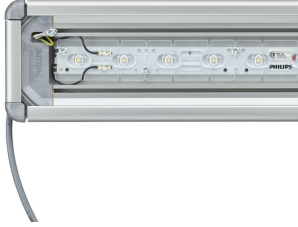


TubeLine_BGP360-DP06.tif

TubeLine

Product details

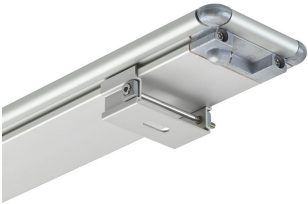
TubeLine_BGP360-DP07.tif



TubeLine_BGP360-DP08.tif



TubeLine_BGP360_ZGP360-DP09.tif



Accessories

TubeLine Acc.

Ordercode 10112100



TubeLine Acc.

Ordercode 10719200



Ordercode 10720800



Approval and Application

Mech. impact protection code	IK08
Surge Protection (Common/Differential)	- kV

Controls and Dimming

Dimmable	No
----------	----

General Information

Luminaire light beam spread	150°
CE mark	CE mark
Light source colour	Neutral white
Optical cover/lens type	FG
Driver included	No
ENEC mark	ENEC mark
Flammability mark	NO
Gear	-
Gland material	Cable gland plastic
Light source replaceable	No
Number of gear units	-
Optic type	Distribution tunnel symmetrical
Product Family Code	BGP360
UL mark	-

Initial Performance (IEC Compliant)

Init. Corr. Colour Temperature	4000 K
Init. Colour Rendering Index	≥80

Light Technical

Standard tilt angle side entry	-
Standard tilt angle posttop	-
Upward light output ratio	0

Mechanical and Housing

Colour	Aluminum
--------	----------

Operating and Electrical

Order Code	Full Product Name	Driver current
09429400	BGP360 LED30/NW DTS CFW C250WM GP	310 mA
09430000	BGP360 LED60/NW DTS CFW C250WM GP	289 mA
09432400	BGP360 LED115/NW DTS CFW C250WM GP	550 mA
09433100	BGP360 LED159/NW DTS CFW C250WM GP	700 mA
09434800	BGP360 LED30/NW II DTS CFW C250WM GP	310 mA
09435500	BGP360 LED60/NW II DTS CFW C250WM GP	289 mA
09437900	BGP360 LED115/NW II DTS CFW C250WM GP	550 mA
09438600	BGP360 LED159/NW II DTS CFW C250WM GP	700 mA

General Information

Order Code	Full Product Name	Lamp family code	Number of light sources
09429400	BGP360 LED30/NW DTS CFW C250WM GP	LED30	24
09430000	BGP360 LED60/NW DTS CFW C250WM GP	LED60	48
09432400	BGP360 LED115/NW DTS CFW C250WM GP	LED115	48
09433100	BGP360 LED159/NW DTS CFW C250WM GP	LED159	48
09434800	BGP360 LED30/NW II DTS CFW C250WM GP	LED30	24

Order Code	Full Product Name	Lamp family code	Number of light sources
09435500	BGP360 LED60/NW II DTS CFW C250WM GP	LED60	48
09437900	BGP360 LED115/NW II DTS CFW C250WM GP	LED115	48
09438600	BGP360 LED159/NW II DTS CFW C250WM GP	LED159	48

Initial Performance (IEC Compliant)

TubeLine

Order Code	Full Product Name	Initial luminous flux
09429400	BGP360 LED30/NW DTS CFW C250WM GP	2700 lm
09430000	BGP360 LED60/NW DTS CFW C250WM GP	5400 lm
09432400	BGP360 LED115/NW DTS CFW C250WM GP	10350 lm
09433100	BGP360 LED159/NW DTS CFW C250WM GP	14240 lm

Order Code	Full Product Name	Initial luminous flux
09434800	BGP360 LED30/NW II DTS CFW C250WM GP	2700 lm
09435500	BGP360 LED60/NW II DTS CFW C250WM GP	5400 lm
09437900	BGP360 LED115/NW II DTS CFW C250WM GP	10350 lm
09438600	BGP360 LED159/NW II DTS CFW C250WM GP	14240 lm

