

Simple, robust magnetic ballast

HID-Basic ballasts for HPL and HPI(PLUS) lamps

The HID-Basic ballast is an impregnated (HID standard) electromagnetic ballast for HID lamps, for use in combination with an external ignitor.

Faydaları

- Limited volume of ballast coil; also lightweight
- Simple installation and cabling

Özellikler

- Orthocyclic winding process
- Ballasts equipped with screw terminal blocks as standard
- Earthing-while-mounting facility (HID Standard ballasts)
- Low wattage losses

Uygulama

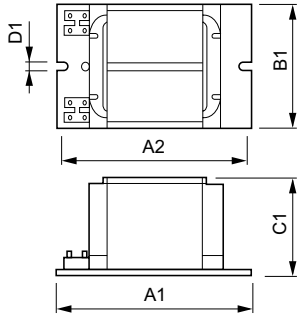
- For built-in applications for road and public lighting with HPL, HPI and HPI (Plus) lamps
- HID-Basic ballasts should be restricted to built-in situations where relative humidity is limited.

HID-Basic ballasts for HPL and HPI(PLUS) lamps

Versions



Boyutlu çizim



Product	D1	C1	A1	A2	B1
BHLE 400L 200 TS	6,2 mm	64,5 mm	165,0 mm	144,0 mm	75,5 mm
BHLE 250L 200 TS	6,2 mm	64,5 mm	165,0 mm	144,0 mm	75,5 mm

Çalıştırma ve Elektrikle İlgili Bilgiler

Giriş Frekansı	50 Hz
Giriş Voltajı	220 V

Sistem özellikleri

Order Code	Full Product Name	Nominal Balast Lamba Gücü	Order Code	Full Product Name	Nominal Balast Lamba Gücü
29900000	BHLE 250L 200 TS	250 W	29899700	BHLE 400L 200 TS	400 W

