



Product description

MHN-TD Essential

Double-envelope, double-ended Metal Halide lamps

Benefits

- All types have UV-Blocking for reduced health and fading risks

Features

- Quartz discharge tube containing high-pressure mercury and a mixture of dysprosium, holmium and thulium halides (MHW-TD), with sodium and thallium added for colour correction and arc stabilisation
- Double-ended lamps housed in a tubular clear UV-Block quartz evacuated outer envelope
- Burning position horizontal +/- 45°

Application

- Indoors – accent lighting, general lighting in downlighters, e.g. in shops and malls
- Downlighters, uplighters and wall-washers, e.g. in shops and malls
- Outdoors – floodlighting monuments, facades and billboards

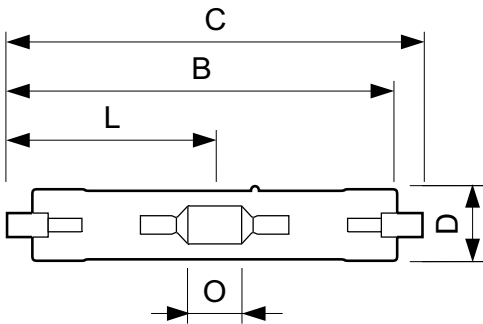
MHN-TD Essential

Versions



150 W RX7s

Dimensional drawing



MHN-TD ES 150W/742 RX7s

Product	Ø
MHN-TD Essential 150W/742 RX7s 1CT/12	17.8 mm

Approval and Application	
Energy Efficiency Label (EEL)	A+
Controls and Dimming	
Dimmable	No
General Information	
Cap-Base	RX7S
Life To 50% Failures (Nom)	8000
Light Technical	
Color Rendering Index (Max)	-
Color Rendering Index (Min)	-
Mechanical and Housing	
Bulb Finish	Clear (CL)

Approval and Application

order code	Energy Consumption kWh/1000 h	Mercury (Hg) Content (Nom)
20512415	171	16.3
27265300	165	12.3

order code	Energy Consumption kWh/1000 h	Mercury (Hg) Content (Nom)
84522800	165	18
84526600	83	13.4

Operating and Electrical

Lamp Current						Power (Rated)					
order code	(EM) (Nom)	Voltage (Max)	Voltage (Min)	Voltage (Nom)	(Nom)	order code	(EM) (Nom)	Voltage (Max)	Voltage (Min)	Voltage (Nom)	(Nom)
20512415	1.8	118	88	103	150	84522800	1.8	106	86	96	150.0
27265300	1.8	108	88	98	150.0	84526600	0.98	98	78	90	70

General Information

order code	Bulb Shape	Life To 20% Failures (Min)	Life To 20% Failures (Nom)	Life To 50% Failures (Min)	Life To 5% Failures (Min)	Life To 5% Failures (Nom)
20512415	T24	-	-	-	2000	-
27265300	T24	6500	7000	8000	4000	4000
84522800	T24	6500	7000	8000	4000	4000
84526600	T21	5800	7000	7500	4000	4000

Luminaire Design Requirements

order code	Bulb Temperature (Max)	order code	Bulb Temperature (Max)
20512415	650	84522800	650
27265300	650	84526600	500

Light Technical (1/2)

order code	Chromaticity		Color Designation	Correlated Color	Color Rendering	Lumen Maintenance	Lumen Maintenance	Lumen Maintenance
	Coordinate X (Nom)	Coordinate Y (Nom)		Temperature (Nom)	Index (Nom)	10000 h (Min)	10000 h (Nom)	2000 h (Min)
20512415	370	370	Cool White (CW)	4200	85	-	-	-
27265300	370	370	-	4200	70	60	70	74
84522800	434	400	Warm White (WW)	3000	70	50	60	69
84526600	434	402	Warm White (WW)	3000	70	45	55	59

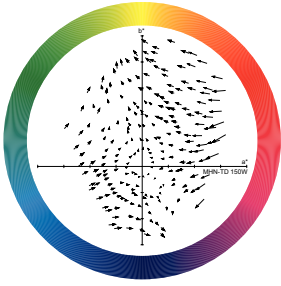
Light Technical (2/2)

order code	Chromaticity Coordinate	Lumen Maintenance 2000	Lumen Maintenance 5000	Lumen Maintenance 5000	Luminous Efficacy	Luminous Flux	Luminous Flux
	X (Nom)	h (Nom)	h (Min)	h (Nom)	(rated) (Nom)	(Rated) (Min)	(Rated) (Nom)
20512415	370	-	-	-	81	11600	12900
27265300	370	80	68	75	81	11600	12900
84522800	434	75	58	65	87	12200	13800
84526600	434	65	53	60	80	5200	6000

Mechanical and Housing

order code	Bulb Material	order code	Bulb Material
20512415	UV-Block Quartz	84522800	-
27265300	-	84526600	-

Colour Rendering Diagrams



Light Distribution Diagrams

