



# SmartBalance recessed – combining performance with smart design

## SmartBalance, recessed

Many people are keen to apply recessed luminaires with a surface of light as an alternative to louver-type solutions. At the same time they expect the luminaires to be office norm-compliant as well as highly energy-efficient. Meeting all relevant office norms, SmartBalance recessed is the next step in surface-of-light recessed luminaires for the specification market. Thanks to state-of-the-art LED technology it not only offers increased energy efficiency compared with fluorescent, but is also visually appealing without being intrusive. For those looking for an exciting design element there are versions with inner masking. SmartBalance is also available in surface-mounted, suspended and free floor-standing versions.

### Benefits

- Operational cost savings, including 40% saving on energy cost
- Appealing, smooth surface-of-light solution
- Office norm-compliant

### Features

- Energy efficacy up to 108 lm/W (depending on type)
- UGR up to 18 / L65 up to < 2300 cd/m<sup>2</sup> (depending on type)
- Offers different geometries and ways of mounting
- Number of options to meet the needs of the specification business, e.g. DALI control and emergency lighting

## SmartBalance, recessed

### Application

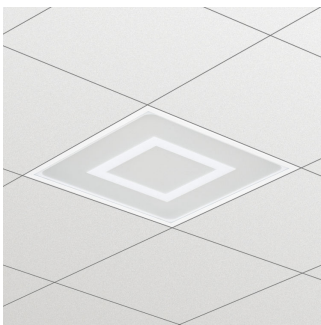
- Offices (open-plan, meeting rooms, cell offices, circulation areas)
- Healthcare
- Hospitality

### Specifications

<b>Type</b>	RC480B (module size 600 x 600 and 300 x 1,200 mm version)
	RC482B (module size 625 x 625 and 310 x 1,250 mm version)
<b>Ceiling type</b>	Exposed T-bar ceiling
	Symmetrical concealed T-bar ceiling
	Plaster (board) ceiling
<b>Ceiling grid</b>	Module size in length: 600 mm
	Module size in length: 625 mm
	Module size in length: 1200 mm
	Module size in length: 1250 mm
<b>Light source</b>	Non-replaceable LED module
<b>Power</b>	29 to 40 W (depending on type)
<b>Beam angle</b>	90°
<b>Luminous flux</b>	3,500 or 4,200 lm
<b>Correlated Colour</b>	3,000 or 4,000 K
<b>Temperature</b>	
<b>Colour Rendering Index</b>	> 80
<b>Lumen maintenance at median useful life* 50,000 h</b>	L80
<b>Control gear failure rate at median useful life 50,000 h</b>	5%

<b>Performance Ambient</b>	+25 °C
<b>Temperature Tq</b>	
<b>Operating temperature range</b>	+10 to +40 °C
<b>Driver</b>	Built-in
<b>Mains voltage</b>	220-240 V / 50-60 Hz
<b>Dimming</b>	DALI dimmable
<b>Options</b>	Acrylate micro-lens optic without (AC-MLO) or with (AC-MLO-R) innermasking, also referred to as MK
	Emergency lighting (integrated): 1 hour (EL1), 3 hours (EL3)
	ActiLume DALI gen2 (ACL)
<b>Material</b>	Housing: plastic or zinc-coated steel
	Rim: post-lacquered
	Optics: acrylaat
<b>Colour</b>	White (WH)
	Silver grey (SI)
<b>Maintenance</b>	Optical module sealed for life; no internal cleaning required
<b>Installation</b>	Exposed ceilings: inlay, no brackets needed
	Concealed ceilings: with bracket (reach 20-40 or 60 mm)
	Plaster (board) ceiling: with bracket (reach 20-40 or 60 mm)
<b>Accessories</b>	Bracket ZBS460 SMB (4 pcs) included for concealed and plaster (board) ceiling versions

### Versions



SmartBalance recessed RC480B LED luminaire with inner masking, module size 600 (concealed profile ceiling version)

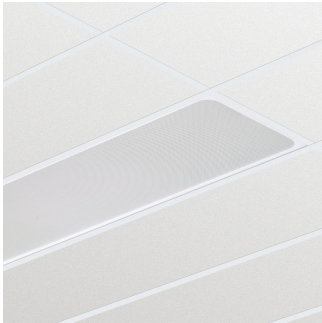


# SmartBalance, recessed

## Versions



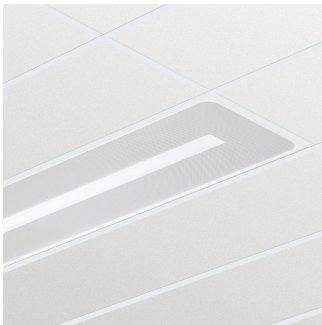
SmartBalance recessed RC480B LED luminaire with ActiLume, module size 600 (visible profile ceiling version)



SmartBalance recessed RC480B LED luminaire, module size 300x1200 (visible profile ceiling version)



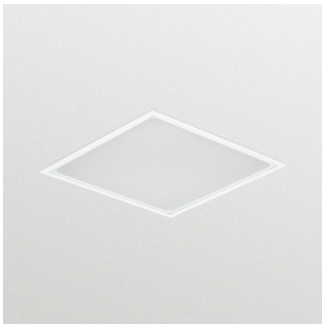
SmartBalance recessed RC480B LED luminaire with inner masking, module size 600 (visible profile ceiling version)



SmartBalance recessed RC480B LED luminaire with inner masking, module size 300x1200 (visible profile ceiling version)



SmartBalance recessed RC480B LED luminaire, module size 600 (concealed profile ceiling version)

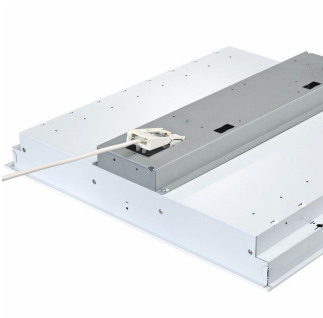
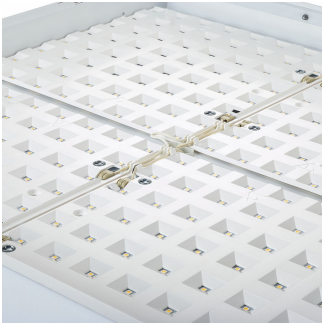


SmartBalance module600 - LED Module, system flux 3500 lm

## Product details



Product details



SmartBalance, recessed

Product details



### Application Conditions

Ambient temperature range	+10 to +40 °C
Maximum dim level	1%
Suitable for random switching	Yes (relates to presence/movement detection and daylight harvesting)

### Approval and Application

Mech. impact protection code	IK02
Ingress protection code	IP20

### Controls and Dimming

Dimmable	Yes
----------	-----

### Operating and Electrical

Input Voltage	220-240 V
---------------	-----------

### General Information

CE mark	CE mark
Protection class IEC	Safety class I
Driver included	Yes
Emergency lighting	No
ENEC mark	ENEC plus mark
Flammability mark	F
Glow-wire test	Temperature 650 °C, duration 5 s
Lamp family code	LED35S
Light source replaceable	No
Number of gear units	1 unit
Number of light sources	1
Optic type	No
UL mark	No

### Initial Performance (IEC Compliant)

Initial chromaticity	(0.38, 0.38) SDCM <3
Init. Corr. Colour Temperature	4000 K
Init. Colour Rendering Index	≥80
Initial luminous flux	3500 lm
Luminous flux tolerance	+/-10%

### Mechanical and Housing

Colour	White
--------	-------

### General Information

Order Code	Full Product Name	Optical cover/lens type	Embedded control	Optical element	Product Family Code
27608100	RC480B LED35S/840 PSD W60L60 CPC MK PIP	AC-MLO-R	No	MK	RC480B
10298300	RC480B LED35S/840 PSD W60L60 VPC W	AC-MLO	No	No	RC480B
10299000	RC480B LED35S/840 PSD W60L60 VPC PIP	AC-MLO	No	No	RC480B
10300300	RC480B LED35S/840 PSD W60L60 VPC ACL W	AC-MLO	ACL	No	RC480B
10302700	RC480B LED35S/840 PSD W30L120 VPC PIP	AC-MLO	No	No	RC480B
10303400	RC480B LED35S/840 PSD W60L60 VPC MK PIP	AC-MLO-R	No	MK	RC480B
10304100	RC480B LED35S/840 PSD W30L120 VPC MK PIP	AC-MLO-R	No	MK	RC480B
10309600	RC480B LED35S/840 PSD W60L60 CPC PIP	AC-MLO	No	No	RC482B
10343000	RC480B LED35S/840 PSD W60L60 PCV PIP	AC-MLO	No	No	RC480B

### Initial Performance (IEC Compliant)

Order Code	Full Product Name	Initial LED luminaire efficacy	Initial input power	Order Code	Full Product Name	Initial LED luminaire efficacy	Initial input power
27608100	RC480B LED35S/840 PSD W60L60 CPC MK PIP	101 lm/W	34.5 W	10298300	RC480B LED35S/840 PSD W60L60 VPC W	123 lm/W	28.5 W

## SmartBalance, recessed

Order Code	Full Product Name	Initial LED luminaire efficacy	Initial input power
10299000	RC480B LED35S/840 PSD W60L60 VPC PIP	123 lm/W	28.5 W
10300300	RC480B LED35S/840 PSD W60L60 VPC ACL W	119 lm/W	29.5 W
10302700	RC480B LED35S/840 PSD W30L120 VPC PIP	117 lm/W	30 W
10303400	RC480B LED35S/840 PSD W60L60 VPC MK PIP	108 lm/W	32.5 W

Order Code	Full Product Name	Initial LED luminaire efficacy	Initial input power
10304100	RC480B LED35S/840 PSD W30L120 VPC MK PIP	101 lm/W	34.5 W
10309600	RC480B LED35S/840 PSD W60L60 CPC PIP	119 lm/W	29.5 W
10343000	RC480B LED35S/840 PSD W60L60 PCV PIP	119 lm/W	29.5 W

### Mechanical and Housing

Order Code	Full Product Name	Geometry
27608100	RC480B LED35S/840 PSD W60L60 CPC MK PIP	Width 0.60 m, length 0.60 m
10298300	RC480B LED35S/840 PSD W60L60 VPC W	Width 0.60 m, length 0.60 m
10299000	RC480B LED35S/840 PSD W60L60 VPC PIP	Width 0.60 m, length 0.60 m
10300300	RC480B LED35S/840 PSD W60L60 VPC ACL W	Width 0.60 m, length 0.60 m
10302700	RC480B LED35S/840 PSD W30L120 VPC PIP	Width 0.30 m, length 1.20 m

Order Code	Full Product Name	Geometry
10303400	RC480B LED35S/840 PSD W60L60 VPC MK PIP	Width 0.60 m, length 0.60 m
10304100	RC480B LED35S/840 PSD W30L120 VPC MK PIP	Width 0.30 m, length 1.20 m
10309600	RC480B LED35S/840 PSD W60L60 CPC PIP	Width 0.60 m, length 0.60 m
10343000	RC480B LED35S/840 PSD W60L60 PCV PIP	Width 0.60 m, length 0.60 m

