



SmartBalance recessed – combining performance with smart design

SmartBalance, recessed

Many people are keen to apply recessed luminaires with a surface of light as an alternative to louver-type solutions. At the same time they expect the luminaires to be office norm-compliant as well as highly energy-efficient. Meeting all relevant office norms, SmartBalance recessed is the next step in surface-of-light recessed luminaires for the specification market. Thanks to state-of-the-art LED technology it not only offers increased energy efficiency compared with fluorescent, but is also visually appealing without being intrusive. For those looking for an exciting design element there are versions with inner masking. SmartBalance is also available in surface-mounted, suspended and free floor-standing versions.

Benefits

- Operational cost savings, including 40% saving on energy cost
- Appealing, smooth surface-of-light solution
- Office norm-compliant

Features

- Energy efficacy up to 108 lm/W (depending on type)
- UGR up to 18 / L65 up to < 2300 cd/m² (depending on type)
- Offers different geometries and ways of mounting
- Number of options to meet the needs of the specification business, e.g. DALI control and emergency lighting

SmartBalance, recessed

Application

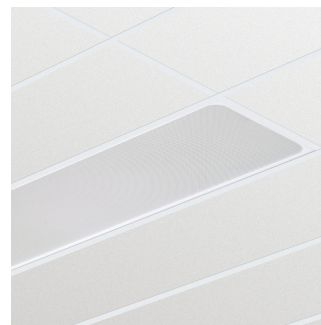
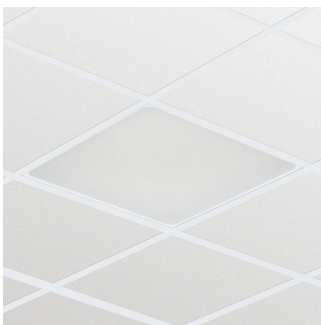
- Offices (open-plan, meeting rooms, cell offices, circulation areas)
- Healthcare
- Hospitality

Specifications

Type	RC480B (module size 600 x 600 and 300 x 1,200 mm version)
	RC482B (module size 625 x 625 and 310 x 1,250 mm version)
Ceiling type	Exposed T-bar ceiling
	Symmetrical concealed T-bar ceiling
	Plaster (board) ceiling
Ceiling grid	Module size in length: 600 mm
	Module size in length: 625 mm
	Module size in length: 1200 mm
	Module size in length: 1250 mm
Light source	Non-replaceable LED module
Power	29 to 40 W (depending on type)
Beam angle	90°
Luminous flux	3,500 or 4,200 lm
Correlated Colour	3,000 or 4,000 K
Temperature	
Colour Rendering Index	> 80
Lumen maintenance at median useful life* 50,000 h	L80
Control gear failure rate at median useful life 50,000 h	5%

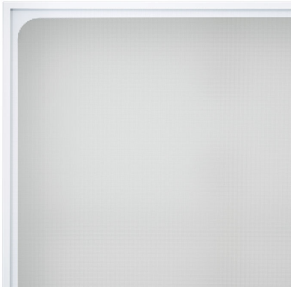
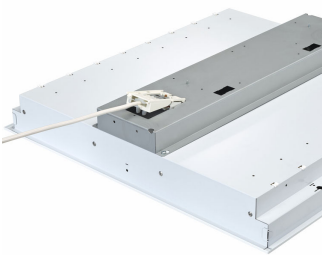
Performance Ambient Temperature Tq	+25 °C
Operating temperature range	+10 to +40 °C
Driver	Built-in
Mains voltage	220-240 V / 50-60 Hz
Dimming	DALI dimmable
Options	Acrylate micro-lens optic without (AC-MLO) or with (AC-MLO-R) innermasking, also referred to as MK
	Emergency lighting (integrated): 1 hour (EL1), 3 hours (EL3)
	ActiLume DALI gen2 (ACL)
Material	Housing: plastic or zinc-coated steel
	Rim: post-lacquered
	Optics: acrylaat
Colour	White (WH)
	Silver grey (SI)
Maintenance	Optical module sealed for file; no internal cleaning required
Installation	Exposed ceilings: inlay, no brackets needed
	Concealed ceilings: with bracket (reach 20-40 or 60 mm)
	Plaster (board) ceiling: with bracket (reach 20-40 or 60 mm)
Accessories	Bracket ZBS460 SMB (4 pcs) included for concealed and plaster (board) ceiling versions

Versions



SmartBalance recessed RC480B LED
luminaire, module size 300x1200
(visible profile ceiling version)

Product details



Application Conditions

Ambient temperature range	+10 to +40 °C
Maximum dim level	1%
Suitable for random switching	Yes (relates to presence/movement detection and daylight harvesting)

Approval and Application

Mech. impact protection code	IK02
Ingress protection code	IP20

Controls and Dimming

Dimmable	Yes
----------	-----

Operating and Electrical

Input Voltage	220-240 V
---------------	-----------

General Information

CE mark	CE mark
Protection class IEC	Safety class I (I)
Optical cover/lens type	AC-MLO
Driver included	Yes
Emergency lighting	No
ENEC mark	ENEC plus mark
Flammability mark	F
Glow-wire test	650/5
Lamp family code	LED35S
Embedded control	No
Light source replaceable	No
Number of gear units	1 unit
Number of light sources	1
Optic type	No
Optical element	No
Product Family Code	RC480B
UL mark	No

Initial Performance (IEC Compliant)

Initial chromaticity	(0.38, 0.38) SDCM <3
Init. Corr. Colour Temperature	4000 K
Init. Colour Rendering Index	≥80
Initial luminous flux	3500 lm
Luminous flux tolerance	+/-10%

Mechanical and Housing

Colour	White
--------	-------

Initial Performance (IEC Compliant)

Order Code	Full Product Name	Initial LED luminaire efficacy	Initial input power
910502022903	RC480B LED35S/840 PSD W60L60 VPC PIP	123 lm/W	28.5 W
910502023203	RC480B LED35S/840 PSD W30L120 VPC PIP	117 lm/W	30 W

Mechanical and Housing

Order Code	Full Product Name	Geometry	Order Code	Full Product Name	Geometry
910502022903	RC480B LED35S/840 PSD W60L60 VPC PIP	W60L60	910502023203	RC480B LED35S/840 PSD W30L120 VPC PIP	W30L120

SmartBalance, recessed

