



# ProAir – an unrivaled combination of light quality and efficiency

## ProAir

Store designers want a spot that fits in with their store design. Visual merchandisers need the very best light quality and spots that are easily adjustable. And maintenance managers and green champions want to reduce energy consumption and maintenance costs. ProAir offers store designers a LED spot with an elegant and compact design that they can customize to suit their needs. It gives visual merchandisers great rendering of colors and whites and excellent color consistency, as well as well-defined, clean beams for maximum impact. All versions of ProAir offer low maintenance and energy consumption.

### Benefits

- Best-in-class efficiency
- Attractive design that blends in with the store architecture

### Features

- Elegant, compact design – customizable
- Great rendering of colors and whites and excellent color consistency
- Clean, well-defined beams
- Low maintenance and energy consumption

### Application

- Shops
- Hotels
- Offices

### Specifications

# ProAir

<b>Type</b>	ST640T
<b>Light source</b>	Non-replaceable LED module
<b>Power</b>	16 W (LED17S) 26.5 W (LED20S) 25 W (LED27S) 35 W (LED39S) 48 W (LED49S)
<b>Beam angle</b>	NB (10, 18°), MB and WB
<b>Luminous flux (light color 830)</b>	NB: 2000 lm MB, WB: 1700, 2700, 3900 and 4900 lm
<b>Correlated Color Temperature</b>	3000 K
<b>Color Rendering Index</b>	80 90 92 (CrispWhite, PremiumWhite version)
<b>Standard deviation color matching</b>	3
<b>Median useful life L70B50</b>	70,000 hours
<b>Median useful life L80B50</b>	50,000 hours

<b>Median useful life L90B50</b>	25,000 hours
<b>Average ambient temperature</b>	+25 °C
<b>Operating temperature range</b>	+10 to +40 °C
<b>Driver</b>	Built-in
<b>Mains voltage</b>	230 or 240 V / 50-60 Hz
<b>Dimming</b>	DALI-dimmable version available
<b>Material</b>	Housing: die-cast aluminum Gearbox: folded metal
<b>Color</b>	Black (BL, RAL9004) White (WH, RAL9003)
<b>Optic</b>	Reflectors in silver-coated plastic
<b>Optical cover</b>	Curved glass (NB versions) Acrylic cover (MB and WB versions)
<b>Connection</b>	3-C track adaptor (standard versions) or 5C6 tracks adaptor (DALI-dimmable versions)
<b>Installation</b>	On 3-circuit track On DALI track
<b>Accessories</b>	Glare shield (GS), honeycomb (HC), skirt (SK), aiming pole

## Versions



## Product details



Fully integrated heatsink



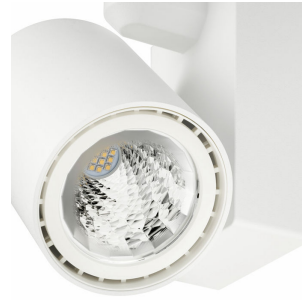
Fully integrated heatsink

# ProAir

## Product details



Detailed front face for an optimized light effect



Detailed front face for an optimized light effect



Customized hinge for re-aiming from the ground with a pole



Customized hinge for re-aiming from the ground with a pole

## Accessories



Honey comb

Ordercode 25987000

