



RoadFlair Sleek and superior Beyond anticipation

RoadFlair

Designed for major and city roads, Philips RoadFlair is a new and exciting product set to brighten your streets beyond imagination. Smartly-designed to bring cities the highest savings possible with best-in-class lumen per watt, this road lighting production comes at a competitive price bound to excite. Philips RoadFlair brings energy efficiency, improves a city's sustainability drive and delivers significant cost reduction in urban environments. The right road luminaire coupled with the right lighting application will create the best environment for your municipality, benefiting local communities and boosting tourism and businesses.

Benefits

- High lumen efficacy 120 to 140 lumen per watt – much higher than currently available solutions.
- Unique functional design Sleek, light-weight and well-designed luminaire.
- Control and dimming ready Supports CityTouch connect application, 7-Pin Nema socket and standard outdoor dimming protocols.
- Value for money Most competitive product in its segment Perfect for renovation, upgrading projects. Best-in-class LED lighting technology at an unmatched, competitive price.

Features

- Excellent thermal management operating Temperature -40 to 50C
- Exposed Optic Transparent and weather resistant grade polycarbonate optics
- Multiple optic Options to meet all road and street lighting application requirements
- Lightweight housing design
- Available in 3000K, 4000K, 5000K and 5700K CCT options

Application

- Pedestrian Road
- Highway Road
- Residential Road
- Interchange

Versions



BRP392/393 LED 220-240V DM

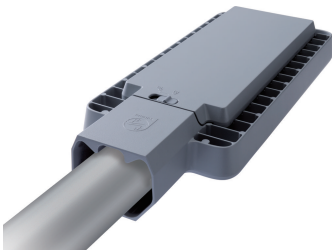


BRP394 LED 220-240V DM



BRP391 LED 220-240V DM

Product details



Application Conditions	
Maximum dim level	Not applicable
Approval and Application	
Mech. impact protection code	IK08
Controls and Dimming	
Dimmable	No
General Information	
CE mark	CE mark
Optical cover/lens type	-
Driver included	Yes
ENEC mark	-
Flammability mark	-
Light source replaceable	No
Optic type	-
Initial Performance (IEC Compliant)	
Init. Colour Rendering Index	>70
Light Technical	
Standard tilt angle side entry	0°
Standard tilt angle posttop	-
Upward light output ratio	0
Mechanical and Housing	
Colour	Grey

General Information

Order Code	Full Product Name	Light source colour	Lamp family	
			code	Number of gear units
911401611504	BRP393 LED288/NW 240W 220-240V DM GM	740 neutral white	-	2 units
911401815698	BRP392 LED120/NW 100W 220-240V DM	740 neutral white	-	1 unit
911401816298	BRP392 LED108/NW 90W 220-240V DM	740 neutral white	-	1 unit
911401816498	BRP392 LED144/NW 120W 220-240V DM	740 neutral white	-	1 unit
911401816598	BRP392 LED168/NW 140W 220-240V DM	740 neutral white	-	1 unit
911401816698	BRP392 LED180/NW 150W 220-240V DM	740 neutral white	-	1 unit
911401816798	BRP392 LED192/NW 160W 220-240V DM	740 neutral white	-	1 unit
911401818298	BRP392 LED113/WW 100W 220-240V DM	730 warm white	-	1 unit
911401818398	BRP392 LED124/WW 110W 220-240V DM	730 warm white	-	1 unit
911401818498	BRP392 LED135/WW 120W 220-240V DM	730 warm white	-	1 unit
911401818698	BRP392 LED158/WW 140W 220-240V DM	730 warm white	-	1 unit
911401815398	BRP394 LED240/NW 200W 220-240V DM	740 neutral white	-	2 units
911401816998	BRP394 LED216/NW 180W 220-240V DM	740 neutral white	-	2 units
911401815798	BRP391 LED96/NW 80W 220-240V DM	740 neutral white	-	1 unit
911401815898	BRP391 LED48/NW 40W 220-240V DM	740 neutral white	-	1 unit
911401815998	BRP391 LED60/NW 50W 220-240V DM	740 neutral white	-	1 unit
911401816098	BRP391 LED72/NW 60W 220-240V DM	740 neutral white	-	1 unit
911401816198	BRP391 LED84/NW 70W 220-240V DM	740 neutral white	-	1 unit
911401817698	BRP391 LED45/WW 40W 220-240V DM	730 warm white	-	1 unit
911401817798	BRP391 LED56/WW 50W 220-240V DM	730 warm white	-	1 unit
911401817998	BRP391 LED79/WW 70W 220-240V DM	730 warm white	-	1 unit

Initial Performance (IEC Compliant)

Order Code	Full Product Name	Init. Corr. Colour Temperature	Initial luminous flux	Order Code	Full Product Name	Init. Corr. Colour Temperature	Initial luminous flux
911401611504	BRP393 LED288/NW 240W 220-240V DM GM	4000 K	28800 lm	911401818698	BRP392 LED158/WW 140W 220-240V DM	3000 K	15792 lm
911401815698	BRP392 LED120/NW 100W 220-240V DM	4000 K	12000 lm	911401815398	BRP394 LED240/NW 200W 220-240V DM	4000 K	24000 lm
911401816298	BRP392 LED108/NW 90W 220-240V DM	4000 K	10800 lm	911401816998	BRP394 LED216/NW 180W 220-240V DM	4000 K	21600 lm
911401816498	BRP392 LED144/NW 120W 220-240V DM	4000 K	14400 lm	911401815798	BRP391 LED96/NW 80W 220-240V DM	4000 K	9600 lm
911401816598	BRP392 LED168/NW 140W 220-240V DM	4000 K	16800 lm	911401815898	BRP391 LED48/NW 40W 220-240V DM	4000 K	4800 lm
911401816698	BRP392 LED180/NW 150W 220-240V DM	4000 K	18000 lm	911401815998	BRP391 LED60/NW 50W 220-240V DM	4000 K	6000 lm
911401816798	BRP392 LED192/NW 160W 220-240V DM	4000 K	19200 lm	911401816098	BRP391 LED72/NW 60W 220-240V DM	4000 K	7200 lm
911401818298	BRP392 LED113/WW 100W 220-240V DM	3000 K	11280 lm	911401816198	BRP391 LED84/NW 70W 220-240V DM	4000 K	8400 lm
911401818398	BRP392 LED124/WW 110W 220-240V DM	3000 K	12408 lm	911401817698	BRP391 LED45/WW 40W 220-240V DM	3000 K	4512 lm
911401818498	BRP392 LED135/WW 120W 220-240V DM	3000 K	13536 lm	911401817798	BRP391 LED56/WW 50W 220-240V DM	3000 K	5640 lm

Order Code	Full Product Name	Init. Corr. Colour Temperature	Initial luminous flux
911401817998	BRP391 LED79/WW 70W 220-240V DM	3000 K	7896 lm

