

# LED Driver Transformer 12W 12V. The ideal complement for LED 12V systems, up to 12W.

## LED transformer

The new LED transformer 12W 12V operates with 12Vdc LED loads from 6W to 12W, with high performance inside. The mains voltage range of 110 to 240V. The output voltage is a stable and safe 12Vdc, and it has long lifetime (30,000 hours). It's compact size and light weight allows to use it in several different types of installation.

### Benefits

- Operation with 12Vdc LED loads from 6W to 12W
- Compact design for easy installation
- Ideal for the application with low power 12Vdc LED strips and LED boards

### Features

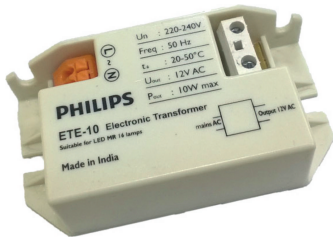
- Multi-voltage
- 30,000 hours lifetime
- Silent operation
- 2 years warranty

### Application

- Lamps LED (6W-12W)

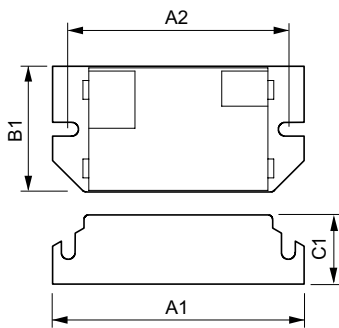
# LED transformer

## Versions



ET-E 10 W LED 220-240V

## Dimensional drawing



Product	A1	A2	B1	C1	D1
ET-E 10 W LED 220-240V	80 mm	70 mm	40 mm	22 mm	4.4 mm

