



CoreLine Recessed Spot – for every project, where light really matters

CoreLine Recessed Spot

CoreLine Recessed Spot delivers on the CoreLine promise of innovative, easy to use and high-quality luminaires. CoreLine Recessed Spot is a recessed spot range designed to replace halogen-based luminaires. Its halogen-like look and attractive price make it easier for customers to make the switch to LED. This product provides a natural lighting effect for accent lighting applications, as well as instant energy savings and much longer lifetime – an environmentally friendly solution. With the push-in connectors, installation is fast and straightforward.

Benefits

- High-end material and finish for decorative applications; dedicated optics for halogen-reflector look and glare control
- 80% energy saving and 15 times longer lifetime compare to standard halogen-based luminaires
- Due to its slim design it fits in most types of ceiling; compatible with nearly all wall-mounted dimmers
- Wide portfolio to cover multiple application spaces; from bathroom to diningroom

CoreLine Recessed Spot

Features

- Available in fixed and adjustable versions
- Different finishes available
- Choice of color temperatures: 2700, 3000, 4000 K and DimTone (dim 3000K to 2200K)
- Available in two light levels; 650 lumen (standard halogen) 1200 lumen (CDM-T 20W Standard)
- Available in two beam angles: 32° Medium Beam 60° Very Wide Beam
- Slim design; smaller than 60 mm
- Push-in connector with through-wiring option
- High Performance Dimming driver
- Chip-on-Board (COB) technology

Application

- Reception areas
- Decorative applications
- Retail stores and small fashion shops
- Corridors
- Bathrooms and toilets

Specifications

Type	RS140B (fixed version)
	RS141B (adjustable version)
Ceiling type	Plaster (board) ceiling
Light source	Non replaceable LED module
Power	8, 11 and 15 W
Beam angle	32°
Luminous flux	650, 900 and 1200 lm
Correlated Color Temperature	2700, 3000 or 4000 K
Color Rendering Index	85
Lumen maintenance at median useful life*	L70
50000 h	
Control gear failure rate	5%
at median useful life	
50000 h	
Performance Ambient Temperature Tq	+25 °C

Operating temperature range	-20 to +35 °C
Driver	Integrated for 650 and 900 lm, separate for 1200 lm
Mains voltage	230 or 240 V / 50-60 Hz
Dimming	Compatible with wide range of leading and trailing edge phase-cut dimmers
Material	Housing: aluminum
Color	White
	Brushed aluminum
	Black
Optical cover	Polycarbonate, clear
Connection	Push-in connector or with pull relief
Installation	Fixation by means of spring fasteners
	Through-wiring possible
Remarks	Internal optical unit 20° tiltable

CoreLine Recessed Spot

Versions



CoreLine recessed spot RS140B



CoreLine recessed spot RS141B



32 °



32 °



32 °

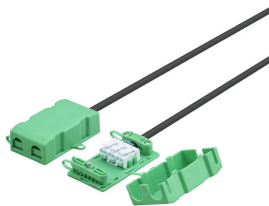
Product details



CoreLine_Recessed_Spot-
RS140_RS141B-DPP.tif



CoreLine_Recessed_Spot-
RS140B-DPP.tif



CoreLine_Recessed_Spot-
RS140_RS141B-1DPP.TIF



CoreLine_Recessed_Spot-
RS140_RS141B-2DPP.TIF

CoreLine Recessed Spot

Product details

CoreLine_Recessed_Spot-
RS140Z-1DPP.TIF



CoreLine Recessed Spot RS140Z
1Acc



CoreLine_Recessed_Spot-RS141B-
DPP.tif



CoreLine_Recessed_Spot-
RS140Z-2DPP.TIF



CoreLine Recessed Spot RS140Z
2Acc



CoreLine_Recessed_Spot-
RS140B_Fixed_ALU-DPP.TIF



CoreLine_Recessed_Spot-
RS140Z-3DPP.TIF



CoreLine_Recessed_Spot-
RS141B_Adjustable_ALU-DPP.TIF



CoreLine Recessed Spot

Product details

CoreLine_Recessed_Spot-
RS140Z-4DPP.TIF



CoreLine_Recessed_Spot-
RS140Z-5DPP.TIF



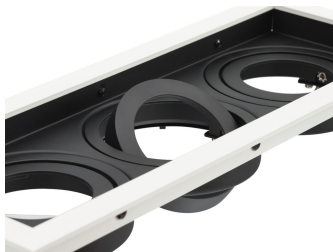
CoreLine_Recessed_Spot-
RS140B_Fixed_WH-DPP.TIF



CoreLine_Gridlight_Single-
RS145Z-2DPP.TIF



CoreLine_Gridlight-RS145Z-
DPP.TIF



CoreLine_Gridlight_Single-
RS145Z-1DPP.TIF



CoreLine_Gridlight_Double-
RS145Z-2DPP.TIF



CoreLine_Gridlight_Double-
RS145Z-1DPP.TIF



CoreLine_Gridlight_Triple-
RS145Z-2DPP.TIF



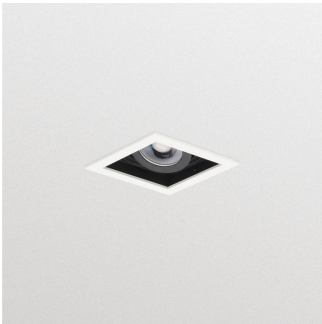
CoreLine Recessed Spot

Product details



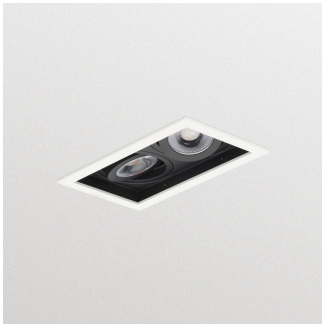
CoreLine_Gridlight_Triple-
RS145Z-1DPP.TIF

Accessories



RS143Z Single

Ordercode 912401483212



RS143Z Double

Ordercode 912401483213



RS143Z Triple

Ordercode 912401483214

CoreLine Recessed Spot

Application Conditions

Ambient temperature range	0 to +35 °C
Maximum dim level	10%
Suitable for random switching	Yes

Approval and Application

Mech. impact protection code	IK02
------------------------------	------

Controls and Dimming

Dimmable	Yes
----------	-----

Operating and Electrical

Input Voltage	220 to 240 V
---------------	--------------

General Information

CE mark	CE mark
Protection class IEC	Safety class II
Driver included	Yes
ENEC mark	-
Flammability mark	For mounting on normally flammable surfaces
Glow-wire test	Temperature 650 °C, duration 30 s
Light source replaceable	No
Number of gear units	1 unit

Initial Performance (IEC Compliant)

Init. Color Rendering Index	85
Initial LED luminaire efficacy	82 lm/W
Luminous flux tolerance	+/-10%

Approval and Application

Order Code	Full Product Name	Ingress protection code
912401483031	RS140B LED6-32-/827 PSR PI6 WH	IP65
912401483032	RS140B LED6-32-/830 PSR PI6 WH	IP65
912401483033	RS140B LED6-32-/840 PSR PI6 WH	IP65
912401483039	RS140B LED9-32-/830 PSR PI6 WH	IP65
912401483040	RS140B LED9-32-/840 PSR PI6 WH	IP65
912401483043	RS140B LED12-36-/830 PSR PI6 WH	IP65
912401483044	RS140B LED12-36-/840 PSR PI6 WH	IP65
912401483034	RS141B LED6-32-/827 PSR PI6 WH	IP44
912401483035	RS141B LED6-32-/830 PSR PI6 WH	IP44
912401483036	RS141B LED6-32-/840 PSR PI6 WH	IP44
912401483037	RS141B LED9-32-/830 PSR PI6 WH	IP44
912401483038	RS141B LED9-32-/840 PSR PI6 WH	IP44
912401483041	RS141B LED12-36-/830 PSR PI6 WH	IP44
912401483042	RS141B LED12-36-/840 PSR PI6 WH	IP44
912401483053	RS140B LED12-36-/830 PSR PI6 ALU	IP65
912401483054	RS140B LED12-36-/840 PSR PI6 ALU	IP65
912401483045	RS140B LED6-32-/827 PSR PI6 ALU	IP65
912401483046	RS140B LED6-32-/830 PSR PI6 ALU	IP65
912401483047	RS140B LED6-32-/840 PSR PI6 ALU	IP65
912401483051	RS140B LED9-32-/830 PSR PI6 ALU	IP65
912401483052	RS140B LED9-32-/840 PSR PI6 ALU	IP65
912401483048	RS141B LED6-32-/827 PSR PI6 ALU	IP44
912401483049	RS141B LED6-32-/830 PSR PI6 ALU	IP44
912401483050	RS141B LED6-32-/840 PSR PI6 ALU	IP44
912401483119	RS142B LED6-32-/827 PSR PI6 WH FR	IP44
912401483120	RS142B LED6-32-/830 PSR PI6 WH FR	IP44

General Information

Order Code	Full Product Name	Beam angle of light source	Optic type
912401483031	RS140B LED6-32-/827 PSR PI6 WH	32 °	Beam angle 32°
912401483032	RS140B LED6-32-/830 PSR PI6 WH	32 °	Beam angle 32°
912401483033	RS140B LED6-32-/840 PSR PI6 WH	32 °	Beam angle 32°
912401483039	RS140B LED9-32-/830 PSR PI6 WH	32 °	Beam angle 32°
912401483040	RS140B LED9-32-/840 PSR PI6 WH	32 °	Beam angle 32°
912401483043	RS140B LED12-36-/830 PSR PI6 WH	36 °	Beam angle 36°
912401483044	RS140B LED12-36-/840 PSR PI6 WH	36 °	Beam angle 36°
912401483034	RS141B LED6-32-/827 PSR PI6 WH	32 °	Beam angle 32°
912401483035	RS141B LED6-32-/830 PSR PI6 WH	32 °	Beam angle 32°
912401483036	RS141B LED6-32-/840 PSR PI6 WH	32 °	Beam angle 32°
912401483037	RS141B LED9-32-/830 PSR PI6 WH	32 °	Beam angle 32°
912401483038	RS141B LED9-32-/840 PSR PI6 WH	32 °	Beam angle 32°
912401483041	RS141B LED12-36-/830 PSR PI6 WH	36 °	Beam angle 36°
912401483042	RS141B LED12-36-/840 PSR PI6 WH	36 °	Beam angle 36°

Order Code	Full Product Name	Beam angle of light source	Optic type
912401483053	RS140B LED12-36-/830 PSR PI6 ALU	36 °	Beam angle 36°
912401483054	RS140B LED12-36-/840 PSR PI6 ALU	36 °	Beam angle 36°
912401483045	RS140B LED6-32-/827 PSR PI6 ALU	32 °	Beam angle 32°
912401483046	RS140B LED6-32-/830 PSR PI6 ALU	32 °	Beam angle 32°
912401483047	RS140B LED6-32-/840 PSR PI6 ALU	32 °	Beam angle 32°
912401483051	RS140B LED9-32-/830 PSR PI6 ALU	32 °	Beam angle 32°
912401483052	RS140B LED9-32-/840 PSR PI6 ALU	32 °	Beam angle 32°
912401483048	RS141B LED6-32-/827 PSR PI6 ALU	32 °	Beam angle 32°
912401483049	RS141B LED6-32-/830 PSR PI6 ALU	32 °	Beam angle 32°
912401483050	RS141B LED6-32-/840 PSR PI6 ALU	32 °	Beam angle 32°
912401483119	RS142B LED6-32-/827 PSR PI6 WH FR	32 °	Beam angle 32°
912401483120	RS142B LED6-32-/830 PSR PI6 WH FR	32 °	Beam angle 32°

Initial Performance (IEC Compliant)

CoreLine Recessed Spot

Order Code	Full Product Name	Initial chromaticity	Init. Corr. Color Temperature	Initial luminous flux	Initial input power
912401483031	RS140B LED6-32-/827 PSR PI6 WH	(0.46, 0.41) SDCM <5	2700 K	650 lm	8 W
912401483032	RS140B LED6-32-/830 PSR PI6 WH	(0.43, 0.40) SDCM <5	3000 K	650 lm	8 W
912401483033	RS140B LED6-32-/840 PSR PI6 WH	(0.38, 0.38) SDCM <5	4000 K	650 lm	8 W
912401483039	RS140B LED9-32-/830 PSR PI6 WH	(0.43, 0.40) SDCM <5	3000 K	900 lm	11 W
912401483040	RS140B LED9-32-/840 PSR PI6 WH	(0.38, 0.38) SDCM <5	4000 K	900 lm	11 W
912401483043	RS140B LED12-36-/830 PSR PI6 WH	(0.43, 0.40) SDCM <5	3000 K	1200 lm	15 W
912401483044	RS140B LED12-36-/840 PSR PI6 WH	(0.38, 0.38) SDCM <5	4000 K	1200 lm	15 W
912401483034	RS141B LED6-32-/827 PSR PI6 WH	(0.46, 0.41) SDCM <5	2700 K	650 lm	8 W
912401483035	RS141B LED6-32-/830 PSR PI6 WH	(0.43, 0.40) SDCM <5	3000 K	650 lm	8 W
912401483036	RS141B LED6-32-/840 PSR PI6 WH	(0.38, 0.38) SDCM <5	4000 K	650 lm	8 W
912401483037	RS141B LED9-32-/830 PSR PI6 WH	(0.43, 0.40) SDCM <5	3000 K	900 lm	11 W
912401483038	RS141B LED9-32-/840 PSR PI6 WH	(0.38, 0.38) SDCM <5	4000 K	900 lm	11 W
912401483041	RS141B LED12-36-/830 PSR PI6 WH	(0.43, 0.40) SDCM <5	3000 K	1200 lm	15 W

Order Code	Full Product Name	Initial chromaticity	Init. Corr. Color Temperature	Initial luminous flux	Initial input power
912401483042	RS141B LED12-36-/840 PSR PI6 WH	(0.38, 0.38) SDCM <5	4000 K	1200 lm	15 W
912401483053	RS140B LED12-36-/830 PSR PI6 ALU	(0.43, 0.40) SDCM <5	3000 K	1200 lm	15 W
912401483054	RS140B LED12-36-/840 PSR PI6 ALU	(0.38, 0.38) SDCM <5	4000 K	1200 lm	15 W
912401483045	RS140B LED6-32-/827 PSR PI6 ALU	(0.46, 0.41) SDCM <5	2700 K	650 lm	8 W
912401483046	RS140B LED6-32-/830 PSR PI6 ALU	(0.43, 0.40) SDCM <5	3000 K	650 lm	8 W
912401483047	RS140B LED6-32-/840 PSR PI6 ALU	(0.38, 0.38) SDCM <5	4000 K	650 lm	8 W
912401483051	RS140B LED9-32-/830 PSR PI6 ALU	(0.43, 0.40) SDCM <5	3000 K	900 lm	11 W
912401483052	RS140B LED9-32-/840 PSR PI6 ALU	(0.38, 0.38) SDCM <5	4000 K	900 lm	11 W
912401483048	RS141B LED6-32-/827 PSR PI6 ALU	(0.46, 0.41) SDCM <5	2700 K	650 lm	8 W
912401483049	RS141B LED6-32-/830 PSR PI6 ALU	(0.43, 0.40) SDCM <5	3000 K	650 lm	8 W
912401483050	RS141B LED6-32-/840 PSR PI6 ALU	(0.38, 0.38) SDCM <5	4000 K	650 lm	8 W
912401483119	RS142B LED6-32-/827 PSR PI6 WH FR	(0.46, 0.41) SDCM <5	2700 K	650 lm	8 W
912401483120	RS142B LED6-32-/830 PSR PI6 WH FR	(0.43, 0.40) SDCM <5	3000 K	650 lm	8 W

Mechanical and Housing

Order Code	Full Product Name	Color
912401483031	RS140B LED6-32-/827 PSR PI6 WH	White
912401483032	RS140B LED6-32-/830 PSR PI6 WH	White
912401483033	RS140B LED6-32-/840 PSR PI6 WH	White
912401483039	RS140B LED9-32-/830 PSR PI6 WH	White
912401483040	RS140B LED9-32-/840 PSR PI6 WH	White
912401483043	RS140B LED12-36-/830 PSR PI6 WH	White
912401483044	RS140B LED12-36-/840 PSR PI6 WH	White

Order Code	Full Product Name	Color
912401483034	RS141B LED6-32-/827 PSR PI6 WH	White
912401483035	RS141B LED6-32-/830 PSR PI6 WH	White
912401483036	RS141B LED6-32-/840 PSR PI6 WH	White
912401483037	RS141B LED9-32-/830 PSR PI6 WH	White
912401483038	RS141B LED9-32-/840 PSR PI6 WH	White
912401483041	RS141B LED12-36-/830 PSR PI6 WH	White
912401483042	RS141B LED12-36-/840 PSR PI6 WH	White

CoreLine Recessed Spot

Order Code	Full Product Name	Color
912401483053	RS140B LED12-36-/830 PSR PI6 ALU	Aluminum
912401483054	RS140B LED12-36-/840 PSR PI6 ALU	Aluminum
912401483045	RS140B LED6-32-/827 PSR PI6 ALU	Aluminum
912401483046	RS140B LED6-32-/830 PSR PI6 ALU	Aluminum
912401483047	RS140B LED6-32-/840 PSR PI6 ALU	Aluminum
912401483051	RS140B LED9-32-/830 PSR PI6 ALU	Aluminum

Order Code	Full Product Name	Color
912401483052	RS140B LED9-32-/840 PSR PI6 ALU	Aluminum
912401483048	RS141B LED6-32-/827 PSR PI6 ALU	Aluminum
912401483049	RS141B LED6-32-/830 PSR PI6 ALU	Aluminum
912401483050	RS141B LED6-32-/840 PSR PI6 ALU	Aluminum
912401483119	RS142B LED6-32-/827 PSR PI6 WH FR	White
912401483120	RS142B LED6-32-/830 PSR PI6 WH FR	White

