



ArchiPoint iColour Powercore – daylight-visible LED point with intelligent colour light

ArchiPoint iColor Powercore

ArchiPoint iColour Powercore is a daylight-visible, exterior-rated LED point of light ideally suited for a range of direct-view and beacon applications, as well as for accent applications such as path and marker lighting. These versatile low-profile fixtures display large-scale video, graphics, and intricately designed dynamic effects in a host of settings, including architectural, retail, and entertainment installations. ArchiPoint iColour Powercore offers high-intensity output with the efficiency and cost-effectiveness of Powercore technology in a rugged aluminum housing. Powercore delivers line voltage and data to fixtures over a single cable, dramatically simplifying installation and lowering total system cost.

Benefits

- Easily visible in brightly lit urban environments and daylight – even in direct sunlight
- Integrated Powercore technology
- Multiple lens options

Features

- Outputs over 7,000 nits of intelligent colour light, perfect for large-scale video, dynamic effects, and other direct-view applications
- Weatherproof, low-profile housing
- Clear flat lens for brilliant illumination and path lighting
- Translucent dome lens for direct-view applications, providing an exceptional viewing angle of 180° and uniform colour mixing
- Multiple mounting base options

ArchiPoint iColor Powercore

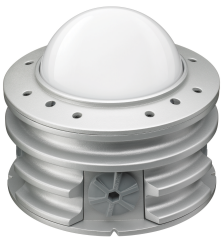
Application

- Architectural
- Retail
- Entertainment

Versions



Product details



ArchiPoint iColor Powercore Detail
Photo Dome Lens

