



# ClearFlood Large – The best solution for 1:1 retrofit

## ClearFlood Large

ClearFlood Large is designed to meet the requirements of a wide range of floodlighting applications. It also includes all the necessary control features and interfaces to make it future-proof and even more efficient. ClearFlood Large lets you choose the exact number of lumens you need for your application. Incorporating extremely high-efficiency optics and state-of-the-art LEDs, it is a highly competitive solution offering an outstanding lux/euro ratio and energy savings of up to 40% (without the use of additional controls). The wide choice of optics ensures maximum application coverage. ClearFlood Large is easy to install – you simply plug it in and select the best option for your needs. Perfect for replacing conventional technology and enabling intelligent lighting control while retaining the same electrical installation and poles.

### Benefits

- Fast payback and low Total Cost of Ownership with energy savings and minimum maintenance costs
- Multiple control options ensure increased efficiency with intelligent lighting
- Combination of lenses and flux options ensures high level of project flexibility

# ClearFlood Large

## Features

- Designed for 1:1 retrofit up to 1000 W HID
- Wide range of lumen packages between 30 klm and 65 klm
- Gear and PCB easy to replace
- Wide range of control options, such as CityTouch Ready, CLO, DALI, 1-10 V
- LEDs and optics deliver highest level of efficiency
- Components are 100% Philips
- Wide choice of optics to suit all applications: 3x Asymmetrical, 3x Road, 3x Symmetrical, versions with louver (optional)
- Optimized architecture for 4 kV surge (optional 10 kV), IP66 and IK08 protection

## Application

- Airports
- Harbors
- Large recreational sports facilities
- Industrial areas
- Roundabouts and motorway junctions

## Specifications

<b>Type</b>	BVP651:LEDxxx-4S BVP651i: additional options via a configurator
<b>Light source</b>	Integral LED-module
<b>Power</b>	Up to 553 W (+/- 11%) all CCT
<b>Luminous flux</b>	Up to 62,000 lm (NW/CW) (-/+7%)
<b>Luminaire efficacy</b>	Up to 130 lm/W (NW/CW)
<b>Correlated Colour</b>	3,000, 4,000 or 5,700 K
<b>Temperature</b>	
<b>Colour Rendering Index</b>	80 / 70 / 70
<b>Lumen maintenance at median useful life* 100,000 h</b>	up to L93
<b>Control gear failure rate at median useful life 100,000 h</b>	10%
<b>Performance Ambient Temperature Tq</b>	+25 °C
<b>Operating temperature range</b>	-40 to +45 °C
<b>Driver</b>	Built-in (self-ballasted LED-module) – NTC
<b>Mains voltage</b>	220-240 V AC / 50-60 Hz
<b>Power factor</b>	>0.95
<b>Surge protection</b>	4 kV as standard, 10 kV optional
<b>Dimming</b>	Dimming via external communication (DALI) Dimming via mains voltage (AmpDim) Dimming via DynaDimmer (5 steps) Constant Light Output (CLO) CityTouch-ready; GPRS antenna
<b>Control system input</b>	DALI
<b>Options</b>	Class I or II (MSP) Marine salt protection – 1,000 h (SPO) Swimming Pool Protection

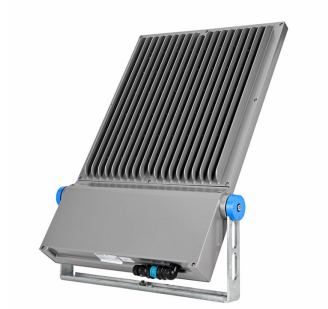
<b>Optic</b>	Asymmetrical, symmetrical and road optics
<b>Optical element</b>	Louvre for limited backlight cut-off (BL1 and BL2)
<b>Optical cover</b>	Clear tempered flat glass
<b>Material</b>	Die-cast aluminium
<b>Colour</b>	RAL9007 matt
<b>Connection</b>	Mains power via a waterproof connector (supplied) mounted on the projector and accepting cable diameters between 10 to 14 mm External control command DALI (D9), via the supplied waterproof connector (same as the mains supply) accepting cable diameters from 10 mm to 14 mm, or cable entry via 2 waterproof connectors supplied (in DALI/DALI out)
<b>Maintenance</b>	No internal cleaning required Direct access to LED engine modules and drivers Ballast can be replaced on request Spare part list available (glass, optics, bracket, protractor scale, PCB LED, connector)
<b>Installation</b>	U-shaped mounting bracket with a foot-print suitable for 3-point fixation by means of M20 bolts Vertical aiming from the horizontal: -90° / +90°, memory cap Standing-up or hanging-down mounting /U-bracket stirrup with standard nuts and bolts Protractor scale with intervals of 5°, memory cap Ready for CityTouch (based on the DALI protocol) with an external tray fixed on the bracket Projected area in horizontal position: at 0° 0.05 SCx: at 90° : 0.41 m², at 0° : 0.05 m², at 15° : 0.13 m² Max adjustment from the horizontal: -170 to +170°
<b>Cable gland</b>	External IP67 waterproof, plug-in connector (5-pin)
<b>Remarks</b>	CE, ENEC, RoHS, VDE-Ball proof

# ClearFlood Large

## Versions



## Product details



Clearflood Large CityTouch-DPP.jpg

# ClearFlood Large

## Approval and Application

Mech. impact protection code	IK08
Surge Protection (Common/Differential)	Luminaire surge protection level up to 4 kV differential mode and 4 kV common mode

## Controls and Dimming

Dimmable	No
----------	----

## General Information

CE mark	CE mark
Light source colour	740 neutral white
Optical cover/lens type	FG
Driver included	Yes
Flammability mark	F
Light source replaceable	Yes
Number of gear units	2 units
Product Family Code	BVP651

## Initial Performance (IEC Compliant)

Init. Corr. Colour Temperature	4000 K
Init. Colour Rendering Index	≥70

## Light Technical

Standard tilt angle side entry	0°
Standard tilt angle posttop	0°
Upward light output ratio	0

## General Information

Order Code	Full Product Name	Luminaire light beam spread	Lamp family code	Optic type
11281300	BVP651 LED750-4S/740 S ALU PSU	70° x 21°	LED750	Symmetrical
11282000	BVP651 LED750-4S/740 OFA52 ALU PSU	39° - 11° x 98°	LED750	Optiflux asymmetrical axis angle 52°
11283700	BVP651 LED750-4S/740 DM10 ALU PSU	157° x 111°	LED750	Distribution medium 10
11284400	BVP651 LED750-4S/740 DW10 ALU PSU	52° - 7° x 151°	LED750	Distribution wide 10
11285100	BVP651 LED750-4S/740 DX10 ALU PSU	20° - 4° x 150°	LED750	Distribution extra-wide 10
11286800	BVP651 LED750-4S/740 DX50 ALU PSU	17° - 5° x 132°	LED750	Distribution extra wide 50
11287500	BVP651 LED750-4S/740 DX51 ALU PSU	14° - 5° x 132°	LED750	Distribution extra wide 51
12902600	BVP651 LED450-4S/740 DX60 ALU PSU	8° - 26° x 82°	LED450	Distribution extra-wide 60
12903300	BVP651 LED500-4S/740 DX60 ALU PSU	8° - 26° x 82°	LED500	Distribution extra-wide 60
12904000	BVP651 LED550-4S/740 DX60 ALU PSU	8° - 26° x 82°	LED550	Distribution extra-wide 60
12905700	BVP651 LED600-4S/740 DX60 ALU PSU	8° - 26° x 82°	LED600	Distribution extra-wide 60
12906400	BVP651 LED650-4S/740 DX60 ALU PSU	8° - 26° x 82°	LED650	Distribution extra-wide 60
12907100	BVP651 LED700-4S/740 DX60 ALU PSU	8° - 26° x 82°	LED700	Distribution extra-wide 60
12908800	BVP651 LED750-4S/740 DX60 ALU PSU	8° - 26° x 82°	LED750	Distribution extra-wide 60

## Initial Performance (IEC Compliant)

Order Code	Full Product Name	Initial luminous flux
11281300	BVP651 LED750-4S/740 S ALU PSU	63840 lm
11282000	BVP651 LED750-4S/740 OFA52 ALU PSU	63080 lm
11283700	BVP651 LED750-4S/740 DM10 ALU PSU	62320 lm
11284400	BVP651 LED750-4S/740 DW10 ALU PSU	63080 lm
11285100	BVP651 LED750-4S/740 DX10 ALU PSU	60040 lm
11286800	BVP651 LED750-4S/740 DX50 ALU PSU	60800 lm
11287500	BVP651 LED750-4S/740 DX51 ALU PSU	37240 lm

Order Code	Full Product Name	Initial luminous flux
12902600	BVP651 LED450-4S/740 DX60 ALU PSU	40050 lm
12903300	BVP651 LED500-4S/740 DX60 ALU PSU	44000 lm
12904000	BVP651 LED550-4S/740 DX60 ALU PSU	49280 lm
12905700	BVP651 LED600-4S/740 DX60 ALU PSU	52800 lm
12906400	BVP651 LED650-4S/740 DX60 ALU PSU	58080 lm
12907100	BVP651 LED700-4S/740 DX60 ALU PSU	61600 lm
12908800	BVP651 LED750-4S/740 DX60 ALU PSU	66120 lm

## Mechanical and Housing

Order Code	Full Product Name	Colour
11281300	BVP651 LED750-4S/740 S ALU PSU	Grey
11282000	BVP651 LED750-4S/740 OFA52 ALU PSU	Grey
11283700	BVP651 LED750-4S/740 DM10 ALU PSU	Grey
11284400	BVP651 LED750-4S/740 DW10 ALU PSU	Grey
11285100	BVP651 LED750-4S/740 DX10 ALU PSU	Grey
11286800	BVP651 LED750-4S/740 DX50 ALU PSU	Aluminium

Order Code	Full Product Name	Colour
11287500	BVP651 LED750-4S/740 DX51 ALU PSU	Grey
12902600	BVP651 LED450-4S/740 DX60 ALU PSU	Grey
12903300	BVP651 LED500-4S/740 DX60 ALU PSU	Grey
12904000	BVP651 LED550-4S/740 DX60 ALU PSU	Grey
12905700	BVP651 LED600-4S/740 DX60 ALU PSU	Grey
12906400	BVP651 LED650-4S/740 DX60 ALU PSU	Grey

## ClearFlood Large

Order Code	Full Product Name	Colour
12907100	BVP651 LED700-4S/740 DX60 ALU PSU	Grey

Order Code	Full Product Name	Colour
12908800	BVP651 LED750-4S/740 DX60 ALU PSU	Grey

