



# GreenPerform Highbay G3 - Excellent light quality, maximum energy savings.

## GreenPerform Highbay G3

Following the successful introduction of the GreenPerform Highbay G2 in 2013, while continue providing the superior light quality, long service lifetime, reduced energy consumption and less maintenance in the switch on-off (PSU) and Dali dimmable (PSD) versions, the new generation Highbay seamlessly integrates state-of-the-art LED lighting with an easy-to-use and reliable wireless ZIGBEE control solution (ACW) and simple movement detection solution (PIR). In the ACW version products, when the situation on the work floor changes, settings such as dimming levels and timing can be changed wirelessly by the end-users themselves. Luminaires can be combined in groups across the layout, and re-zoning them does not require a hardware change, thus minimizing commissioning costs. The system delivers savings over and above the actual efficiency of the LEDs and is future-proof. In the PIR version products, when there has no movement detected after 15 minutes, the lighting will dimming down to 25% of the lumen output, which helps to maximum your energy saving in a simple way. Easy to understand, easy to design-in, and easy to use, GreenPerform Highbay G3 is a smart way to light up your business.

# GreenPerform Highbay G3

## Benefits

- High energy saving up to 65%~88% comparing to HPI-P system
- Superb light quality
- Easy installation and maintenance
- Future-proof system: wireless adjustment of lighting settings and fast re-zoning if use of space changes (ACW versions)
- Light for need: Lighting dimming down to 25% after 15 minutes if no movement detected (PIR versions)

## Features

- High efficacy: 130 lumens per watt
- Low UGR (NB/20 ~WB/26) and accurate color (CRI> 80)
- Lifetime 50,000 hours with IP65 & IK07 protection
- Super slim design and suits for hook, pipe mounting
- Integrated with 1~10V PIR occupancy and movement based dimming sensor (PIR version)
- Integrated with ZigBee control, movement detection and day harvest sensor (ACW version)

## Application

- General Industry Application: Factory, Warehouse, Distribution center
- Indoor sport hall
- Other high ceiling indoor applications

## Specifications

Ambient Temperature	-30 to +45 °C
	-30 to +50 °C
Beam spread luminaire	100°
Main color of the luminaire	Dark gray
Initial correlated color temperature	4000 K, 6500 K
Initial luminous flux	20000 lm, 29000 lm
Input frequency	50 to 60 Hz
Input voltage	220 to 240 V
Light source color	840 neutral white, 865 cool daylight

Material	Housing: aluminum die-cast
Material other1	Housing: die-cast aluminum: Cover: polycarbonate, flat
Median Useful Life L70B50	50000 h
Median Useful Life L80B50	40000 h
Median Useful Life L90B50	30000 h
Type	BY698P (Fix driver and Dali driver versions)BY698X (1~10V sensor and Dali ZigBee system versions)

## Versions



BY698P LED300



BY698P

# GreenPerform Highbay G3

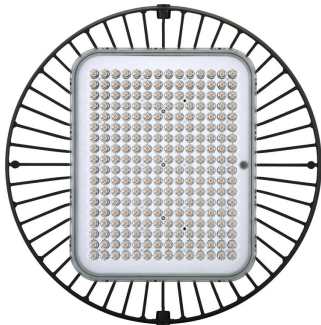
## Product details



GreenPerform Highbay G3  
BY698P Fixed Back



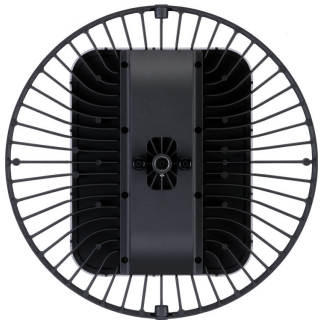
GreenPerform Highbay G3  
BY698P Fixed Side



GreenPerform Highbay G3  
BY698P LED300 Front



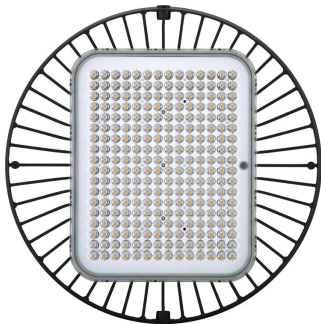
GreenPerform Highbay G3  
BY698P with Bracket



GreenPerform Highbay G3  
BY698P Dali Back



GreenPerform Highbay G3  
BY698P Dali Side



GreenPerform Highbay G3  
BY698P LED200 Front

# GreenPerform Highbay G3

-	
Driver failure rate at 5000 h	0.01 %
<b>Application Conditions</b>	
Suitable for random switching	No
<b>Approval and Application</b>	
Mech. impact protection code	IK07
Ingress protection code	IP65
<b>Operating and Electrical</b>	
Input Voltage	220 to 240 V
<b>General Information</b>	
CE mark	CE mark
Protection class IEC	Safety class I (I)
Optical cover/lens type	PC
Driver included	Yes
Flammability mark	F
Glow-wire test	650/5
Light source replaceable	No
Optic type	WB
Service tag	Yes
<b>Initial Performance (IEC Compliant)</b>	
Init. Color Rendering Index	>80
Initial LED luminaire efficacy	129 lm/W
Luminous flux tolerance	+/-10%
<b>Mechanical and Housing</b>	
Color	Dark gray
<b>Over Time Performance (IEC Compliant)</b>	
Median useful life L80B50	40000 h
Median useful life L90B50	30000 h

## Application Conditions

Order Code	Full Product Name	Ambient temperature range	Maximum dim level
911401513431	BY698P LED200 CW PSU WB	-30 to +45 °C	-
911401829397	BY698P LED300/CW PSD WB L3000 EN	-30 to +50 °C	5% (1 to 10 V)
911401829897	BY698P LED300/CW PSU WB L3000 EN	-30 to +50 °C	-
911401830097	BY698P LED300/NW PSU WB L3000 EN	-30 to +50 °C	-

## Controls and Dimming

Order Code	Full Product Name	Dimmable
911401513431	BY698P LED200 CW PSU WB	No
911401829397	BY698P LED300/CW PSD WB L3000 EN	Yes

Order Code	Full Product Name	Dimmable
911401829897	BY698P LED300/CW PSU WB L3000 EN	No
911401830097	BY698P LED300/NW PSU WB L3000 EN	No

## General Information

Order Code	Full Product Name	Number of gear units
911401513431	BY698P LED200 CW PSU WB	1 unit
911401829397	BY698P LED300/CW PSD WB L3000 EN	2 units

Order Code	Full Product Name	Number of gear units
911401829897	BY698P LED300/CW PSU WB L3000 EN	2 units
911401830097	BY698P LED300/NW PSU WB L3000 EN	2 units

## Initial Performance (IEC Compliant)

## GreenPerform Highbay G3

Order Code	Full Product Name	Initial chromaticity	Init. Corr. Color Temperature	Initial luminous flux	Initial input power
911401513431	BY698P LED200 CW PSU WB	(0.313.0.324)SDCM<5	6500 K	20000 lm	155 W
911401829397	BY698P LED300/CW PSD WB L3000 EN	(0.313.0.324)SDCM<5	6500 K	29000 lm	225 W
911401829897	BY698P LED300/CW	(0.313.0.324)SDCM<5	6500 K	29000 lm	225 W

Order Code	Full Product Name	Initial chromaticity	Init. Corr. Color Temperature	Initial luminous flux	Initial input power
	PSU WB L3000 EN				
911401830097	BY698P LED300/N W PSU WB L3000 EN	(0.38.0.38)SDCM<5	4000 K	29000 lm	225 W

