



# GreenPerform Highbay G3 - Excellent light quality, maximum energy savings.

## GreenPerform Highbay G3

Following the successful introduction of the GreenPerform Highbay G2 in 2013, while continue providing the superior light quality, long service lifetime, reduced energy consumption and less maintenance in the switch on-off (PSU) and Dali dimmable (PSD) versions, the new generation Highbay seamlessly integrates state-of-the-art LED lighting with an easy-to-use and reliable wireless ZIGBEE control solution (ACW) and simple movement detection solution (PIR). In the ACW version products, when the situation on the work floor changes, settings such as dimming levels and timing can be changed wirelessly by the end-users themselves. Luminaires can be combined in groups across the layout, and re-zoning them does not require a hardware change, thus minimising commissioning costs. The system delivers savings over and above the actual efficiency of the LEDs and is future-proof. In the PIR version products, when there has no movement detected after 15 minutes, the lighting will dimming down to 25% of the lumen output, which helps to maximum your energy saving in a simple way. Easy to understand, easy to design-in, and easy to use, GreenPerform Highbay G3 is a smart way to light up your business.

# GreenPerform Highbay G3

## Benefits

- High energy saving up to 65%~88% comparing to HPI-P system
- Superb light quality
- Easy installation and maintenance
- Future-proof system: wireless adjustment of lighting settings and fast re-zoning if use of space changes (ACW versions)
- Light for need: Lighting dimming down to 25% after 15 minutes if no movement detected (PIR versions)

## Features

- High efficacy: 130 lumens per watt
- Low UGR (NB/20 ~WB/26) and accurate colour (CRI> 80)
- Lifetime 50,000 hours with IP65 & IK07 protection
- Super slim design and suits for hook, pipe mounting
- Integrated with 1~10V PIR occupancy and movement based dimming sensor (PIR version)
- Integrated with ZigBee control, movement detection and day harvest sensor (ACW version)

## Application

- General Industry Application: Factory, Warehouse, Distribution center
- Indoor sport hall
- Other high ceiling indoor applications

## Specifications

<b>Ambient Temperature</b>	-30 to +50 °C
<b>Beam spread luminaire</b>	100°
<b>Main colour of the luminaire</b>	Dark Grey Dark Grey (Pantone 8405C)
<b>Initial correlated colour temperature</b>	4000 K, 6500 K
<b>Initial luminous flux</b>	29000 lm
<b>Input frequency</b>	50 to 60 Hz
<b>Input voltage</b>	220 to 240 V
<b>Light source colour</b>	840 neutral white, 865 cool daylight

<b>Material</b>	Housing: aluminum die-cast
<b>Material other1</b>	Housing: die-cast aluminium: Cover: polycarbonate, flat
<b>Median Useful Life L70B50</b>	50000 h
<b>Median Useful Life L80B50</b>	40000 h
<b>Median Useful Life L90B50</b>	30000 h
<b>Type</b>	BY698P (Fix driver and Dali driver versions)BY698X (1~10V sensor and Dali ZigBee system versions)

## Versions



GreenPerform Highbay G3

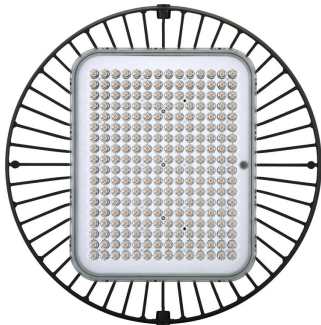
Product details



GreenPerform Highbay G3  
BY698P Fixed Back



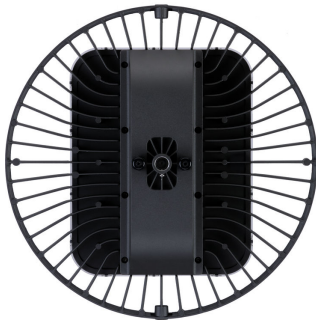
GreenPerform Highbay G3  
BY698P Fixed Side



GreenPerform Highbay G3  
BY698P LED300 Front



GreenPerform Highbay G3  
BY698P with Bracket



GreenPerform Highbay G3  
BY698P Dali Back



GreenPerform Highbay G3  
BY698P Dali Side

-	
Driver failure rate at 5,000 hours	0.01 %
<b>Application Conditions</b>	
Ambient temperature range	-30 to +50 °C
Suitable for random switching	No
<b>Approval and Application</b>	
Mech. impact protection code	IK07
Ingress protection code	IP65
<b>Operating and Electrical</b>	
Input Voltage	220 to 240 V
<b>General Information</b>	
CE mark	CE mark
Protection class IEC	Safety class I (I)
Optical cover/lens type	PC
Driver included	Yes
Flammability mark	F
Glow-wire test	650/5
Light source replaceable	No
Number of gear units	2 units
Optic type	WB
<b>Initial Performance (IEC Compliant)</b>	
Init. Colour rendering index	>80
Initial LED luminaire efficacy	129 lm/W
Initial luminous flux	29000 lm
Luminous flux tolerance	+/-10%
Initial input power	225 W
<b>Mechanical and Housing</b>	
Colour	Dark Grey
<b>Over Time Performance (IEC Compliant)</b>	
Median useful life L80B50	40000 h
Median useful life L90B50	30000 h

## Application Conditions

Order Code	Full Product Name	Maximum dimming level
911401829397	BY698P LED300/CW PSD WB L3000 EN	5% (1 to 10 V)
911401829897	BY698P LED300/CW PSU WB L3000 EN	-
911401830097	BY698P LED300/NW PSU WB L3000 EN	-

## Controls and Dimming

Order Code	Full Product Name	Dimmable
911401829397	BY698P LED300/CW PSD WB L3000 EN	Yes
911401829897	BY698P LED300/CW PSU WB L3000 EN	No

Order Code	Full Product Name	Dimmable
911401830097	BY698P LED300/NW PSU WB L3000 EN	No

## Initial Performance (IEC Compliant)

Order Code	Full Product Name	Initial chromaticity	Init. Corr. Colour Temperature
911401829397	BY698P LED300/CW PSD WB L3000 EN	(0.313.0.324)SDCM<5	6500 K
911401829897	BY698P LED300/CW PSU WB L3000 EN	(0.313.0.324)SDCM<5	6500 K

Order Code	Full Product Name	Initial chromaticity	Init. Corr. Colour Temperature
911401830097	BY698P LED300/NW PSU WB L3000 EN	(0.38.0.38)SDCM<5	4000 K

## GreenPerform Highbay G3

