



Product Description

Plusline Small

Mains-voltage linear lamp giving white halogen light

Benefits

- Bright halogen light
- Long lifetime

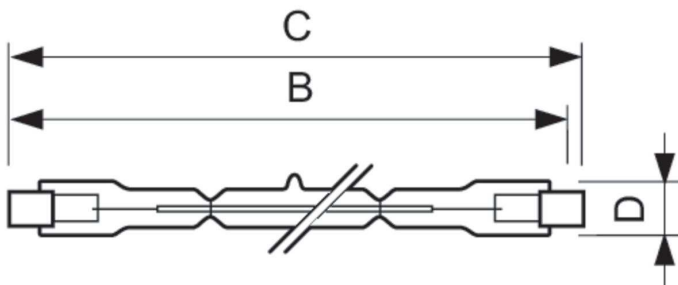
Features

- Clear tubular quartz bulb
- Reinforced filament supports for maximum safety and shock resistance resulting in longer lifetime
- Two arc-preventing fuses for greater safety
- Excellent colour rendering
- Constant light output during life

Application

- Typically used in shop lighting applications
- Indoor: homes, offices, shops and museums
- Outdoor: billboards, car parks, security lighting and construction sites

Dimensional drawing



Product	D (max)	B (max)	B	B (min)	C (max)
Plusline S 300W R7s 230V 1CT/ 10X10F	12 mm	115.8 mm	114.2 mm	112.6 mm	117.6 mm
Plusline S 500W R7s 230V 1CT/ 10X10F	12 mm	115.8 mm	114.2 mm	112.6 mm	117.6 mm

Plusline Small

General Information

Rated Lifetime (Hours)	2.000 hour(s)
Nominal lifetime	2.000 hour(s)
Operating Position	UNIVERSAL

Light Technical

Correlated Color Temperature (Nom)	2900 K
Color rendering index (CRI)	100

Operating and Electrical

Voltage (Nom)	230 V
Starting Time (Nom)	0.0 s

Controls and Dimming

Dimmable	Yes
----------	-----

Mechanical and Housing

Bulb Finish	Clear
Bulb Shape	T3

General Information

Order Code	Full Product Name	Cap-Base
80895700	Plusline S 300W R7s 230V 1CT/10X10F	R7s
80901500	Plusline S 500W R7s 230V 1CT/10X10F	R7S

Light Technical

Order Code	Full Product Name	Luminous Efficacy (rated) (Nom)	Luminous Flux
80895700	Plusline S 300W R7s 230V 1CT/10X10F	17 lm/W	5,114 lm

Order Code	Full Product Name	Luminous Efficacy (rated) (Nom)	Luminous Flux
80901500	Plusline S 500W R7s 230V 1CT/10X10F	19.3 lm/W	9,660 lm

Operating and Electrical

Order Code	Full Product Name	Lamp Current (Nom)	Power Consumption
80895700	Plusline S 300W R7s 230V 1CT/10X10F	1.3 A	300 W

Order Code	Full Product Name	Lamp Current (Nom)	Power Consumption
80901500	Plusline S 500W R7s 230V 1CT/10X10F	2.17 A	500 W

