



# Product Description

## Plusline Small

Mains-voltage linear lamp giving white halogen light

### Benefits

- Bright halogen light
- Long lifetime

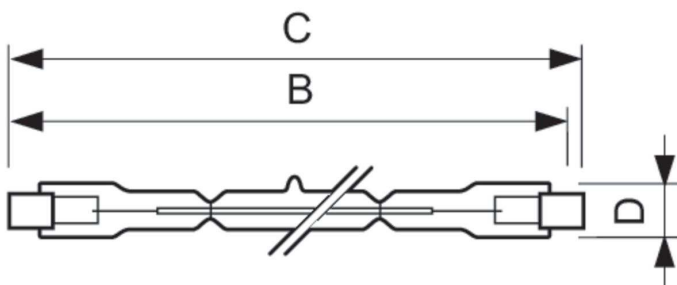
### Features

- Clear tubular quartz bulb
- Reinforced filament supports for maximum safety and shock resistance resulting in longer lifetime
- Two arc-preventing fuses for greater safety
- Excellent colour rendering
- Constant light output during life

### Application

- Typically used in shop lighting applications
- Indoor: homes, offices, shops and museums
- Outdoor: billboards, car parks, security lighting and construction sites

### Dimensional drawing



Product	D (max)	B (max)	B	B (min)	C (max)
Plusline S 300W R7s 230V 1CT/ 10X10F	12 mm	115.8 mm	114.2 mm	112.6 mm	117.6 mm
Plusline S 500W R7s 230V 1CT/ 10X10F	12 mm	115.8 mm	114.2 mm	112.6 mm	117.6 mm

# Plusline Small

General Information	
Rated Lifetime (Hours)	2.000 hour(s)
Nominal lifetime	2.000 hour(s)
Operating Position	UNIVERSAL
Light Technical	
Correlated Color Temperature (Nom)	2900 K
Color rendering index (CRI)	100
Operating and Electrical	
Voltage (Nom)	230 V
Starting Time (Nom)	0.0 s
Controls and Dimming	
Dimmable	Yes
Mechanical and Housing	
Bulb Finish	Clear
Bulb Shape	T3

## General Information

Order Code	Full Product Name	Cap-Base
924735444201	Plusline S 300W R7s 230V 1CT/10X10F	R7s
924735544201	Plusline S 500W R7s 230V 1CT/10X10F	R7S

## Light Technical

Order Code	Full Product Name	Luminous Efficacy (rated) (Nom)	Luminous Flux
924735444201	Plusline S 300W R7s 230V 1CT/ 10X10F	17 lm/W	5,114 lm

Order Code	Full Product Name	Luminous Efficacy (rated) (Nom)	Luminous Flux
924735544201	Plusline S 500W R7s 230V 1CT/10X10F	19.3 lm/W	9,660 lm

## Operating and Electrical

Order Code	Full Product Name	Lamp Current (Nom)	Power Consumption
924735444201	Plusline S 300W R7s 230V 1CT/ 10X10F	1.3 A	300 W

Order Code	Full Product Name	Lamp Current (Nom)	Power Consumption
924735544201	Plusline S 500W R7s 230V 1CT/ 10X10F	2.17 A	500 W

