



SmartBalance Tunable White recessed – supporting a general feeling of health and well-being

SmartBalance Tunable White, recessed

SmartBalance Tunable White recessed helps to speed up recovery times and improve patients' sense of well-being during their hospital stay, with no side-effects – and with a clear financial benefit for the health authority. This dynamic lighting solution enables hospitals to provide patient rooms that are more homely and inviting, where the atmosphere can be changed to suit the time of day or the activity being carried out. At the same time, it helps hospital managers to ensure that medical staff remain alert, especially on round-the-clock shifts.

Benefits

- Surface of light combining performance and smart design
- Recreates the natural rhythm of daylight
- Offers patients more choice, and provides high-quality, glare-free work light for staff

Features

- Two drivers and LED boards offering different colors (3000 up to 6500 K)
- Tunable White features with dedicated control system
- Predefined dynamic curves vary color temperature and intensity as a function of time

SmartBalance Tunable White, recessed

Application

- Hospital recovery rooms
- Medical staff rooms
- Hospital corridors
- Nursing homes
- Mental health facilities

Specifications

Type	RC484B (module size 600x600 mm versions) RC486B (module size 625x625 mm versions)
Ceiling type	Exposed T-bar ceiling
Ceiling grid	RC484B: module size in length: 600 mm RC486B: module size in length: 625 mm
Light source	Non-replaceable LED module
Power	t.b.d.
Beam angle	t.b.d.
Luminous flux	t.b.d.
Correlated Color	3000, 4000, 6500 K
Temperature	
Color Rendering Index	> 80
Median useful life L70B50	70,000 hours
Median useful life L80B50	50,000 hours
Median useful life L90B50	25,000 hours
Driver failure rate	1% per 5000 hours

Average ambient temperature	+25 °C
Operating temperature range	+10 to +40 °C
Driver	Built-in
Mains voltage	220-240 V / 50-60 Hz
Dimming	Integrated
Controls system input	t.b.d.
Optic	Micro-lens optic, clear (ACC-MLO)
Material	Housing: t.b.d. Optic: acrylate Exit window: PMMA
Color	White (WH, comparable to RAL 9003)
Connection	Push-in connector (PI)
Maintenance	Optical module sealed for life; no internal cleaning required
Installation	Individual; lay-in in exposed ceiling grids

Versions



SmartBalance Tunable White RC484B
recessed luminaire (module size 600)



SmartBalance Tunable White RC486B
recessed luminaire (module size 625)

SmartBalance Tunable White, recessed

Product details

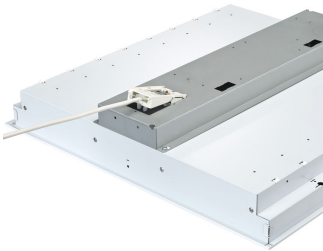
SmartBalance Tunable White,
recessed RC484B W60L60 DP



SmartBalance Tunable White,
recessed RC484B W60L60 DP



SmartBalance Tunable White,
recessed RC484B W60L60 DP



SmartBalance Tunable White,
recessed RC484B W60L60 DP



SmartBalance Tunable White,
recessed RC486B W62L62 DP



SmartBalance Tunable White, recessed

Application Conditions

Ambient temperature range	+10 to +40 °C
Maximum dim level	1%
Suitable for random switching	No

Approval and Application

Mech. impact protection code	IK02
Ingress protection code	IP40

Controls and Dimming

Dimmable	Yes
----------	-----

Operating and Electrical

Input Voltage	220-240 V
---------------	-----------

General Information

Cap-Base	-
CE mark	CE mark
Protection class IEC	Safety class I (I)
Optical cover/lens type	ACC-MLO
Driver included	Yes
Emergency lighting	No
ENEC mark	ENEC plus mark
Flammability mark	F
Gear	-
Glow-wire test	650/5
Lamp family code	LED78S
Embedded control	No
Light source replaceable	No
Number of gear units	2 units
Number of light sources	1
Optic type	No
Optical element	No
Product Family Code	RC484B
UL mark	-

Initial Performance (IEC Compliant)

Initial chromaticy	(0.31, 0.32) SDCM <3 to (0.43, 0.40) SDCM <3
Init. Corr. Colour Temperature	3100 to 6700 K
Init. Colour Rendering Index	≥80
Initial luminous flux	7800 lm
Luminous flux tolerance	+/-10%

Mechanical and Housing

Colour	White
--------	-------

Initial Performance (IEC Compliant)

Order Code	Full Product Name	Initial LED luminaire efficacy	Initial input power
87074700	RC484B LED78S/TWH PSD W60L60 VPC PIP	90 lm/W	87 W
87075400	RC486B LED78S/TWH PSD W62L62 VPC PIP	92 lm/W	85 W

Mechanical and Housing

Order Code	Full Product Name	Geometry	Order Code	Full Product Name	Geometry
87074700	RC484B LED78S/TWH PSD W60L60 VPC PIP	W60L60	87075400	RC486B LED78S/TWH PSD W62L62 VPC PIP	W62L62

SmartBalance Tunable White, recessed

