



SmartBalance Tunable White recessed – supporting a general feeling of health and well-being

SmartBalance Tunable White, recessed

SmartBalance Tunable White recessed improves patients' sense of well-being during their hospital stay.. This dynamic lighting solution enables hospitals to provide patient rooms that are more homely and inviting, where the atmosphere can be changed to suit the time of day or the activity being carried out. At the same time, it helps hospital managers to ensure that medical staff remain alert, especially on round-the-clock shifts.

Benefits

- Surface of light combining performance and smart design
- Offers patients more choice, and provides high-quality, glare-free work light for staff

Features

- Two drivers and LED boards offering different colors (3000 up to 6500 K)
- Tunable White features with dedicated control system
- Predefined dynamic curves vary color temperature and intensity as a function of time

Application

- Hospital recovery rooms
- Medical staff rooms
- Hospital corridors
- Nursing homes
- Mental health facilities

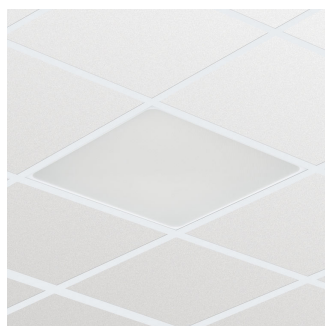
SmartBalance Tunable White, recessed

Specifications

Type	RC484B (module size 600x600 mm versions)
	RC486B (module size 625x625 mm versions)
Ceiling type	Exposed T-bar ceiling
Ceiling grid	RC484B: module size in length: 600 mm
	RC486B: module size in length: 625 mm
Light source	Non-replaceable LED module
Power	49 W
Beam angle	90°
Luminous flux	4000 to 4200 lm
Correlated Color Temperature	3000-6500 K
Color Rendering Index	> 80
Lumen maintenance at median useful life* 50000 h	L80
Control gear failure rate at median useful life 50000 h	5%

Performance Ambient Temperature Tq	+25 °C
Operating temperature range	+10 to +40 °C
Driver	Built-in
Mains voltage	220-240 V / 50-60 Hz
Dimming	Integrated
Controls system input	t.b.d.
Optic	Micro-lens optic, clear (ACC-MLO)
Material	Housing: plastic or zinc-coated steel
	Optic: acrylate
	Exit window: PMMA
Color	White (WH, comparable to RAL 9003)
Connection	Push-in connector (PI)
Maintenance	Optical module sealed for life; no internal cleaning required
Installation	Individual; lay-in in exposed ceiling grids
	UGR 17

Versions



SmartBalance Tunable White RC484B
recessed luminaire (module size 600)



SmartBalance Tunable White RC486B
recessed luminaire (module size 625)

Product details



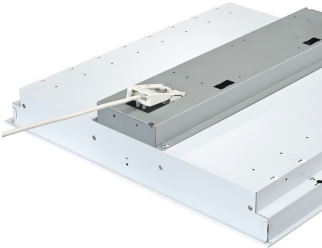
SmartBalance Tunable White RC484B
recessed luminaire (module size 600)



Rounded outer masking and slim rim
design

SmartBalance Tunable White, recessed

Product details



Connectors for easy installation



Outer masking



SmartBalance Tunable White RC486B
recessed luminaire (module size 625)

SmartBalance Tunable White, recessed

Application Conditions

Ambient temperature range	+10 to +40 °C
Maximum dim level	1%
Suitable for random switching	No

Approval and Application

Mech. impact protection code	IK02
Ingress protection code	IP40

Controls and Dimming

Dimmable	Yes
----------	-----

Operating and Electrical

Input Voltage	220-240 V
---------------	-----------

General Information

Cap-Base	-
CE mark	CE mark
Protection class IEC	Safety class I
Optical cover/lens type	Acrylate micro-lens optic clear
Driver included	Yes
Emergency lighting	-
ENEC mark	ENEC plus mark
Flammability mark	For mounting on normally flammable surfaces
Gear	-
Glow-wire test	Temperature 650 °C, duration 5 s
Lamp family code	LED78S
Embedded control	-
Light source replaceable	No
Number of gear units	2 units
Number of light sources	1 pc
Optic type	-
Optical element	-
Product Family Code	RC484B
UL mark	-

Initial Performance (IEC Compliant)

Initial chromaticy	(0.31, 0.32) SDCM <3 to (0.43, 0.40) SDCM <3
Init. Corr. Color Temperature	3100 to 6700 K
Init. Color Rendering Index	≥80
Initial luminous flux	7800 lm
Luminous flux tolerance	+/-10%

Mechanical and Housing

Color	White
-------	-------

Initial Performance (IEC Compliant)

Order Code	Full Product Name	Initial LED luminaire efficacy	Initial input power
910502038503	RC484B LED78S/TWH PSD W60L60 VPC PIP	90 lm/W	87 W
910502038603	RC486B LED78S/TWH PSD W62L62 VPC PIP	92 lm/W	85 W

Mechanical and Housing

SmartBalance Tunable White, recessed

Order Code	Full Product Name	Geometry
910502038503	RC484B LED78S/TWH PSD W60L60 VPC PIP	Width 0.60 m, length 0.60 m

Order Code	Full Product Name	Geometry
910502038603	RC486B LED78S/TWH PSD W62L62 VPC PIP	Width 0.62 m, length 0.62 m

