



SM500T – Ambiance creation made flexible

SM500T

In today's retail market, online sales are growing rapidly and fierce competition is the order of the day. Therefore, retailers want to create experiences that will attract customers to their stores. The SM500T adds atmosphere to your store by introducing contrast and breaking up the traditional continuous light-lines. A variety of beam shapes combined with excellent light quality ensures the merchandise stands out, whilst at the same time enabling you to create your chosen ambience. The SM500T is equipped with power-track connectors. These make it easy to install and to replace or upgrade when re-using existing track. And if your needs change, you can simply adapt the lighting by repositioning the fixtures along the track. This makes the SM500T a truly flexible tool for setting the ambience.

Benefits

- Always your choice of illumination and ambience thanks to the variety of optics
- Thin-design track fixture enables use of power-track systems for low ceilings
- Energy savings as a result of best-in-class lighting performance

Features

- Sparkling, high-quality white LED light
- Wide variety of optics
- Fixture directly aligned when installed, no adjustment needed
- Projectors can easily be added to create accent lighting
- Uses standard adaptors

Application

- General and aisle lighting for food retail and big-box stores

Specifications

Type	SM500T	Light source	Non-replaceable LED module
------	--------	--------------	----------------------------

SM500T

Power	58–61 W
Beam angle	2 x 20°
	2 x 35°
	100, 115 or 130°
Luminous flux	7900 lm
Correlated Color	3000 or 4000 K
Temperature	
Color Rendering Index	> 80
Median useful life	70,000 hours
L70B50	
Median useful life	50,000 hours
L80B50	
Median useful life	25,000 hours
L90B50	
Driver failure rate	1% per 5000 hours

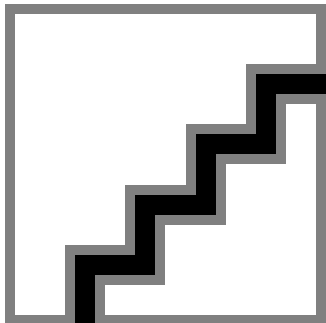
Average ambient temperature	+25 °C
Operating temperature range	+10 to +35 °C
Driver	Built-in
Mains voltage	230 or 240 V / 50–60 Hz
Dimming	DALI dimmable
Material	Housing with integrated driver box: lacquered steel Lens plate: PMMA
Color	Black (RAL9005)
	Grey (RAL9006)
Connection	Track connection: GA100 or GAC600
Maintenance	Sealed for life, no internal cleaning required
Installation	On 3-circuit track

Versions

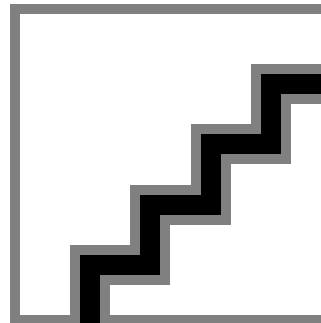


SM500T track luminaire with wide beam, very wide beam or double asymmetric optic

Product details



SM500T WB_VWB_DA20_DA35
Detail photo 07



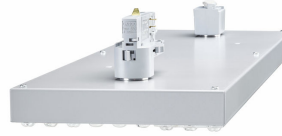
SM500T WB_VWB_DA20_DA35
Detail photo 17

SM500T

Product details



SM500T GR Detail photo 01



SM500T GR Detail photo 10

