



TrueLine, recessed – True line of light: elegant, energy- efficient and compliant with office lighting norms

TrueLine, recessed

Architects need a lighting solution that matches the interior architecture of the property they are working on. They want a light line with an elegant design and very high light levels. Specifiers need luminaires that enable them to save energy while at the same time providing the right level of light, in compliance with office lighting norms. TrueLine, recessed is able to meet both sets of requirements. TrueLine is also available in suspended and surface-mounted versions.

Benefits

- The most uniform exit window
- Extremely high efficacy for a line luminaire
- Luminaire housing dimensions that are most popular with architects

TrueLine, recessed

Features

- Luminous efficacy up to 147 lm/W depending on version
- Complies with office lighting norms
- Standalone and continuous lines
- Suspended version also available
- Direct light
- Homogeneous exit window
- Future-proof: PoE

Application

- General lighting for mid and high-end office buildings

Specifications

Type	SP530P (office-compliant direct-light version)
	SP531P (non-office-compliant direct-light version)
	SP532P (office-compliant direct/indirect-light version)
	SP533P (non-office-compliant direct/indirect-light version)
Light source	Non-replaceable LED module

Power	Office compliant (OC), 1,130 and 1,170 mm, 4,000 K versions:
	10 W (direct 1,500 lm)
	17.5 W (direct 2,500 lm)
	24 W (direct 3,400 lm)
	29 W (direct 4,000 lm)
	15.2 W (direct 1,500 lm, indirect 660 lm, total 2,160 lm)
	25.5 W (direct 2,500 lm, indirect 1,100 lm, total 3,600 lm)
	35.5 W (direct 3,400 lm, indirect 1,550 lm, total 4,950 lm)
	42.5 W (direct 4,000 lm, indirect 1,850 lm, total 5,850 lm)
	Non-office-compliant (NOC) 1,130 and 1,170 mm, 4,000 K versions:
	14.6 W (direct 1,500 lm)
	24.5 W (direct 2,500 lm)
	21 W (direct 1,500 lm, indirect 940 lm, total 2,440 lm)
	36 W (direct 2,500 lm, indirect 1,600 lm, total 4,100 lm)
	Office-compliant (OC) 1,410 and 1,450 mm, 4,000 K versions:
	12.4 W (direct 1,900 lm)
	21.5 W (direct 3,100 lm)
	32 W (direct 4,300 lm)
	38.5 W (direct 5,000 lm)
	19.2 W (direct 1,900 lm, indirect 1,000 lm, total 2,900 lm)
	34 W (direct 3,100 lm, indirect 1,650 lm, total 4,750 lm)
	50 W (direct 4,300 lm, indirect 2,300 lm, total 6,600 lm)
	60 W (direct 5,000 lm, indirect 2,700 lm, total 7,700 lm)
	Non-office-compliant (OC) 1,410 and 1,450 mm, 4,000 K versions:
	17.8 W (direct 1,900 lm)
	32 W (direct 3,100 lm)
	29 W (direct 1,900 lm, indirect 1,400 lm, total 3,300 lm)
	51 W (direct 3,100 lm, indirect 2,300 lm, total 5,400 lm)
	Office-compliant (OC) 1,130 and 1,170 mm, 3,000 K versions:
	10.6 W (direct 1,500 lm)
	18.2 W (direct 2,500 lm)
	25.5 W (direct 3,400 lm)
	30.5 W (direct 4,000 lm)
	16 W (direct 1,500, indirect 660, total 2,160 lm)
	26.5 W (direct 2,500, indirect 1,100, total 3,600 lm)
	37.5 W (direct 3,400, indirect 1,550, total 4,950 lm)

TrueLine, recessed

	44.5 W (direct 4,000, indirect 1,850, total 5,850 lm)
	Non-office-compliant (NOC) 1,130 and 1,170 mm, 3,000 K:
	15.6 W (direct 1,500 lm)
	26 W (direct 2,500 lm)
	22 W (direct 1,500 lm, indirect 940 lm, total 2,440 lm)
	38.5 W (direct 2,500 lm, indirect 1,600 lm, total 4,100 lm)
	Office-compliant (OC) 1,410 and 1,450 mm, 3,000 K versions:
	13 W (direct 1,900 lm)
	23 W (direct 3,100 lm)
	34 W (direct 4,300 lm)
	40.5 W (direct 5,000 lm)
	20 W (direct 1,900 lm, indirect 1,000 lm, total 2,900 lm)
	36 W (direct 3,100 lm, indirect 1,650 lm, total 4,750 lm)
	53 W (direct 4,300 lm, indirect 2,300 lm, total 6,600 lm)
	64 W (direct 5,000 lm, indirect 2,700 lm, total 7,700 lm)
	Non-office-compliant (OC) 1,410 and 1,450 mm, 3,000 K versions:
	18.8 W (direct 1,900 lm)
	34 W (direct 3,100 lm)
	31 W (direct 1,900 lm, indirect 1,400 lm, total 3,300 lm)
	55 W (direct 3,100 lm, indirect 2,300 lm, total 5,400 lm)
Beam angle	80 ° (OC), 110 ° (NOC)
Luminous flux	1,500 to 7,700 lm (4,000 K)
Correlated Colour	3,000 or 4,000 K
Temperature	
Colour Rendering Index	>80
Lumen maintenance at median useful life*	L85
50,000 h	
Control gear failure rate at median useful life	5%
50,000 h	

Performance Ambient	+25 °C
Temperature Tq	
Operating temperature range	+10 to +40 °C
Driver	Built-in
Power/Data supply	PDS-60 24 V; supply for indoor and outdoor use
Mains voltage	220-240 V / 50-60 Hz
Dimming	Compatible with many commercial available ELV dimmers
Control system input	0-16 V, DALI
Options	Central battery
Material	Housing: anodised aluminium Driver box: steel Cover: PMMA or polycarbonate
Colour	Aluminium (ALU)
Optical cover	Office-compliant: PMMA, semi-transparent Non-office-compliant: polycarbonate, opal
Connection	Push-in connector (PI) or with pull relief (PIP)
Maintenance	Optical module replaceable, no internal cleaning required
Installation	Fixation by means of brackets Individual or in-line; suspended mounting with three different options: SM2 (one 2-wire bag, one Reutlinger for ceiling side, one ceiling cap) SW2 (one 2-wire bag, one (for LF1) or two (for BV/LE1) Reutlingers, one tool to fix the alignment profile (for LF1)) SMTT (one 2-wire bag, one (for LF1) or two (for BV/LE1) T-bar ceiling clips, one (for LF1) or two (for BV/LE1) Reutlingers, one tool to fix the alignment profile (for LF1)) Through-wiring possible
Remarks	Suspension set to be delivered with the luminaire

Versions



RC530B



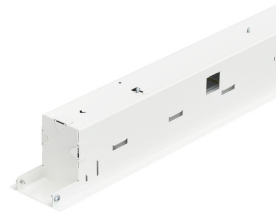
TrueLine Recessed Standalone Asym

TrueLine, recessed

Product details



TrueLine-
RC530_RC531_RC534B_VPC-
DPP.tif



TrueLine-
RC530_RC531_RC534B_VPC_PI5-
DPP.tif



TrueLine-
RC534B_SM534C_SP534P-DPP.tif

Accessories



End caps, two pieces

Ordercode 910403219703

TrueLine, recessed

Application Conditions

Ambient temperature range	+10 to +40 °C
Maximum dim level	1%
Suitable for random switching	No

Approval and Application

Mech. impact protection code	IK02
Ingress protection code	IP20

Controls and Dimming

Dimmable	Yes
----------	-----

Operating and Electrical

Input Voltage	220 to 240 V
---------------	--------------

General Information

Cap-Base	-
CE mark	CE mark
Protection class IEC	Safety class I (I)
Optical cover/lens type	PM
Driver included	Yes
ENEC mark	ENEC plus mark
Flammability mark	F
Gear	-
Glow-wire test	650/5
Embedded control	No
Light source replaceable	No
Number of gear units	1 unit
Number of light sources	1
Optic type	No
UL mark	No

Initial Performance (IEC Compliant)

Initial chromaticity	(0.38, 0.38) SDCM <3
Init. Corr. Colour Temperature	4000 K
Init. Colour Rendering Index	≥80
Luminous flux tolerance	+/-10%

Mechanical and Housing

Colour	White
Geometry	Width 0.08 m, length 1.20 m

General Information

Order Code	Full Product Name	Lamp family code	Product Family Code	Type description
910502056703	RC530B LED34S/840 PSD W8L120 VPC P15	LED34S	RC530B	OC
910502057903	RC534B LED40S/840 PSD W8L120 VPC P15	LED40S	RC534B	-

Initial Performance (IEC Compliant)

Order Code	Full Product Name	Initial LED luminaire efficacy	Initial luminous flux	Initial input power
910502056703	RC530B LED34S/840 PSD W8L120 VPC P15	142 lm/W	3400 lm	24 W

Order Code	Full Product Name	Initial LED luminaire efficacy	Initial luminous flux	Initial input power
910502057903	RC534B LED40S/840 PSD W8L120 VPC P15	116 lm/W	4000 lm	34.5 W

TrueLine, recessed



© 2019 Signify Holding All rights reserved. Signify does not give any representation or warranty as to the accuracy or completeness of the information included herein and shall not be liable for any action in reliance thereon. The information presented in this document is not intended as any commercial offer and does not form part of any quotation or contract, unless otherwise agreed by Signify. All trademarks are owned by Signify Holding or their respective owners.

www.lighting.philips.com
2019, May 30 - data subject to change