



Setting the standard in Surface-mounted LED Downlight

GreenSpace Surface-mounted

Philips GreenSpace Surface-mounted LED Downlight delivers a superior LED alternative that's up to 66% more energy efficient than the conventional downlight retrofits. Blending seamlessly into its environment, GreenSpace Surface-mounted LED Downlight mimics the form of conventional recessed downlights minus the associated high energy and maintenance costs. Philips GreenSpace Surface-mounted LED Downlight is also ideal for all commercial lighting applications as well as public indoor space where there is limited space in the ceiling.

Benefits

- Lumen output: Different lumens in different sizes and mounting heights with options of 1000lm, 2000lm, 3800lm & 6600lm.
- Superior light performance: Colors rendered accurately(CRI>80) and high system efficacy(100lm/w)
- Varieties: IP20, IP65 version with choice of different lumen output, and option of black housing through tailor-made
- Long lifetime: 50,000 hour lifetime ensures more savings in the long run

Features

- System efficacy: 100lm/W, energy saving up to 66% vs conventional downlights
- Reliable performance: Lifetime 50,000hours (L70B50@Ta25°C)
- Excellent light quality - CRI>=80 @3000K,4000K and 6500K
- Integral lightweight design – Installation cost is significantly reduced

GreenSpace Surface-mounted

Application

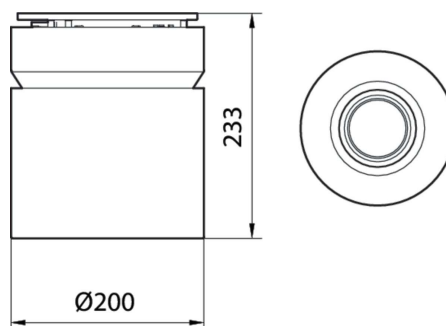
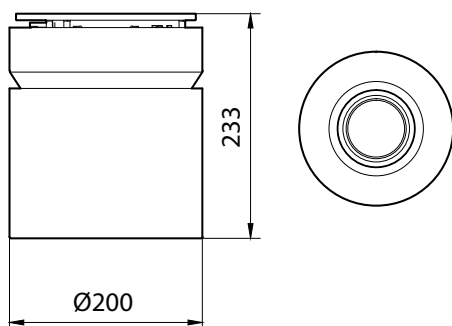
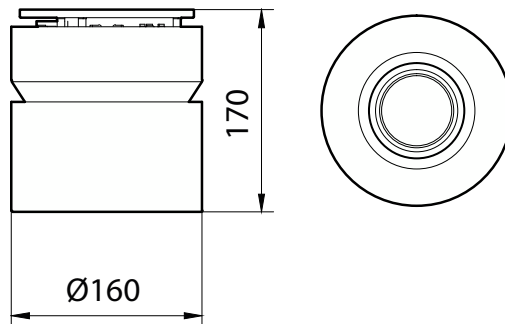
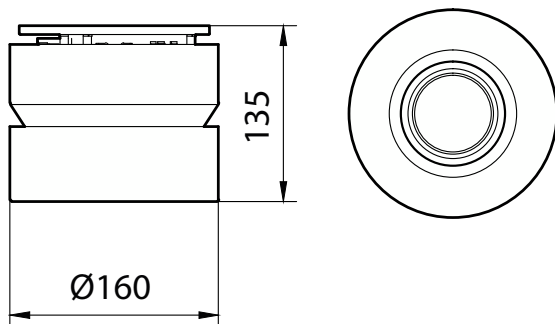
- Shopping mall
- Station concourse
- Canopy
- Airport public area
- Stadium public area

Specifications

Mounting type	surface mounted
Operating Temperature range	-20°C to +40°C
Light Source	LED module
Mains Voltage	220-240V AC / 50-60Hz
Dimming	PSU: non-dimmable
Material	Housing: Die-cast Aluminum
Main color of the luminaire	White Black (ETO available)
Lumen maintenance at median useful life	L70 50.000h
Luminous flux	LED10: 1000lm LED20: 2000lm LED40: 3800lm LED70: 6600lm

Power consumption	10W, 20W, 38W, 66W
Luminaire efficacy	100lm/W @840
Correlated color temperature - CCT	3000K, 4000K, 6500K
Color Rendering index - CRI	80
Beam angle	LED10 & LED20: 90° LED40 & LED70: 60°
Protection Class	Class I
IEC61140	
Ingress protection	IP20 & IP65 for LED40 & LED70 only
Overall diameter	LED10/LED20: 160mm LED70: 200mm LED40: 160mm (IP20) & 200MM (IP65)
Installation	Surface Mount

Dimensional drawing



GreenSpace Surface-mounted

General Information

CE mark	CE mark
Driver included	Yes
ENEC mark	-
Flammability mark	-
Glow-wire test	Temperature 750 °C, duration 5 s
Light source replaceable	No
Number of gear units	1 unit
Service tag	Yes

Light Technical

Optical cover type	Reflector
Color rendering index (CRI)	>80
Optic type	High-gloss mirror

Operating and Electrical

Input Voltage	220 to 240 V
Line Frequency	50 or 60 Hz

Temperature

Ambient temperature range	-20 to +40 °C
---------------------------	---------------

Controls and Dimming

Dimmable	No
----------	----

Approval and Application

Protection class IEC	Safety class I
Mech. impact protection code	IK02

Initial Performance (IEC Compliant)

Luminous flux tolerance	+/-10%
-------------------------	--------

Over Time Performance (IEC Compliant)

Driver failure rate at 5000 h	1.00 %
Median useful life L80B50	40,000 hour(s)
Median useful life L90B50	20,000 hour(s)

Application Conditions

Suitable for random switching	No
-------------------------------	----

Light Technical

Order Code	Full Product Name	Beam angle of light source	Correlated Color Temperature (Nom)	Luminous Efficacy (rated) (Nom)	Luminous Flux
911401509131	SM291C LED10/830 PSU BK	-	3000 K	100 lm/W	1,000 lm
911401847199	SM291C LED10/830 PSU WH GM	- degree(s)	3000 K	100 lm/W	1,000 lm
911401847299	SM291C LED10/840 PSU WH GM	- degree(s)	4000 K	100 lm/W	1,000 lm
911401847499	SM293C LED20/830 PSU WH GM	- degree(s)	3000 K	105 lm/W	2,000 lm
911401847599	SM293C LED20/840 PSU WH GM	- degree(s)	4000 K	105 lm/W	2,000 lm
911401847699	SM293C LED20/865 PSU WH GM	- degree(s)	6500 K	105 lm/W	2,000 lm
911401847799	SM295C LED70/840 PSU WP WH GM	- degree(s)	4000 K	100 lm/W	6,600 lm
911401847999	SM294C LED40/840 PSU WP WH GM	- degree(s)	4000 K	105 lm/W	3,800 lm
911401848099	SM295C LED70/865 PSU WP WH GM	- degree(s)	6500 K	100 lm/W	6,600 lm
911401848299	SM294C LED40/865 PSU WP WH GM	- degree(s)	6500 K	105 lm/W	3,800 lm
911401848699	SM294C LED40/840 PSU WH GM	- degree(s)	4000 K	100 lm/W	3,800 lm
911401848899	SM295C LED70/840 PSU WH GM	- degree(s)	4000 K	100 lm/W	6,600 lm

Operating and Electrical

Order Code	Full Product Name	Power Consumption
911401509131	SM291C LED10/830 PSU BK	10 W
911401847199	SM291C LED10/830 PSU WH GM	10 W
911401847299	SM291C LED10/840 PSU WH GM	10 W
911401847499	SM293C LED20/830 PSU WH GM	19 W
911401847599	SM293C LED20/840 PSU WH GM	19 W
911401847699	SM293C LED20/865 PSU WH GM	19 W

Order Code	Full Product Name	Power Consumption
911401847799	SM295C LED70/840 PSU WP WH GM	66 W
911401847999	SM294C LED40/840 PSU WP WH GM	36 W
911401848099	SM295C LED70/865 PSU WP WH GM	66 W
911401848299	SM294C LED40/865 PSU WP WH GM	36 W
911401848699	SM294C LED40/840 PSU WH GM	38 W
911401848899	SM295C LED70/840 PSU WH GM	66 W

Mechanical and Housing

GreenSpace Surface-mounted

Order Code	Full Product Name	Housing Color
911401509131	SM291C LED10/830 PSU BK	Black
911401847199	SM291C LED10/830 PSU WH GM	White
911401847299	SM291C LED10/840 PSU WH GM	White
911401847499	SM293C LED20/830 PSU WH GM	White
911401847599	SM293C LED20/840 PSU WH GM	White
911401847699	SM293C LED20/865 PSU WH GM	White

Order Code	Full Product Name	Housing Color
911401847799	SM295C LED70/840 PSU WP WH GM	White
911401847999	SM294C LED40/840 PSU WP WH GM	White
911401848099	SM295C LED70/865 PSU WP WH GM	White
911401848299	SM294C LED40/865 PSU WP WH GM	White
911401848699	SM294C LED40/840 PSU WH GM	White
911401848899	SM295C LED70/840 PSU WH GM	White

Approval and Application

Order Code	Full Product Name	Ingress protection code
911401509131	SM291C LED10/830 PSU BK	IP20
911401847199	SM291C LED10/830 PSU WH GM	IP20
911401847299	SM291C LED10/840 PSU WH GM	IP20
911401847499	SM293C LED20/830 PSU WH GM	IP20
911401847599	SM293C LED20/840 PSU WH GM	IP20
911401847699	SM293C LED20/865 PSU WH GM	IP20

Order Code	Full Product Name	Ingress protection code
911401847799	SM295C LED70/840 PSU WP WH GM	IP65
911401847999	SM294C LED40/840 PSU WP WH GM	IP65
911401848099	SM295C LED70/865 PSU WP WH GM	IP65
911401848299	SM294C LED40/865 PSU WP WH GM	IP65
911401848699	SM294C LED40/840 PSU WH GM	IP20
911401848899	SM295C LED70/840 PSU WH GM	IP20

Initial Performance (IEC Compliant)

Order Code	Full Product Name	Initial chromaticity
911401509131	SM291C LED10/830 PSU BK	(0.44, 0.40) SDCM <5
911401847199	SM291C LED10/830 PSU WH GM	(0.44, 0.40) SDCM <5
911401847299	SM291C LED10/840 PSU WH GM	(0.38, 0.38) SDCM <5
911401847499	SM293C LED20/830 PSU WH GM	(0.44, 0.40) SDCM <5
911401847599	SM293C LED20/840 PSU WH GM	(0.38, 0.38) SDCM <5
911401847699	SM293C LED20/865 PSU WH GM	(0.31, 0.32) SDCM <5

Order Code	Full Product Name	Initial chromaticity
911401847799	SM295C LED70/840 PSU WP WH GM	(0.38, 0.38) SDCM <5
911401847999	SM294C LED40/840 PSU WP WH GM	(0.38, 0.38) SDCM <5
911401848099	SM295C LED70/865 PSU WP WH GM	(0.31, 0.32) SDCM <5
911401848299	SM294C LED40/865 PSU WP WH GM	(0.31, 0.32) SDCM <5
911401848699	SM294C LED40/840 PSU WH GM	(0.38, 0.38) SDCM <5
911401848899	SM295C LED70/840 PSU WH GM	(0.38, 0.38) SDCM <5

