



# The perfect energy efficient LED replacement for conventional downlights

## SmartBright LED Downlight DN029B

The Philips SmartBright G2 LED downlight provides a professional and flexible solution for a wide variety of applications. Offering three selectable colour temperatures plus integrated dimming capability, the G2 downlight makes it really easy to create the perfect ambience for your unique environment. This affordable and quick to install fitting delivers high energy savings without compromising on light quality.

### Benefits

- Available in 4 standard ratings and sizes: 7.5W/800lm, 9W/1000lm, 10.5W/1200lm, 18W/2000lm.
- The 7.5W/800lm variant is also available to order in a cost effective and convenient 10 pack.
- Discreet and attractive design finish to blend perfectly into a broad spectrum of home or business environments.
- Easy 'clip-in-place' mounting and power connection to reduce overall installation time.

# SmartBright LED Downlight DN029B

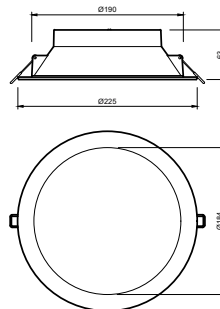
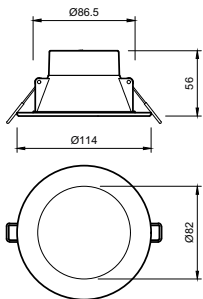
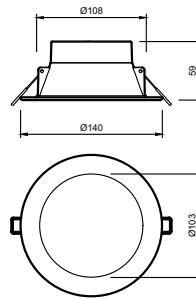
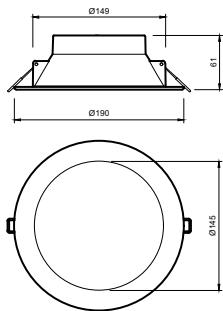
## Features

- Select from three colour temperatures with a slide of the switch. (Warm White, Cool White, Daylight)
- Trailing/leading edge dimmable for easy light level and ambience adjustment.
- Pre-cabled as standard with 0.8m cord and power plug.
- 3 year warranty with 30,000h (L70) rated lifetime.

## Application

- General residential and commercial buildings installations.
- Homes - living areas, bedrooms, passage ways etc.
- Commercial - office areas, corridors, shop fronts, retail spaces, meeting rooms.

## Dimensional drawing



SmartBright LED Downlight DN029B

General Information	
Light source replaceable	No
Light Technical	
Correlated Color Temperature (Nom)	3000 K
Color rendering index (CRI)	80
Operating and Electrical	
Input Voltage	220 to 240 V
Line Frequency	50 or 60 Hz
Temperature	
Ambient temperature range	-20 to +40 °C
Controls and Dimming	
Dimmable	Yes
Mechanical and Housing	
Housing Color	White
Approval and Application	
Protection class IEC	Safety class II
Mech. impact protection code	IK03
Ingress protection code	IP40/IP54 front

Light Technical

Order Code	Full Product Name	Luminous Efficacy (rated)	
		(Nom)	Luminous Flux
929002531219	DN029B G2 LED8/CCT PSR-E D90 CAU	106.00 lm/W	800 lm
929002531249	DN029B G2 LED8/CCT PSR-E D90 CAU 10-PK	106.00 lm/W	800 lm
929002531419	DN029B G2 LED10/CCT PSR-E D120 CAU	111.00 lm/W	1,000 lm
929002531619	DN029B G2 LED12/CCT PSR-E D150 CAU	114.00 lm/W	1,200 lm
929002531719	DN029B G2 LED20/CCT PSR-E D200 CAU	111.00 lm/W	2,000 lm
929002531849	DN029B G2 LED8/WW PSR-E D90 CAU 20-PK	106.00 lm/W	800 lm

Operating and Electrical

Order Code	Full Product Name	Power Consumption
929002531219	DN029B G2 LED8/CCT PSR-E D90 CAU	7.5 W
929002531249	DN029B G2 LED8/CCT PSR-E D90 CAU 10-PK	7.5 W
929002531419	DN029B G2 LED10/CCT PSR-E D120 CAU	9 W

Order Code	Full Product Name	Power Consumption
929002531619	DN029B G2 LED12/CCT PSR-E D150 CAU	10.5 W
929002531719	DN029B G2 LED20/CCT PSR-E D200 CAU	18 W
929002531849	DN029B G2 LED8/WW PSR-E D90 CAU 20-PK	7.5 W

Initial Performance (IEC Compliant)

Order Code	Full Product Name	Initial chromaticity
929002531219	DN029B G2 LED8/CCT PSR-E D90 CAU	(3000K@, 0.4400, 0.4030;
		4000K@0.37600.3656;
		6500K@0.31300.3370) 6
929002531249	DN029B G2 LED8/CCT PSR-E D90 CAU 10-PK	(3000K@, 0.4400, 0.4030;
		4000K@0.37600.3656;
		6500K@0.31300.3370) 6
929002531419	DN029B G2 LED10/CCT PSR-E D120 CAU	(3000K@, 0.4400, 0.4030;
		4000K@0.37600.3656;
		6500K@0.31300.3370) 6

Order Code	Full Product Name	Initial chromaticity
929002531619	DN029B G2 LED12/CCT PSR-E D150 CAU	(3000K@, 0.4400, 0.4030;
		4000K@0.37600.3656;
		6500K@0.31300.3370) 6
929002531719	DN029B G2 LED20/CCT PSR-E D200 CAU	(3000K@, 0.4400, 0.4030;
		4000K@0.37600.3656;
		6500K@0.31300.3370) 6
929002531849	DN029B G2 LED8/WW PSR-E D90 CAU 20-PK	(3000K@, 0.4400, 0.4030) 6

Over Time Performance (IEC Compliant)

Order Code	Full Product Name	Driver failure rate at
		5000 h
929002531219	DN029B G2 LED8/CCT PSR-E D90 CAU	1.2 %
929002531249	DN029B G2 LED8/CCT PSR-E D90 CAU 10-PK	1.2 %
929002531419	DN029B G2 LED10/CCT PSR-E D120 CAU	1.2 %

Order Code	Full Product Name	Driver failure rate at
		5000 h
929002531619	DN029B G2 LED12/CCT PSR-E D150 CAU	1.2 %
929002531719	DN029B G2 LED20/CCT PSR-E D200 CAU	1.2 %
929002531849	DN029B G2 LED8/WW PSR-E D90 CAU 20-PK	1.6 %

## SmartBright LED Downlight DN029B

