



Smart Post-top G3-BGP161

Smart Post-top G3

Smart Post Top G3 inherits the classic look and style of the previous generation with improved system efficacy and light quality. The Smart Post Top G3 optimized optical design increases both horizontal and vertical uniformity. The highly efficient thermal system design ensures maximum heat transfer and longer LED service life. This reliable luminaire system operates well in both low and high temperature environments. It offers more than 11 years expected life, reducing maintenance frequency and cost (based on a 50,000 hour rated life and 12 hours operation per day). It provides a comfortable and safe atmosphere to gardens, residential areas, courtyards, side streets, squares, parks & playgrounds.

Benefits

- Outstanding Lighting Performance
- Reliable Quality
- Environment Friendly

Features

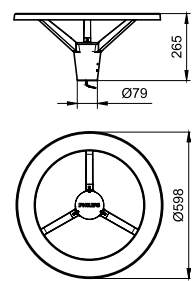
- SDCM \leq 4 high uniformity, up to 92 lm/w, high system efficacy, up to 2500lm high brightness, CRI $>$ 70 shows true colour.
- 50K hours lifetime @L70B50 IP65, IK07, water and shock resistant Corrosion resistant painting, aluminum housing, anti UV polycarbonate optics.
- Compliant with the material restriction requirements of RoHS significant energy saving compared to conventional lighting.

Application

- residential area, path way, park, etc.

Smart Post-top G3

Dimensional drawing



| General Information | |
|--|--|
| CE mark | - |
| Driver included | Yes |
| Flammability mark | For mounting on normally flammable surfaces |
| Lamp family code | - |
| Light source replaceable | Yes |
| Number of gear units | 1 unit |
| Light Technical | |
| Luminaire light beam spread | - |
| Optical cover type | Acrylate cover and semi-matt high-reflective optic |
| Color rendering index (CRI) | 70 |
| Optic type outdoor | Symmetrical |
| Standard tilt angle side entry | - |
| Standard tilt angle posttop | - |
| Upward light output ratio | 0 |
| Controls and Dimming | |
| Dimmable | No |
| Approval and Application | |
| Mech. impact protection code | IK07 |
| Ingress protection code | IP65 |
| Surge Protection (Common/Differential) | 4/2 kV |
| Application Conditions | |
| Maximum dim level | Not applicable |

Light Technical

| Order Code | Full Product Name | Light source | Correlated Color | |
|--------------|---|---------------|-------------------|---------------|
| | | color | Temperature (Nom) | Luminous Flux |
| 911401834598 | BGP161 LED2300/WW PSU 220-240V 9006 GM | Warm white | 3000 K | 2300 lm |
| 911401834698 | BGP161 LED2300/WW PSU 220-240V 7043 GM | Warm white | 3000 K | 2300 lm |
| 911401834798 | BGP161 LED2500/NW PSU 220-240V 9006 GM | Neutral white | 4000 K | 2500 lm |
| 911401834898 | BGP161 LED2500/NW PSU 220-240V 7043 GM | Neutral white | 4000 K | 2500 lm |

Operating and Electrical

Smart Post-top G3

| Order Code | Full Product Name | Power Consumption |
|--------------|--|-------------------|
| 911401834598 | BGP161 LED2300/WW PSU 220-240V 9006 GM | 27 W |
| 911401834698 | BGP161 LED2300/WW PSU 220-240V 7043 GM | 27 W |

| Order Code | Full Product Name | Power Consumption |
|--------------|--|-------------------|
| 911401834798 | BGP161 LED2500/NW PSU 220-240V 9006 GM | 29 W |
| 911401834898 | BGP161 LED2500/NW PSU 220-240V 7043 GM | 29 W |

Mechanical and Housing

| Order Code | Full Product Name | Housing Color |
|--------------|--|---------------|
| 911401834598 | BGP161 LED2300/WW PSU 220-240V 9006 GM | Gray |
| 911401834698 | BGP161 LED2300/WW PSU 220-240V 7043 GM | Dark gray |

| Order Code | Full Product Name | Housing Color |
|--------------|--|---------------|
| 911401834798 | BGP161 LED2500/NW PSU 220-240V 9006 GM | Gray |
| 911401834898 | BGP161 LED2500/NW PSU 220-240V 7043 GM | Dark gray |

