



Affordable and reliable energy saving LED Lighting Luminaires

Smartbright Waterproof G2

SmartBright Waterproof G2 is an innovation from SmartBright Waterproof G1, can be used to replace traditional waterproof luminaires with fluorescent lamps or LED tubes, provides quality of light with substantial energy & maintenance savings. The luminaire and its components are designed for both indoor and semi-outdoor application (anti-UV PC material housing and diffuser), it is an ideal lighting solution for canopy, food industry, car parks, car washers. Beyond that, SmartBright Waterproof G2 is also maintenance free by seal for life integral design, and reliable 25K hrs lifetime.

Benefits

- Easy Wiring: 3 wiring options for select, fulfil with customer wiring habits.
- Excellent Performance: good uniformity SDCM<5, high quality light CRI>80, more brighter with higher lumen output.
- Reliable Quality: 25K hours with 70% lumen maintained, wide range working temperature from -30°C to +45°C, can be applied in various industrial environments

Features

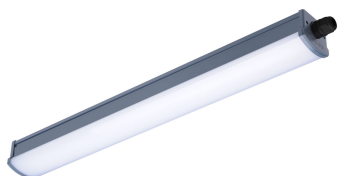
- Robust design: IP65 IK06, Anti UV Polycarbonate housing, dual extrusion technology.
- Easy Installation: Stainless Universal Mounting Clip, Stainless Screws, Stainless Hooks, all in 1 package with luminaire.

Smartbright Waterproof G2

Application

- Industry general area
- Food and beverage
- workshop and assembly line
- Car park
- Canopy, walkways
- Semi outdoor

Versions

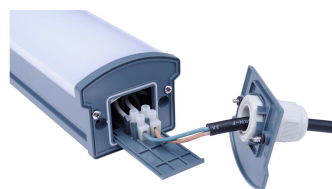


WT066C L600



WT066C

Product details



Smartbright Waterproof G2

Application Conditions

Ambient temperature range	-30 to +45 °C
Maximum dim level	Not applicable
Suitable for random switching	Not applicable

Approval and Application

Mech. impact protection code	IK06
Ingress protection code	IP65

Controls and Dimming

Dimmable	No
----------	----

Operating and Electrical

Input Voltage	220-240 V
---------------	-----------

General Information

Beam angle of light source	- °
CE mark	CE mark
Protection class IEC	Safety class II (II)
Driver included	Yes
ENEC mark	-
Flammability mark	NO
Glow-wire test	750/5
Light source replaceable	No
Number of gear units	1 unit
Optic type	Symmetrical

Initial Performance (IEC Compliant)

Initial chromaticity	SDCM<5
Init. Colour Rendering Index	>80
Luminous flux tolerance	+/-10%

Mechanical and Housing

Colour	Gray and white
--------	----------------

Over Time Performance (IEC Compliant)

Median useful life L80B50	17500 h
Median useful life L90B50	8100 h

Initial Performance (IEC Compliant)

Order Code	Full Product Name	Init. Corr. Colour Temperature	Initial LED luminaire efficacy	Initial luminous flux	Initial input power
31167899	WT066C CW LED9 L600 PSU TB	6500 K	95 lm/W	900 lm	9.4 W
31168599	WT066C NW LED9 L600 PSU TB	4000 K	95 lm/W	900 lm	9.4 W
31169299	WT066C CW LED18 L600 PSU TB	6500 K	90 lm/W	1800 lm	19.4 W
31170899	WT066C NW LED18 L600 PSU TB	4000 K	90 lm/W	1800 lm	19.4 W
31171599	WT066C CW LED18 L1200 PSU TB	6500 K	90 lm/W	1800 lm	19.4 W
31172299	WT066C NW LED18 L1200 PSU TB	4000 K	90 lm/W	1800 lm	19.4 W
31173999	WT066C CW LED36 L1200 PSU TB	6500 K	90 lm/W	3600 lm	40 W
31174699	WT066C NW LED36 L1200 PSU TB	4000 K	90 lm/W	3600 lm	40 W
31175399	WT066C CW LED45 L1500 PSU TB	6500 K	90 lm/W	4500 lm	49 W
31176099	WT066C NW LED45 L1500 PSU TB	4000 K	90 lm/W	4500 lm	49 W
31177799	WT066C CW LED9 L600 PSU TW	6500 K	90 lm/W	900 lm	9.4 W
31178499	WT066C NW LED9 L600 PSU TW	4000 K	90 lm/W	900 lm	9.4 W
31179199	WT066C CW LED18 L600 PSU TW	6500 K	90 lm/W	1800 lm	19.4 W
31180799	WT066C NW LED18 L600 PSU TW	4000 K	90 lm/W	1800 lm	19.4 W
31181499	WT066C CW LED18 L1200 PSU TW	6500 K	90 lm/W	1800 lm	19.4 W
31182199	WT066C NW LED18 L1200 PSU TW	4000 K	90 lm/W	1800 lm	19.4 W
31183899	WT066C CW LED36 L1200 PSU TW	6500 K	90 lm/W	3600 lm	40 W
31184599	WT066C NW LED36 L1200 PSU TW	4000 K	90 lm/W	3600 lm	40 W
31185299	WT066C CW LED45 L1500 PSU TW	6500 K	90 lm/W	4500 lm	49 W
31186999	WT066C NW LED45 L1500 PSU TW	4000 K	90 lm/W	4500 lm	49 W

Smartbright Waterproof G2

