



GreenPerform Waterproof G2 is an upgraded functional water- and dust-proof product, that provides excellent lighting quality, substantial energy savings and maintenance savings.

Greenperform Waterproof G2 - WT188C

Greenperform Waterproof G2 luminaire and its components are designed for both indoor and semi-outdoor application (anti-UV PC material housing and diffuser, stainless steel installation accessory). We design for friendly optical, energy saving, reliable quality, and easy wiring. Beyond that, GreenParking wireless motion detective system is ready to provide the maximum energy saving and new lighting experience to you.

Greenperform Waterproof G2 - WT188C

Benefits

- Slim and elegant look and feel
- Low glare, eye-friendly
- Reliable quality, low failure rate, long lifetime, energy saving and free of maintenance
- Wide working temperature, can be applied in various industrial environments
- Easy wiring, fits in with customer wiring habits and saves labour costs

Features

- IP65 IK08, Anti UV Polycarbonate housing, dual extrusion housing, opal diffuser
- 50 K hours @ L70B50, wide range working temperature from -30 °C to +45 °C
- Surface and suspension installation for ceilings and walls
- stainless mounting clips and hooks, all in one package with the luminaire
- Three wiring options just like conventional products

Application

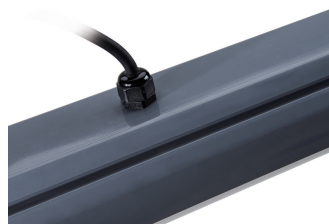
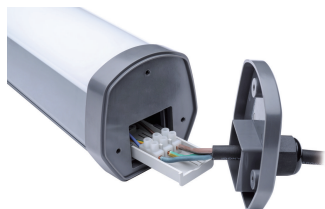
- Industry general application
- Food and beverage workshop and assemble line
- Canopy
- Car parks
- Car washers

Versions



WT188C

Product details



Greenperform Waterproof G2 - WT188C

Application Conditions

Maximum dim level	Not applicable
Suitable for random switching	Not applicable

Approval and Application

Mech. impact protection code	IK08
Ingress protection code	IP65

Controls and Dimming

Dimmable	No
----------	----

Operating and Electrical

Input Voltage	220 to 240 V
---------------	--------------

General Information

Beam angle of light source	- °
CE mark	CE mark
Protection class IEC	Safety class I
Driver included	Yes
ENEC mark	-
Flammability mark	-
Glow-wire test	Temperature 750 °C, duration 5 s
Light source replaceable	No
Number of gear units	1 unit
Optic type	Symmetrical

Initial Performance (IEC Compliant)

Initial chromaticity	SDCM<5
Init. Colour Rendering Index	>80
Luminous flux tolerance	+/-10%

Mechanical and Housing

Colour	Grey and White
--------	----------------

Over Time Performance (IEC Compliant)

Median useful life L80B50	45000 h
Median useful life L90B50	35000 h

Application Conditions

Order Code	Full Product Name	Ambient temperature range
911401830697	WT188C LED40 NW L1200 PSU TB	-30 to +45 °C
911401831097	WT188C LED40 CW L1200 PSU TB	-30 to +45 °C
911401831297	WT188C LED60 CW L1500 PSU TB	-30 to +40 °C
911401832497	WT188C LED40 CW L1200 PSU MW	-30 to +45 °C
911401833097	WT188C LED20 CW L1200 PSU MW	-30 to +45 °C

Initial Performance (IEC Compliant)

Order Code	Full Product Name	Init. Corr. Colour Temperature	Initial LED luminaire efficacy	Initial luminous flux	Initial input power
911401830697	WT188C LED40 NW L1200 PSU TB	4000 K	117 lm/W	4000 lm	34 W
911401831097	WT188C LED40 CW L1200 PSU TB	6500 K	117 lm/W	4000 lm	34 W
911401831297	WT188C LED60 CW L1500 PSU TB	6500 K	108 lm/W	5400 lm	50 W

Order Code	Full Product Name	Init. Corr. Colour Temperature	Initial LED luminaire efficacy	Initial luminous flux	Initial input power
911401832497	WT188C LED40 CW L1200 PSU MW	6500 K	117 lm/W	4000 lm	34 W
911401833097	WT188C LED20 CW L1200 PSU MW	6500 K	125 lm/W	2000 lm	16 W

Greenperform Waterproof G2 - WT188C

