



# eW Profile Powercore gen4 - Ultra-low profile LED under-cabinet luminaire for workspace and accent lighting

## eW Profile Powercore gen4

Profile gen4 brings advanced under-cabinet lighting to today's sophisticated kitchens. Thanks to its ultra-low profile, Profile gen4 fits seamlessly into any kitchen—from galley to grand, including retrofits and new construction. To create the right ambiance, it offers four popular color temperatures (2700 K, 3000 K, 3500 K, or 4000 K). A choice of luminaire lengths and a wide range of accessories keep installation fast and easy. Exceptional energy efficiency can generate rebates right from the start, and deliver dramatic energy savings over many years of reliable use.

### Benefits

- CRI of 90+
- Fits discretely into almost any layout, from simple to elaborate
- Color temperature options offer a range of light, from warm to cool—Warm (2700 K), White (3000 K), Neutral (3500 K), and Cool (4000 K)

## eW Profile Powercore gen4

### Features

- Patented Powercore® technology provides precision output to Profile gen4 luminaires directly from line voltage, enabling longer run lengths and eliminating the need for bulky, hard-to-hide power supplies.
- Consumes as little as 5.5 W of energy per luminaire, and can support continuous runs of up to 15.3 m (50 ft). eW Profile Powercore gen4 luminaires use 40% less energy than comparable fluorescent sources, and 80% less energy than incandescent sources. No off-state power consumption increases energy savings.
- Dimming capability—Patented DIMand® technology offers smooth dimming capability with select reverse-phase ELV-type dimmers.
- Rebate eligibility—Profile gen4 is EnergyStar® listed, as well as a California Title T24 high-efficiency residential listed product, creating rebate opportunities in selected areas.
- Contractor-friendly installation dramatically simplifies installation and lowers total system cost.

### Application

- Shelf lighting
- Task lighting
- POS displays

### Versions



### Accessories



Ordercode 221770



Cable 3.05 m, white, with plug

Ordercode 112276

Accessories



Jumper cable, 152 mm

Ordercode , , ,



Jumper cable, 1525 mm

Ordercode 221846



Y Jumper cable

Ordercode 221861



Ordercode 221952



Mounting rail, white, 483 mm

Ordercode 221960



Mounting rail, white, 991 mm

Ordercode 221986



Mounting rail, white, 229 mm

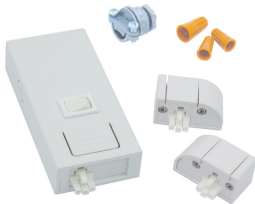
Ordercode 222000

Accessories



White in-line end-to-end coupling  
piece 120 V, 5 pieces

Ordercode 232348



Switched Permanent Wiring  
Compartment, White

Ordercode

