



CoreLine Malaga LED: Simply Efficient

CoreLine Malaga LED

The CoreLine Malaga LED family is designed for general road, street and residential application. The family consists of two sizes and uses a Philips standardised-design LED engine as light source and a Philips Xitanium fixed output outdoor driver.

Quality you can rely on. CoreLine Malaga LED has been designed to be as efficient as possible, performing the same task as the SON-T 50, 70, 100 and 150 W luminaires it replaces; providing the right amount of light in the right place. The medium-beam (DM) optic delivers an efficient distribution onto the road. The combination results in interesting energy savings which reduce operating costs significantly. 50% energy reduction is realistically possible. At the same time, the investment in a CoreLine Malaga LED luminaire is in many cases on the same level as an old SON-T luminaire, including the first lamp. As the LED light engine in CoreLine Malaga LED will last the lifetime of the luminaire, just by saving the multiple lamp replacements needed with SON-T, ROI is immediate. Ease of installation is assured through the extended gland feature; the luminaire does not need to be opened to connect the power cable. At the same time, the flat glass cover can be removed to allow access to the driver for maintenance, if required.

Adding up the functions and features truly make a choice for CoreLine Malaga LED an easy decision. As a member of the CoreLine family, the Malaga LED is easily and quickly available through your local Philips Partner. Simply efficient. Specials; In addition to the standard version of CoreLine Malaga LED as described above, versions with several options are available. As these are specials, and manufactured to order only, these specials do have a longer delivery time. Options available are; Wide-beam (DW) optic. Added surge-protection device 10 kV (SRG10). Marine Salt Protection (MSP) paint finish, e.g. for coastal areas. Micro Mini Pro photocell 35 Lux. Built-in (glass) fuse 6A. 3-metres external flying lead cable (H07RN-F). Not all options can be combined. Please consult your Philips Partner for specific details in case of interest or doubt.

CoreLine Malaga LED

Benefits

- Reliable quality: aluminium die-cast housing and tempered flat glass.
- Maintainable: the driver can be replaced.
- IP65 and IK08 provide durable operation.
- Ease of serviceability, thanks to the Philips Service tag, and ready to be paired with lighting control and software applications, via the Philips SR (System Ready) socket.
- Easy return on investment. The investment in the luminaire, by saving the lamp changes required for SON-T lamp luminaires, is instantly repaid. On top, realistic energy savings of 50% reduce the yearly running costs of the installation.

Features

- A direct, one-for-one replacement for SON-T lamps in road, street and residential applications. A purpose-built, dedicated to LED, robust design including the Philips standardised LED light platform and a fixed output Philips Xitanium outdoor driver. Easy installation through the extended gland. No need to open the luminaire. 100 Khrs lifetime L70 (or 75,000 hours L80) at Tq +25 °C.
- 5-year warranty

Application

- General outdoor; road, street and residential areas.
- Industrial areas.
- Car parks.
- Public transport, such as buses or bus stops.

Specifications

Average Ambient Temperature	-40 to +35 °C
Power supply unit (PSU)	

Versions

Coreline Malaga LED - LED
module 3700 lm

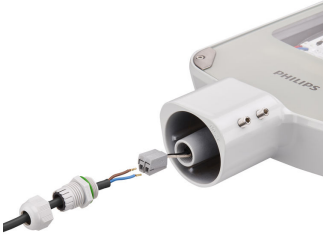


Coreline Malaga LED - LED
module 5500 lm



CoreLine Malaga LED

Product details



CoreLine_Malaga_LED-
BRP101_102-1DPP.TIF



CoreLine_Malaga_LED-
BRP101_102-2DPP.TIF



CoreLine_Malaga_LED-
BRP101_102-3DPP.TIF



CoreLine_Malaga_LED-
BRP101_102-4DPP.TIF



CoreLine_Malaga_LED-
BRP101_102-5DPP.TIF



CoreLine_Malaga_LED-BRP101-
DPP.TIF



CoreLine_Malaga_LED-BRP102-
DPP.TIF

CoreLine Malaga LED

Accessories

Post top adaptor 60 mm

Ordercode 62134100



Application Conditions

Maximum dim level Not applicable

Approval and Application

Mech. impact protection code IK08

Controls and Dimming

Dimmable no

General Information

Luminaire light beam spread -
CE mark CE mark
Light source colour 740 neutral white
Optical cover/lens type FG
Driver included Yes
ENEC mark ENEC mark
Flammability mark NO
Light source replaceable No
Number of gear units 1 unit
Optic type Distribution
medium

Initial Performance (IEC Compliant)

Init. Corr. Colour Temperature 4000 K
Init. Colour Rendering Index 70

Light Technical

Standard tilt angle side entry 0°
Standard tilt angle posttop -
Upward light output ratio 0

Mechanical and Housing

Colour Grey

General Information

Order Code	Full Product Name	Lamp family code	Product Family Code
99815100	BRP101 LED37/740 I DM	LED37	BRP101
99817500	BRP102 LED55/740 I DM	LED55	BRP102
99819900	BRP102 LED75/740 I DM	LED75	BRP102
99821200	BRP102 LED110/740 I DM	LED110	BRP102

Initial Performance (IEC Compliant)

Order Code	Full Product Name	Initial luminous flux	Order Code	Full Product Name	Initial luminous flux
99815100	BRP101 LED37/740 I DM	3054 lm	99819900	BRP102 LED75/740 I DM	6133 lm
99817500	BRP102 LED55/740 I DM	4600 lm	99821200	BRP102 LED110/740 I DM	9006 lm

CoreLine Malaga LED

