



# The easy way to smart lighting

## MasterConnect LEDtube EM/Mains T8

Philips MasterConnect LEDtube EM/Mains T8 means easy upgrade to a connected lighting system. Its 2.4GHz mesh networking technology enables wireless integration with a variety of control devices, such as sensor and switch. The result? Even more energy saving and enhanced flexibility in your space. Through dimming, occupancy sensing and/or daylight harvesting, lamps deliver 50% or more energy saving thanks to MasterConnect technology.

### Benefits

- 50% energy saving vs. conventional lamps, plus 20-40% via advanced controls
- On/off, dimming and scene setting to promote productivity and user comfort
- Flexible lighting solution to meet dynamic needs in the space

### Features

- Retrofit to existing fluorescent lamps on EM ballast installations
- Superior lighting performance over 50,000hrs lifetime
- Easy to commission and (re-)configure
- Reliable and secure wireless communication within 2.4GHz mesh network

### Application

- Office, education and retail
- Parking, industry and warehouse

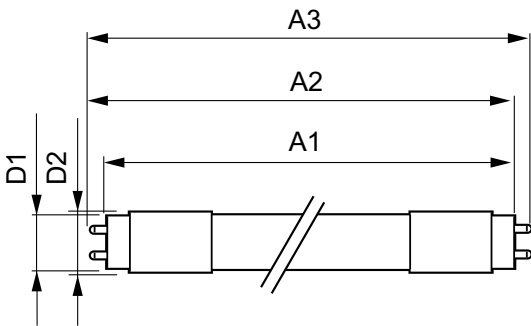
# MasterConnect LEDtube EM/Mains T8

## Versions



G13

## Dimensional drawing



Product	D1	D2	A1	A2	A3
MASTERConnect LEDtube IA 25.7	25.7	28 mm	1500 mm	1507.1 mm	1514.2
1500mm UO 25.5W840 T8	mm				mm
MASTERConnect LEDtube IA 25.7	25.7	28 mm	1199.4	1205.3	1212.4
1200mm UO 16.5W865 T8	mm		mm	mm	mm

MasterConnect LEDtube EM/Mains T8

Approval and Application	
Energy Efficiency Label (EEL)	A++
Controls and Dimming	
Dimmable	Wireless Dim
Operating and Electrical	
Input Frequency	50 to 60 Hz
Voltage (Nom)	220-240 V
Starting Time (Nom)	0.5 s
General Information	
Cap-Base	G13
Nominal Lifetime (Nom)	50000 h
Switching Cycle	200000X
Light Technical	
Beam Angle (Nom)	160 °
Color Rendering Index (Nom)	83
Llmf At End Of Nominal Lifetime (Nom)	70 %
Mechanical and Housing	
Bulb Shape	Tube, double-ended
Temperature	
T-Ambient (Max)	45 °C
T-Ambient (Min)	-20 °C
T-Case Maximum (Nom)	45 °C
T-Storage (Max)	65 °C
T-Storage (Min)	-40 °C

Approval and Application

Order Code	Full Product Name	Energy Consumption kWh/1000 h
77346800	MASTERConnect LEDtube IA 1200mm UO 16.5W865 T8	17 kWh
77350500	MASTERConnect LEDtube IA 1500mm UO 25.5W840 T8	26 kWh

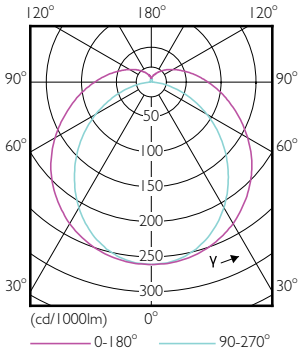
Operating and Electrical

Order Code	Full Product Name	Power (Rated) (Nom)
77346800	MASTERConnect LEDtube IA 1200mm UO 16.5W865 T8	16.5 W

Order Code	Full Product Name	Power (Rated) (Nom)
77350500	MASTERConnect LEDtube IA 1500mm UO 25.5W840 T8	25.5 W

Light Technical

Order Code	Full Product Name	Correlated Color		
		Color Code	Temperature (Nom)	Luminous Flux (Nom)
77346800	MASTERConnect LEDtube IA 1200mm UO 16.5W865 T8	865	6500 K	2500 lm
77350500	MASTERConnect LEDtube IA 1500mm UO 25.5W840 T8	840	4000 K	3700 lm



## MasterConnect LEDtube EM/Mains T8

