

# Side, Tenon and Reducer Brackets – superior structural quality

## Side, Tenon and Reducer Brackets

The Gardco SBRKT Side, Tenon and Reducer Brackets accept a wide variety of mounting configurations to support Site, area, and flood luminaires to support numerous applications

### Benefits

- Built to withstand harsh environmental conditions
- Superior corrosion resistance
- Optimal strength and durability

### Features

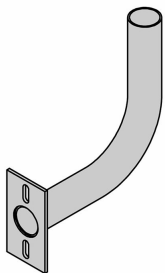
- Increased mounting flexibility for companion luminaires and poles
- For use in wall mount applications and some pole applications

## Side, Tenon and Reducer Brackets

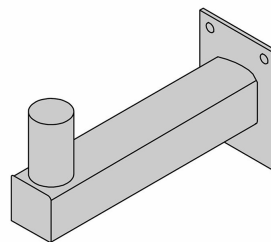
### Application

- Area Lighting
- Site Lighting
- Security Lighting
- Flood Lighting
- Light Commercial
- Offices
- Retail
- Education
- Hospitals and Care Centers
- Municipal Buildings
- Industrial
- Manufacturing

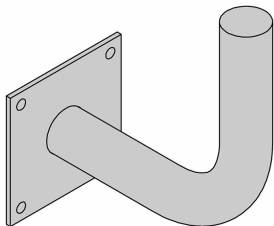
### Versions



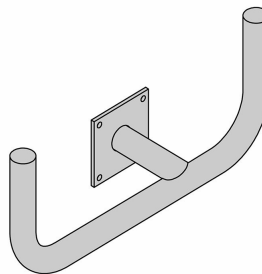
Steel Bracket, Right Angle, Single,  
12"L x 13"H, 4" Square Pole



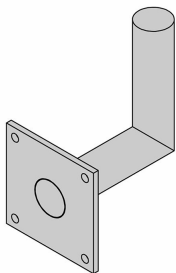
Steel Bracket, Right Angle, Single,  
10" Length, Wall Mount



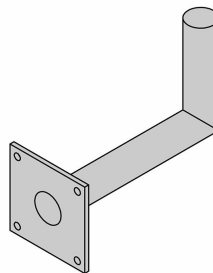
Steel Bracket, Right Angle, Single,  
12"L x 13"H, Wall Mount



Steel Bracket, Right Angle, Twin  
Linear, 30" Spacing, Wall Mount



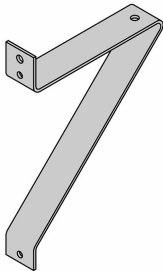
Steel Bracket, Right Angle Heavy,  
Single, 8.5"L x 8"H, Wall Mount



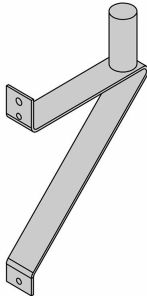
Steel Bracket, Right Angle Heavy,  
Single, 14"L x 8"H, Wall Mount

# Side, Tenon and Reducer Brackets

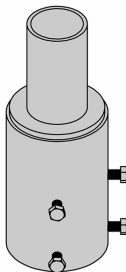
## Versions



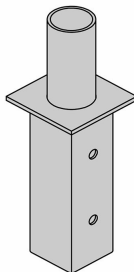
Steel Bracket, Side Angle, Flat, 4" Length, Wall Mount



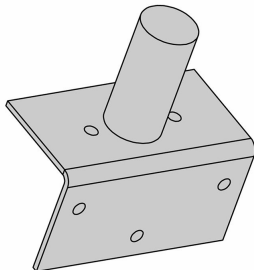
Steel Bracket, Side Angle, Single, 4" Length, Wall Mount



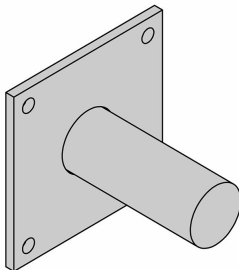
Steel Bracket, External Tenon Reducer, Single, 4" Length, Round Pole



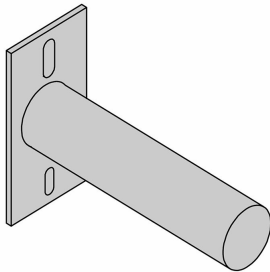
Steel Bracket, Internal Tenon Adapter, Single, 4" Length, Square Pole



Steel Bracket, Parapet Tenon, Single, 5" Length, Wall Mount



Steel Bracket, Vertical Tenon, Single, 6" Length, Wall Mount



Steel Bracket, Side Tenon, Single, 10" Length, 4" Square Pole

## Side, Tenon and Reducer Brackets

