



The new generation of Mains T5 LEDtube lighting

MASTER LEDtube Mains T5

The new Philips Master LEDtube Mains T5 brings simplicity to your lighting project. You don't need to pay attention to the driver technology anymore. Thanks to a unique design, Philips MASTER LEDtube Mains T5 installs in luminaires operating on mains power connection. So simple to operate! Perfectly safe, reliable & easy to install Philips MASTER LEDtube Mains T5 is the ideal alternative to standard fluorescent tubes to maximize value over lifetime with high energy saving and lower maintenance costs.

Benefits

- Reduced operational cost thanks to lower energy consumption
- Lower maintenance cost thanks to longer lifetime than conventional lamps
- Fastest and easiest way to upgrade existing luminaires to LEDtechnology; completely safe product and installation process

Features

- Replacement of existing T5 lamps: operates with mains power connection
- Energy savings compared with fluorescent tubes
- Long lifetime
- No mercury

Application

- Offices, shops, classrooms
- Industrial facilities and warehouses

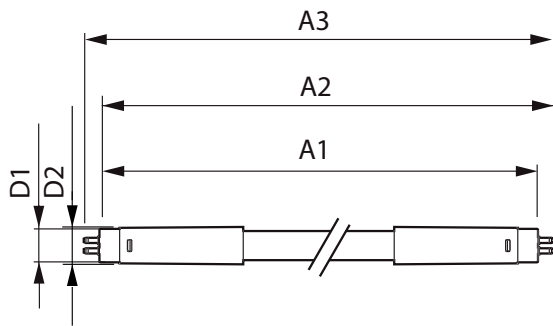
MASTER LEDtube Mains T5

Versions



LEDtube G5

Dimensional drawing



Product	D1	D2	A1	A2	A3
MAS LEDtube 1500mm HO 26W 840 T5	15 mm	16.9 mm	1449 mm	1456.1 mm	1463.2 mm
MAS LEDtube 1500mm HO 26W 865 T5	15 mm	16.9 mm	1449 mm	1456.1 mm	1463.2 mm
MAS LEDtube 1200mm HO 26W 840 T5	15 mm	16.9 mm	1149 mm	1156.1 mm	1163.2 mm
MAS LEDtube 1200mm HO 26W 865 T5	15 mm	16.9 mm	1149 mm	1156.1 mm	1163.2 mm
MAS LEDtube 1500mm HO 26W 830 T5	15 mm	16.9 mm	1449 mm	1456.1 mm	1463.2 mm
MAS LEDtube 1200mm HO 26W 830 T5	15 mm	16.9 mm	1149 mm	1156.1 mm	1163.2 mm

MASTER LEDtube Mains T5

Approval and Application

Energy Consumption kWh/1000 h	26 kWh
Energy Efficiency Label (EEL)	A++

Controls and Dimming

Dimmable	No
----------	----

Operating and Electrical

Input Frequency	50 to 60 Hz
Voltage (Nom)	220-240 V
Power (Rated) (Nom)	26 W
Starting Time (Nom)	0.5 s

General Information

Cap-Base	G5
Nominal Lifetime (Nom)	50000 h
Rated Lifetime (Hours)	50000 h
Switching Cycle	200000X

Light Technical

Beam Angle (Nom)	200 °
Color Rendering Index (Nom)	80
Llmf At End Of Nominal Lifetime (Nom)	70 %
Rated Beam Angle	200 °

Temperature

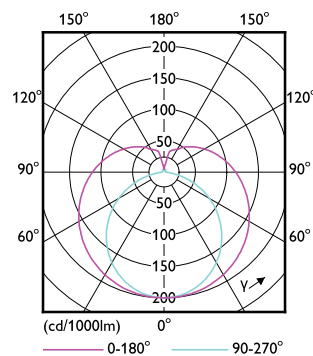
T-Ambient (Max)	45 °C
T-Ambient (Min)	-20 °C
T-Storage (Max)	65 °C
T-Storage (Min)	-40 °C

Light Technical

Order Code	Full Product Name	Color Code	Correlated Color		
			Temperature (Nom)	Luminous Flux (Nom)	Luminous Flux (Rated) (Nom)
929001908502	MAS LEDtube 1200mm HO 26W 830 T5	830	3000 K	3600 lm	3600 lm
929001908602	MAS LEDtube 1200mm HO 26W 840 T5	840	4000 K	3900 lm	3900 lm
929001908702	MAS LEDtube 1200mm HO 26W 865 T5	865	6500 K	3900 lm	3900 lm
929001908802	MAS LEDtube 1500mm HO 26W 830 T5	830	3000 K	3600 lm	3600 lm
929001908902	MAS LEDtube 1500mm HO 26W 840 T5	840	4000 K	3900 lm	3900 lm
929001909002	MAS LEDtube 1500mm HO 26W 865 T5	865	6500 K	3900 lm	3900 lm

Temperature

Order Code	Full Product Name	T-Case Maximum (Nom)
929001908502	MAS LEDtube 1200mm HO 26W 830 T5	72.1 °C
929001908602	MAS LEDtube 1200mm HO 26W 840 T5	72.1 °C
929001908702	MAS LEDtube 1200mm HO 26W 865 T5	72.1 °C
929001908802	MAS LEDtube 1500mm HO 26W 830 T5	67.4 °C
929001908902	MAS LEDtube 1500mm HO 26W 840 T5	67.4 °C
929001909002	MAS LEDtube 1500mm HO 26W 865 T5	67.4 °C



MASTER LEDtube Mains T5

