



Extending the home feel onto the street

TownTune Asymmetric Lyre DR

As a luminaire family prepared for existing and scalable urban spaces, TownTune offers all the recent lighting innovations in terms of performance, quality of light and connectivity. The Philips TownTune family consists of three members: a central post top, an asymmetric spigot version and a version using an extending lyre post top bracket. Each of these three can be customized with a choice of different shapes for housing and an optional decorative ring which comes in two colors. By having these options available you can create your very own lighting signature and give distinctive identity to districts and cities. The luminaire family is also equipped with the QR code-based Philips Service tag, which supports installation and maintenance work and enables you to create your digital library of lighting assets and spare parts. TownTune also makes use of the Philips Ledgine optimized lighting platform ensuring that you always have the right amount and direction of light on your street. Furthermore, thanks to being SR (System Ready), TownTune is also future-proof and is ready to be paired with both standalone and advanced control and lighting software applications such as Interact City.

TownTune Asymmetric Lyre DR

Benefits

- Delivers visual comfort, and comfortable lighting experiences in urban spaces through its dedicatedly designed bowl
- Simple, pure design making it possible to integrate it into various urban environments and the option for customization through a wide range of accessories, lets cities create a unique light signature, which can also become part of the urban furniture in daytime
- Wide application coverage and offers great performance by using the latest Ledgine LED platform and providing access to a wide range of light distributions
- Ready to be paired with lighting control and software applications, by being equipped with the Philips SR (System Ready) socket
- Equipped with Service tag, a QR-based identification system that makes each luminaire uniquely identifiable and provides maintenance, installation and spare part information

Features

- Optimized Total Cost of Ownership and option of CLO (Constant Light Output)
- Excellent quality of light enabled by the Philips Ledgine optimized platform, and further optimization in L-Tune is also possible
- Choice of different shapes for housing (cone, dome), option of decorative ring and color (clear and golden)
- Ready to be paired with standalone lighting controls such as LumiStep, DynaDimmer, and LineSwitch and advanced system and software application such as Interact City
- Wide choice of lumen packages, ranging from 600 to 12,000 lumens
- Choice of color temperature: 3000 K (warm white) or 4000 K (neutral white)
- Long lifetime of 100,000 hours at minimum L80
- Suitable for new and retrofit installations
- IK08, IP66

Application

- Urban and residential areas
- City centers and main streets
- Cycle paths, footpaths and pedestrian crossings
- Car parks

Versions

BDP271, TownTune with lyre and decorative ring



TownTune Asymmetric Lyre DR

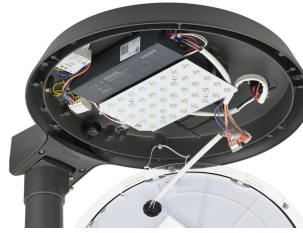
Product details



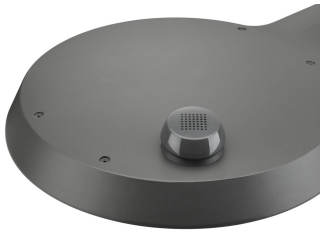
The cable is masked in the Lyre bracket by an easy to install plastic strip



Interact ready, motion sensor installed on bottom SR socket.



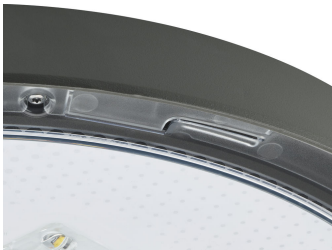
Connection and maintenance by opening the bowl (6 screws) and taking out the white frame.



Interact ready, CityTouch OLC for communication installed on SR socket.



Louver for obtrusive backlight available. Can also be used as retrofit.



By removing the six break-outs from the bowl, the decorative ring can be installed using a bayonet motion.



Dedicated designed bowl, virtually flat, with a unique internal texturing pattern for optimized visual comfort and a general feeling of well-being.

TownTune Asymmetric Lyre DR

Application Conditions

Maximum dim level	10%
-------------------	-----

Approval and Application

Mech. impact protection code	IK09
Surge Protection (Common/Differential)	Philips standard surge protection level

General Information

CE mark	CE mark
Optical cover/lens type	Polycarbonate bowl/cover UV-resistant
Driver included	Yes
Flammability mark	For mounting on normally flammable surfaces
Light source replaceable	Yes
Number of gear units	1 unit
Product Family Code	BDP271

Light Technical

Standard tilt angle side entry	-
Standard tilt angle posttop	0°
Upward light output ratio	0

Mechanical and Housing

Color	Dark gray
-------	-----------

Controls and Dimming

Order Code	Full Product Name	Dimmable
912300024207	BDP271 LED50-4S/740 DS50 CLO DDF2 62P	Yes
912300024211	BDP271 LED69-4S/830 II DM10 CLO SRT SRB	Yes
912300024464	BDP271 LED79-4S/830 II DS50 62P	No
912300024465	BDP271 LED50-4S/830 II DM10 62P	No

General Information (1/2)

Order Code	Full Product Name	Luminaire light beam spread	Light source color	Lamp family code	Lamp code	Optic type
912300024207	BDP271 LED50-4S/740 DS50 CLO DDF2 62P	152° x 155°	neutral white	LED50	50	Distribution symmetrical
912300024211	BDP271 LED69-4S/830 II	12° - 76° x 157°	white	LED69	10	Distribution medium

Order Code	Full Product Name	Luminaire light beam spread	Light source color	Lamp family code	Lamp code	Optic type
	DM10 CLO SRT SRB					
912300024464	BDP271 LED79-4S/830 II DS50 62P	152° x 155°	white	LED79	50	Distribution symmetrical
912300024465	BDP271 LED50-4S/830 II DM10 62P	77° - 11° x 156°	white	LED50	10	Distribution medium

General Information (2/2)

Order Code	Full Product Name	Service tag
912300024207	BDP271 LED50-4S/740 DS50 CLO DDF2 62P	Yes
912300024211	BDP271 LED69-4S/830 II DM10 CLO SRT SRB	-

Order Code	Full Product Name	Service tag
912300024464	BDP271 LED79-4S/830 II DS50 62P	-
912300024465	BDP271 LED50-4S/830 II DM10 62P	-

Initial Performance (IEC Compliant)

TownTune Asymmetric Lyre DR

Order Code	Full Product Name	Init. Corr. Color Temperature	Init. Color Rendering Index	Initial luminous flux	Order Code	Full Product Name	Init. Corr. Color Temperature	Init. Color Rendering Index	Initial luminous flux
912300024207	BDP271 LED50-4S/740 DS50 CLO DDF2 62P	4000 K	>70	3478 lm	912300024464	BDP271 LED79-4S/830 II DS50 62P	3000 K	>80	5840 lm
912300024211	BDP271 LED69-4S/830 II DM10 CLO SRT SRB	3000 K	>80	4836 lm	912300024465	BDP271 LED50-4S/830 II DM10 62P	3000 K	>80	3900 lm

