



Affordability and energy savings - all in one lamp

CorePro LEDtube InstantFit T5

The CorePro LED Type A - Ballast Driven InstantFit TLED is a great LED solution suitable for replacing T5 fluorescent lamps using the existing ballast.

Benefits

- Offers lowest cost of installation and easiest upgrade fluorescent T5 to LED technology
- True T5 size fits conventional applications
- 2ft and 3ft lamps operate on both HE and HO ballasts

Features

- Average life rating of 50,000 hours
- Philips proprietary safety features
- DLC, NSF and RoHS listed
- Wide beam angle for cove and direct/indirect applications

Application

- Education facilities and Offices
- Industrial and warehouses
- Parking lots and covered car parks
- Cove lighting

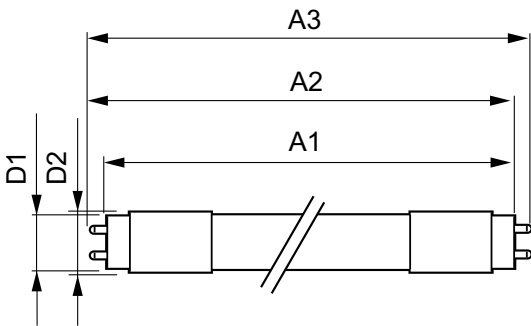
CorePro LEDtube InstantFit T5

Versions



LEDtube G5

Dimensional drawing



Product	D1	D2	A1	A2	A3
8T5HE/22-850/IF10/G/DIM 10/1	15.3 mm	18.4 mm	547.8 mm	554.9 mm	562 mm
14T5HE/46-850/IF21/G/DIM 10/1	15.3 mm	18.4 mm	1147.8 mm	1154.9 mm	1162 mm
8T5HE/22-840/IF10/G/DIM 10/1	15.3 mm	18.4 mm	547.8 mm	554.9 mm	562 mm
8T5HE/22-835/IF10/G/DIM 10/1	15.3 mm	18.4 mm	547.8 mm	554.9 mm	562 mm
14T5HE/46-835/IF20/G/DIM 10/1	15.3 mm	18.4 mm	1147.8 mm	1154.9 mm	1162 mm
11T5HE/34-840/IF15/G/DIM 10/1	15.3 mm	18.4 mm	847.8 mm	854.9 mm	862 mm
8T5HE/22-830/IF10/G/DIM 10/1	15.3 mm	18.4 mm	547.8 mm	554.9 mm	562 mm
14T5HE/46-830/IF20/G/DIM 10/1	15.3 mm	18.4 mm	1147.8 mm	1154.9 mm	1162 mm
11T5HE/34-835/IF14/G/DIM 10/1	15.3 mm	18.4 mm	847.8 mm	854.9 mm	862 mm
11T5HE/34-850/IF15/G/DIM 10/1	15.3 mm	18.4 mm	847.8 mm	854.9 mm	862 mm
11T5HE/34-830/IF14/G/DIM 10/1	15.3 mm	18.4 mm	847.8 mm	854.9 mm	862 mm
14T5HE/46-840/IF21/G/DIM 10/1	15.3 mm	18.4 mm	1147.8 mm	1154.9 mm	1162 mm

Controls and Dimming	
Dimmable	Yes
Operating and Electrical	
Input Frequency	40000-110000 Hz
Starting Time (Nom)	0.5 s
General Information	
Cap-Base	G5
Nominal Lifetime (Nom)	50000 h
Rated Lifetime (Hours)	50000 h
Switching Cycle	50000X
Light Technical	
Beam Angle (Nom)	200 °
Color Rendering Index (Nom)	82
Llmf At End Of Nominal Lifetime (Nom)	70 %
Rated Beam Angle	200 °
Temperature	
T-Ambient (Max)	45 °C
T-Ambient (Min)	-20 °C
T-Case Maximum (Nom)	70 °C
T-Storage (Max)	65 °C
T-Storage (Min)	-40 °C

Operating and Electrical

Order Code	Full Product Name	Voltage (Nom)	Power (Rated) (Nom)
476416	8T5HE/22-830/IF10/G/DIM 10/1	40-60 V	8 W
476424	8T5HE/22-835/IF10/G/DIM 10/1	40-60 V	8 W
476432	8T5HE/22-840/IF10/G/DIM 10/1	40-60 V	8 W
476440	8T5HE/22-850/IF10/G/DIM 10/1	40-60 V	8 W
476457	11T5HE/34-830/IF14/G/DIM 10/1	50-80 V	11 W
476465	11T5HE/34-835/IF14/G/DIM 10/1	50-80 V	11 W
476473	11T5HE/34-840/IF15/G/DIM 10/1	50-80 V	11 W
476481	11T5HE/34-850/IF15/G/DIM 10/1	50-80 V	11 W
476499	14T5HE/46-830/IF20/G/DIM 10/1	70-105 V	14 W
476507	14T5HE/46-835/IF20/G/DIM 10/1	70-105 V	14 W
476515	14T5HE/46-840/IF21/G/DIM 10/1	70-105 V	14 W
476523	14T5HE/46-850/IF21/G/DIM 10/1	70-105 V	14 W

Light Technical

Order Code	Full Product Name	Color Code	Correlated Color		Luminous Flux (Rated) (Nom)
			Temperature (Nom)	Luminous Flux (Nom)	
476416	8T5HE/22-830/IF10/G/DIM 10/1	830	3000 K	1000 lm	1000 lm
476424	8T5HE/22-835/IF10/G/DIM 10/1	835	3500 K	1000 lm	1000 lm
476432	8T5HE/22-840/IF10/G/DIM 10/1	841	4000 K	1050 lm	1050 lm
476440	8T5HE/22-850/IF10/G/DIM 10/1	850	5000 K	1050 lm	1050 lm
476457	11T5HE/34-830/IF14/G/DIM 10/1	830	3000 K	1400 lm	1400 lm
476465	11T5HE/34-835/IF14/G/DIM 10/1	835	3500 K	1400 lm	1400 lm

Order Code	Full Product Name	Color Code	Correlated Color		Luminous Flux (Rated) (Nom)
			Temperature (Nom)	Luminous Flux (Nom)	
476473	11T5HE/34-840/IF15/G/DIM 10/1	841	4000 K	1500 lm	1500 lm
476481	11T5HE/34-850/IF15/G/DIM 10/1	850	5000 K	1500 lm	1500 lm
476499	14T5HE/46-830/IF20/G/DIM 10/1	830	3000 K	2000 lm	2000 lm
476507	14T5HE/46-835/IF20/G/DIM 10/1	835	3500 K	2000 lm	2000 lm
476515	14T5HE/46-840/IF21/G/DIM 10/1	841	4000 K	2100 lm	2100 lm
476523	14T5HE/46-850/IF21/G/DIM 10/1	850	5000 K	2100 lm	2100 lm



CorePro LEDtube InstantFit T5

