



Philips Copenhagen City LED Gen2: comfortable, future-ready light for your city

Copenhagen City LED gen2 large & mega

The original Copenhagen luminaire was co-designed with Copenhagen's Office of City Architecture in the 1960s with the aim of enhancing the aesthetic appeal of the city through lighting. This timeless luminaire design comes in two types: Copenhagen City LED Gen2 is for city and residential areas where light comfort is important; Copenhagen LED Gen2 delivers high performance for road lighting applications. The second generation of Copenhagen City LED offers a very comfortable light distribution with minimum glare, enabled by a round LED engine, which follows the shape of the luminaire. The opal canopy option provides even more ways to enhance the impact of lighting. It is also perfect for city branding as it can be used to create both static and dynamic uplight with any color of light. The luminaire comes with a variety of suspensions and optics, offering maximum freedom in lighting design for downtown and residential area applications. It is also available with one or two Zhaga-D4i (ZD4i) System Ready (SR) sockets, which makes the luminaire future ready. This means Copenhagen City LED Gen2 is ready to pair with advanced control and lighting software applications such as Interact, or sensors such as the Philips Outdoor Sensor Bundle (OSB). And because the top SR socket is integrated into the canopy, it has no impact on the beautiful, clean design of the luminaire. Furthermore, every Copenhagen City LED Gen2 BRS761, BRS762 and BRS763 luminaire is uniquely identifiable, thanks to the Signify Service tag app. By simply scanning a QR code, placed inside the door of the mast or directly on the luminaire, you can instantly access the configuration of the luminaire. This makes maintenance and programming operations faster and easier and enables you to create a digital library of lighting assets and spare parts.

Copenhagen City LED gen2 large & mega

Benefits

- Unique aesthetic design with perfect LED integration and excellent finishing
- Very comfortable lighting with lifted LED engine, round shape, and optional satin diffuser
- City branding possibilities via static and dynamic uplight options in choice of colors
- Future-ready with Zhaga-D4i SR sockets to connect with Interact controls and sensors
- Service tag for easy installation and maintenance

Features

- 3 sizes to fit all mounting heights (small, large, and mega) and possibilities: side entry, post-top, catenary, or central fixing
- Choice of color temperatures and color rendering for different ambiances: 2200K, 2700K, 3000K and 4000K
- Efficacy up to 157 lm/W
- Marine salt protection
- 5-year standard warranty (option to extend up to 10 years)

Application

- Major city roads (mega and large versions)
- Downtown, city center streets (large)
- Residential streets, car parks, pedestrian places, and parks (small)

Versions

Copenhagen City LED gen2 large
centered



Copenhagen City LED gen2 large
suspended with bottom socket



Copenhagen City LED gen2 mega
centered



Copenhagen City LED gen2 large & mega

Versions

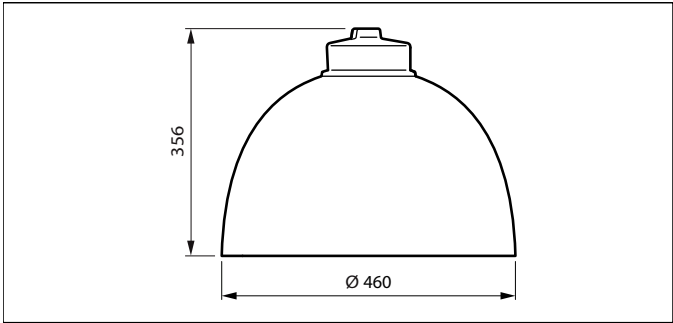
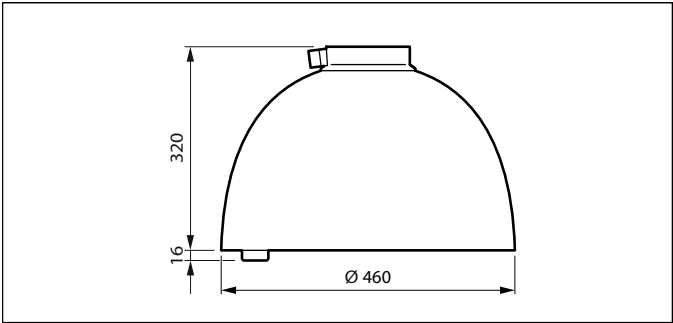
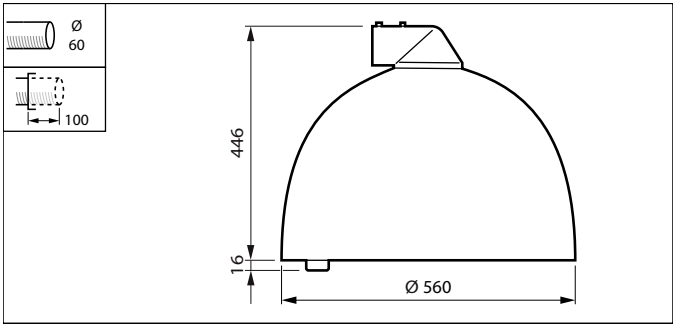
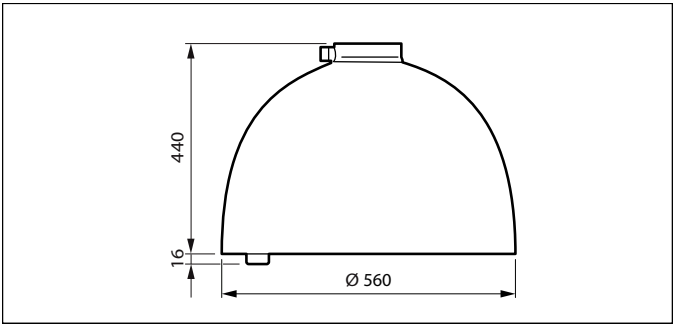
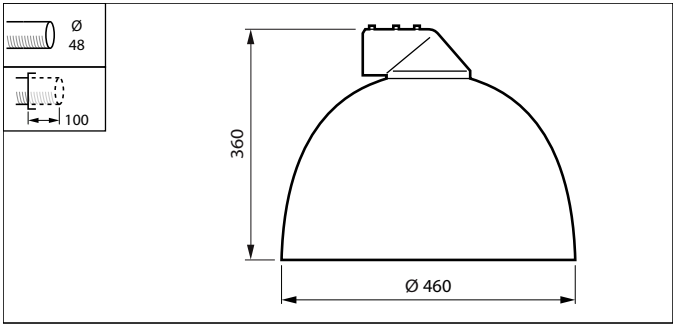
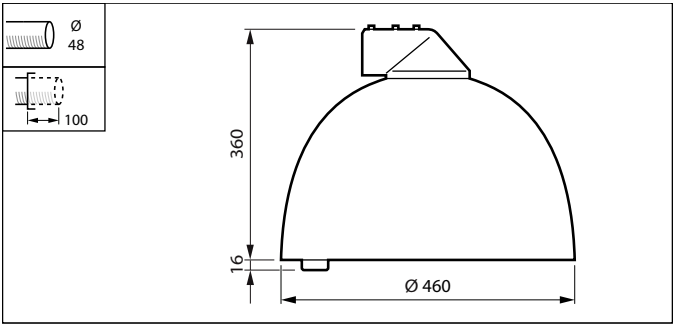


Copenhagen City LED gen2 large
side entry diam 48mm with bottom
socket



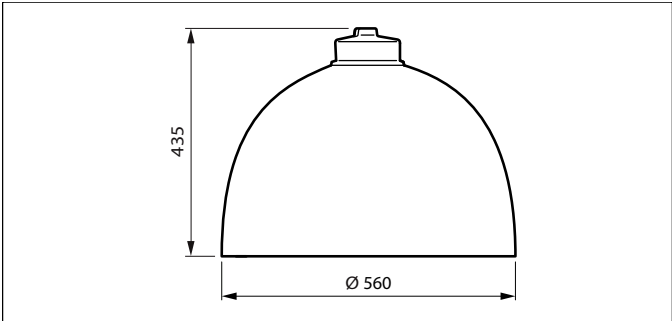
Copenhagen City LED gen2 large
side entry diam 48mm

Dimensional drawing



Copenhagen City LED gen2 large & mega

Dimensional drawing



General Information	
CE mark	Yes
Driver included	Yes
Flammability mark	-
Light source replaceable	Yes
Number of gear units	1 unit
Light Technical	
Luminaire light beam spread	-
Optical cover type	Flat glass
Optic type outdoor	Metronomis distribution wide
Standard tilt angle side entry	0°
Standard tilt angle posttop	0°
Upward light output ratio	0
Controls and Dimming	
Dimmable	Yes
Approval and Application	
Ingress protection code	IP66
Surge Protection (Common/ Differential)	Luminaire surge protection level until 6 kV differential mode and 6 kV common mode

General Information

Order Code	Full Product Name	Lamp family code	Product family code
919008634402	BDS762 LED100/830II GL-MDW CLOLS850 C10K	LED100	BDS762
919008634403	BSS762 LED100/830II GL-MDW CLOLS850 SRTB	LED100	BSS762
919008634407	BDS763 LED110/830II GL-MDW CLOLS850 C10K	LED110	BDS763
919008634409	BRS762 LED60/830II GL-MDW CLO-LS850SRTB	LED60	BRS762
919008634401	BRS762 LED60/830II GL-MDW CLO-LS850 C10K	LED60	BRS762
919008635354	BRS762 LED60/830 II GR MDW CLOLS850 C10K	LED60	BRS762
919008634408	BSS763LED110/830 II GL-MDW CLOLS850 SRTB	LED110	BSS763
919008634805	BRS763 LED140/727II GL-MDW SRTB 60S C10K	LED140	BRS763
919008634806	BRS763 LED140/722 II MDW SRTB 60S C10K	LED140	BRS763

Light Technical

Order Code	Full Product Name	Light	Correlated	Color	Luminous
		source	Color	rendering	
		color	Temperature	index	Flux
			(Nom)	(CRI)	
919008634402	BDS762	830	3000 K	≥80	8,134 lm
	LED100/830II GL-	warm			
	MDW CLOLS850	white			
	C10K				

Order Code	Full Product Name	Light	Correlated	Color	Luminous
		source	Color	rendering	
		color	Temperature	index	Flux
			(Nom)	(CRI)	
919008634403	BSS762 LED100/830II	830	3000 K	≥80	8,134 lm
	GL-MDW CLOLS850	warm			
	SRTB	white			

Copenhagen City LED gen2 large & mega

Order Code	Full Product Name	Light	Correlated	Color	Luminous
		source	Color	rendering	
		color	Temperature	index	Flux
			(Nom)	(CRI)	
919008634407	BDS763 LED110/830II	830	3000 K	≥80	8,820 lm
	GL-MDW CLOLS850	warm			
	C10K	white			
919008634409	BRS762	830	3000 K	≥80	4,872 lm
	LED60/830IIGL-	warm			
	MDW CLO-	white			
	LS850SRTB				
919008634401	BRS762 LED60/830II	830	3000 K	≥80	4,872 lm
	GL-MDW CLO-LS850	warm			
	C10K	white			
919008635354	BRS762 LED60/830 II	830	3000 K	≥80	4,872 lm
	GR MDW CLOLS850	warm			
	C10K	white			

Operating and Electrical

Order Code	Full Product Name	Power Consumption
919008634402	BDS762 LED100/830II GL-MDW CLOLS850 C10K	71 W
919008634403	BSS762 LED100/830II GL-MDW CLOLS850 SRTB	72 W
919008634407	BDS763 LED110/830II GL-MDW CLOLS850 C10K	79 W
919008634409	BRS762 LED60/830IIGL-MDW CLO-LS850SRTB	44 W
919008634401	BRS762 LED60/830II GL-MDW CLO-LS850 C10K	43.5 W

Mechanical and Housing

Order Code	Full Product Name	Housing Color
919008634402	BDS762 LED100/830II GL-MDW CLOLS850 C10K	White
919008634403	BSS762 LED100/830II GL-MDW CLOLS850 SRTB	White
919008634407	BDS763 LED110/830II GL-MDW CLOLS850 C10K	White
919008634409	BRS762 LED60/830IIGL-MDW CLO-LS850SRTB	White
919008634401	BRS762 LED60/830II GL-MDW CLO-LS850 C10K	White

Approval and Application

Order Code	Full Product Name	Mech. impact
		protection code
919008634402	BDS762 LED100/830II GL-MDW CLOLS850 C10K	IK07
919008634403	BSS762 LED100/830II GL-MDW CLOLS850 SRTB	IK07
919008634407	BDS763 LED110/830II GL-MDW CLOLS850 C10K	IK08
919008634409	BRS762 LED60/830IIGL-MDW CLO-LS850SRTB	IK07
919008634401	BRS762 LED60/830II GL-MDW CLO-LS850 C10K	IK07

Over Time Performance (IEC Compliant)

Order Code	Full Product Name	Driver failure rate at
		5000 h
919008634402	BDS762 LED100/830II GL-MDW CLOLS850 C10K	0.01 %
919008634403	BSS762 LED100/830II GL-MDW CLOLS850 SRTB	0.01 %

Order Code	Full Product Name	Light	Correlated	Color	Luminous
		source	Color	rendering	
		color	Temperature	index	Flux
			(Nom)	(CRI)	
919008634408	BSS763LED110/830 II	830	3000 K	≥80	8,820 lm
	GL-MDW CLOLS850	warm			
	SRTB	white			
919008634805	BRS763 LED140/727II	727	2700 K	≥70	11,480 lm
	GL-MDW SRTB 60S	warm			
	C10K	white			
919008634806	BRS763 LED140/722 II	722	2200 K	≥70	11,480 lm
	MDW SRTB 60S C10K	warm			
		white			

Order Code	Full Product Name	Power Consumption
919008635354	BRS762 LED60/830 II GR MDW CLOLS850 C10K	43.5 W
919008634408	BSS763LED110/830 II GL-MDW CLOLS850 SRTB	81 W
919008634805	BRS763 LED140/727II GL-MDW SRTB 60S C10K	98 W
919008634806	BRS763 LED140/722 II MDW SRTB 60S C10K	116 W

Order Code	Full Product Name	Housing Color
919008635354	BRS762 LED60/830 II GR MDW CLOLS850 C10K	Gray
919008634408	BSS763LED110/830 II GL-MDW CLOLS850 SRTB	White
919008634805	BRS763 LED140/727II GL-MDW SRTB 60S C10K	White
919008634806	BRS763 LED140/722 II MDW SRTB 60S C10K	Gray

Order Code	Full Product Name	Mech. impact
		protection code
919008635354	BRS762 LED60/830 II GR MDW CLOLS850 C10K	IK07
919008634408	BSS763LED110/830 II GL-MDW CLOLS850 SRTB	IK08
919008634805	BRS763 LED140/727II GL-MDW SRTB 60S C10K	IK08
919008634806	BRS763 LED140/722 II MDW SRTB 60S C10K	IK08

Order Code	Full Product Name	Driver failure rate at
		5000 h
919008634407	BDS763 LED110/830II GL-MDW CLOLS850 C10K	0.01 %
919008634409	BRS762 LED60/830IIGL-MDW CLO-LS850SRTB	0.01 %

Copenhagen City LED gen2 large & mega

Order Code	Full Product Name	Driver failure rate at 5000 h
919008634401	BRS762 LED60/830II GL-MDW CLO-LS850 C10K	0.01 %
919008635354	BRS762 LED60/830 II GR MDW CLOLS850 C10K	-
919008634408	BSS763LED110/830 II GL-MDW CLOLS850 SRTB	0.01 %

Order Code	Full Product Name	Driver failure rate at 5000 h
919008634805	BRS763 LED140/727II GL-MDW SRTB 60S C10K	-
919008634806	BRS763 LED140/722 II MDW SRTB 60S C10K	-

Application Conditions

Order Code	Full Product Name	Maximum dim level
919008634402	BDS762 LED100/830II GL-MDW CLOLS850 C10K	50%
919008634403	BSS762 LED100/830II GL-MDW CLOLS850 SRTB	50%
919008634407	BDS763 LED110/830II GL-MDW CLOLS850 C10K	50%
919008634409	BRS762 LED60/830IIGL-MDW CLO-LS850SRTB	50%
919008634401	BRS762 LED60/830II GL-MDW CLO-LS850 C10K	50%

Order Code	Full Product Name	Maximum dim level
919008635354	BRS762 LED60/830 II GR MDW CLOLS850 C10K	-
919008634408	BSS763LED110/830 II GL-MDW CLOLS850 SRTB	50%
919008634805	BRS763 LED140/727II GL-MDW SRTB 60S C10K	-
919008634806	BRS763 LED140/722 II MDW SRTB 60S C10K	-

Polar Wide Diagrams

Polar Normal (separate) - BRS762I - 919008634401

Polar Normal (separate) - BRS762I - 919008634402

Polar Normal (separate) - BRS762I - 919008634403

Polar Normal (separate) - BRS763I - 919008634408

Polar Normal (separate) - BRS763I - 919008634407

Polar Normal (separate) - BRS763I - 919008634805

Copenhagen City LED gen2 large & mega

