



High Performance LED replacements for conventional T5 lamps

T5

Philips T5 LED tubes offer an affordable, energy saving retrofit solution. The T5 lamps have been engineered to withstand the test of time with a 50,000-hour lifetime and a limited 5-year warranty to back it up. The lighting performance effectively replaces conventional fluorescent T5 HO or T5 HE lamps. Available in either InstantFit (Type A or Type C) or MainsFit (Type B / Ballast bypass), Philips T5 TLEDs provide a variety of options for any application.

Benefits

- Instantly reduces lighting costs
- True T5 size fits conventional applications
- One lamp for both HE and HO applications (2ft/3ft lamps)

Features

- Available in InstantFit plug-and-play (UL Type A) or MainsFit (Type B) Options
- MainsFit T5 (Type B/Ballast Bypass) are double-ended for quick installation
- Easy installation. Retrofit replacement of existing T5 lamps
- 2ft and 3ft InstantFit lamps operate on both HE and HO ballasts

Application

- Industrial & warehouses
- Retail & hospitality
- Parking lots and covered car parks

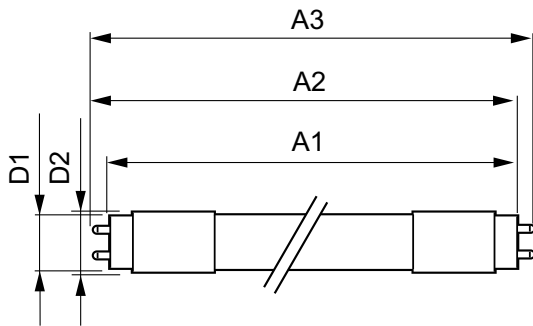
T5

Versions



G5

Dimensional drawing



Product	D1	D2	A1	A2	A3
24T5HO/46-840/ IF35/P/DIM 10/1	15.2 mm	17.8 mm	1147.8 mm	1154.9 mm	1162 mm
8T5HE/22-850/IF10/G/DIM 10/1	15.3 mm	18.4 mm	547.8 mm	554.9 mm	562 mm
24T5HO/46-835/ IF33/P/DIM 10/1	15.2 mm	17.8 mm	1147.8 mm	1154.9 mm	1162 mm
11T5HE/34-840/IF15/G/DIM 10/1	15.3 mm	18.4 mm	847.8 mm	854.9 mm	862 mm
11T5HE/34-830/IF14/G/DIM 10/1	15.3 mm	18.4 mm	847.8 mm	854.9 mm	862 mm
11T5HE/34-850/IF15/G/DIM 10/1	15.3 mm	18.4 mm	847.8 mm	854.9 mm	862 mm
11T5HE/34-835/IF14/G/DIM 10/1	15.3 mm	18.4 mm	847.8 mm	854.9 mm	862 mm
14T5HE/46-830/ IF20/G/DIM 10/1	15.3 mm	18.4 mm	1147.8 mm	1154.9 mm	1162 mm
8T5HE/22-830/IF10/G/DIM 10/1	15.3 mm	18.4 mm	547.8 mm	554.9 mm	562 mm
14T5HE/46-840/IF21/G/DIM 10/1	15.3 mm	18.4 mm	1147.8 mm	1154.9 mm	1162 mm
14T5HE/46-835/ IF20/G/DIM 10/1	15.3 mm	18.4 mm	1147.8 mm	1154.9 mm	1162 mm
8T5HE/22-835/IF10/G/DIM 10/1	15.3 mm	18.4 mm	547.8 mm	554.9 mm	562 mm
8T5HE/22-840/IF10/G/DIM 10/1	15.3 mm	18.4 mm	547.8 mm	554.9 mm	562 mm
14T5HE/46-850/IF21/G/DIM 10/1	15.3 mm	18.4 mm	1147.8 mm	1154.9 mm	1162 mm
24T5HO/46-850/ IF35/P/DIM 10/1	15.2 mm	17.8 mm	1147.8 mm	1154.9 mm	1162 mm

Controls and Dimming

Dimmable	Yes
----------	-----

Operating and Electrical

Starting Time (Nom)	0.5 s
---------------------	-------

General Information

Cap-Base	G5
Nominal Lifetime (Nom)	50000 h
Rated Lifetime (Hours)	50000 h
Switching Cycle	50000X

Light Technical

Color Rendering Index (Nom)	82
Llmf At End Of Nominal Lifetime (Nom)	70 %

Temperature

T-Ambient (Max)	45 °C
T-Ambient (Min)	-20 °C
T-Storage (Max)	65 °C
T-Storage (Min)	-40 °C

Operating and Electrical

Order Code	Full Product Name	Input Frequency	Voltage (Nom)	Power (Rated) (Nom)
929001283804	24T5HO/46-835/IF33/P/DIM 10/1	40000-80000 Hz	39-64 V	24 W
929001283904	24T5HO/46-840/IF35/P/DIM 10/1	40000-80000 Hz	39-64 V	24 W
929001284004	24T5HO/46-850/IF35/P/DIM 10/1	40000-80000 Hz	39-64 V	24 W
929001823104	8T5HE/22-830/IF10/G/DIM 10/1	40000-110000 Hz	40-60 V	8 W
929001823204	8T5HE/22-835/IF10/G/DIM 10/1	40000-110000 Hz	40-60 V	8 W
929001823304	8T5HE/22-840/IF10/G/DIM 10/1	40000-110000 Hz	40-60 V	8 W
929001823404	8T5HE/22-850/IF10/G/DIM 10/1	40000-110000 Hz	40-60 V	8 W
929001823504	11T5HE/34-830/IF14/G/DIM 10/1	40000-110000 Hz	50-80 V	11 W
929001823604	11T5HE/34-835/IF14/G/DIM 10/1	40000-110000 Hz	50-80 V	11 W
929001823704	11T5HE/34-840/IF15/G/DIM 10/1	40000-110000 Hz	50-80 V	11 W
929001823804	11T5HE/34-850/IF15/G/DIM 10/1	40000-110000 Hz	50-80 V	11 W
929001823904	14T5HE/46-830/IF20/G/DIM 10/1	40000-110000 Hz	70-105 V	14 W
929001824004	14T5HE/46-835/IF20/G/DIM 10/1	40000-110000 Hz	70-105 V	14 W
929001824104	14T5HE/46-840/IF21/G/DIM 10/1	40000-110000 Hz	70-105 V	14 W
929001824204	14T5HE/46-850/IF21/G/DIM 10/1	40000-110000 Hz	70-105 V	14 W

Light Technical (1/2)

Order Code	Full Product Name	Beam Angle (Nom)	Correlated Color			Luminous Flux (Nom)
			Color Code	Temperature (Nom)		
929001283804	24T5HO/46-835/IF33/P/DIM 10/1	-	835	3500 K		3300 lm
929001283904	24T5HO/46-840/IF35/P/DIM 10/1	-	840	4000 K		3500 lm
929001284004	24T5HO/46-850/IF35/P/DIM 10/1	-	850	5000 K		3500 lm
929001823104	8T5HE/22-830/IF10/G/DIM 10/1	200 °	830	3000 K		1000 lm
929001823204	8T5HE/22-835/IF10/G/DIM 10/1	200 °	835	3500 K		1000 lm
929001823304	8T5HE/22-840/IF10/G/DIM 10/1	200 °	840	4000 K		1050 lm
929001823404	8T5HE/22-850/IF10/G/DIM 10/1	200 °	850	5000 K		1050 lm
929001823504	11T5HE/34-830/IF14/G/DIM 10/1	200 °	830	3000 K		1400 lm

Order Code	Full Product Name	Beam Angle (Nom)	Correlated Color			Luminous Flux (Nom)
			Color Code	Temperature (Nom)		
929001823604	11T5HE/34-835/IF14/G/DIM 10/1	200 °	835	3500 K		1400 lm
929001823704	11T5HE/34-840/IF15/G/DIM 10/1	200 °	840	4000 K		1500 lm
929001823804	11T5HE/34-850/IF15/G/DIM 10/1	200 °	850	5000 K		1500 lm
929001823904	14T5HE/46-830/IF20/G/DIM 10/1	200 °	830	3000 K		2000 lm
929001824004	14T5HE/46-835/IF20/G/DIM 10/1	200 °	835	3500 K		2000 lm
929001824104	14T5HE/46-840/IF21/G/DIM 10/1	200 °	840	4000 K		2100 lm
929001824204	14T5HE/46-850/IF21/G/DIM 10/1	200 °	850	5000 K		2100 lm

Light Technical (2/2)

Order Code	Full Product Name	Luminous Flux (Rated) (Nom)	Rated Beam Angle
929001283804	24T5HO/46-835/IF33/P/DIM 10/1	3300 lm	-
929001283904	24T5HO/46-840/IF35/P/DIM 10/1	3500 lm	-

Order Code	Full Product Name	Luminous Flux (Rated) (Nom)	Rated Beam Angle
929001284004	24T5HO/46-850/IF35/P/DIM 10/1	3500 lm	-
929001823104	8T5HE/22-830/IF10/G/DIM 10/1	1000 lm	200 °

Order Code	Full Product Name	Luminous Flux (Rated) (Nom)	Rated Beam Angle
929001823204	8T5HE/22-835/IF10/G/DIM 10/1	1000 lm	200 °
929001823304	8T5HE/22-840/IF10/G/DIM 10/1	1050 lm	200 °
929001823404	8T5HE/22-850/IF10/G/DIM 10/1	1050 lm	200 °
929001823504	11T5HE/34-830/IF14/G/DIM 10/1	1400 lm	200 °
929001823604	11T5HE/34-835/IF14/G/DIM 10/1	1400 lm	200 °
929001823704	11T5HE/34-840/IF15/G/DIM 10/1	1500 lm	200 °

Order Code	Full Product Name	Luminous Flux (Rated) (Nom)	Rated Beam Angle
929001823804	11T5HE/34-850/IF15/G/DIM 10/1	1500 lm	200 °
929001823904	14T5HE/46-830/IF20/G/DIM 10/1	2000 lm	200 °
929001824004	14T5HE/46-835/IF20/G/DIM 10/1	2000 lm	200 °
929001824104	14T5HE/46-840/IF21/G/DIM 10/1	2100 lm	200 °
929001824204	14T5HE/46-850/IF21/G/DIM 10/1	2100 lm	200 °

Temperature

Order Code	Full Product Name	T-Case Maximum (Nom)
929001283804	24T5HO/46-835/IF33/P/DIM 10/1	-
929001283904	24T5HO/46-840/IF35/P/DIM 10/1	-
929001284004	24T5HO/46-850/IF35/P/DIM 10/1	-
929001823104	8T5HE/22-830/IF10/G/DIM 10/1	70 °C
929001823204	8T5HE/22-835/IF10/G/DIM 10/1	70 °C
929001823304	8T5HE/22-840/IF10/G/DIM 10/1	70 °C
929001823404	8T5HE/22-850/IF10/G/DIM 10/1	70 °C
929001823504	11T5HE/34-830/IF14/G/DIM 10/1	70 °C
929001823604	11T5HE/34-835/IF14/G/DIM 10/1	70 °C
929001823704	11T5HE/34-840/IF15/G/DIM 10/1	70 °C
929001823804	11T5HE/34-850/IF15/G/DIM 10/1	70 °C
929001823904	14T5HE/46-830/IF20/G/DIM 10/1	70 °C
929001824004	14T5HE/46-835/IF20/G/DIM 10/1	70 °C
929001824104	14T5HE/46-840/IF21/G/DIM 10/1	70 °C
929001824204	14T5HE/46-850/IF21/G/DIM 10/1	70 °C

