



Philips most advanced LED replacements for compact fluorescent 2-pin PL-S lamps

PL-S

Philips LED PL-S lamps make the transition to LED from CFL lamps as simple as replacing a lamp. The InstantFit (UL Type A) 2-pin PL-S LED lamps are available in a wide array of color temperatures. They quickly and effectively replace 13W 2-pin compact fluorescent PL-S lamps.

Benefits

- Minimizes overall lighting costs
- Offers cheapest and easiest upgrade to LED lighting technology
- Excellent compatibility with existing fluorescent ballasts

Features

- High energy efficiency, over 40% energy savings
- Long lifetime
- Easy plug-and-play installation. Retrofit replacement of existing CFL-ni lamps
- Conventional form factor fits into existing luminaires
- Durable polycarbonate construction

Application

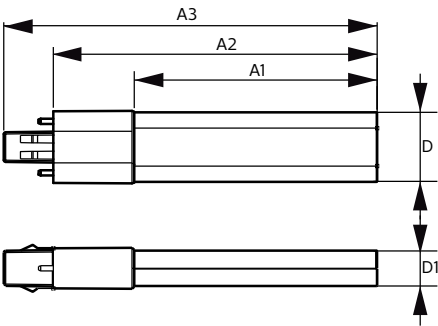
- Residential and multi-family complexes
- Retail and hospitality

Versions



GX23 Tube, single-ended Frosted

Dimensional drawing



Product	D	D1	A1	A2	A3
5PL-S/LED/13H/835/IF5/P/2P 20/1	1-1/4 in	5/8 in	4-1/4 in	5-11/16 in	6-9/16 in
5PL-S/LED/13H/840/IF5/P/2P 20/1	1-1/4 in	5/8 in	4-1/4 in	5-11/16 in	6-9/16 in
5PL-S/LED/13H/827/IF5/P/2P 20/1	1-1/4 in	5/8 in	4-1/4 in	5-11/16 in	6-9/16 in
5PL-S/LED/13H/830/IF5/P/2P 20/1	1-1/4 in	5/8 in	4-1/4 in	5-11/16 in	6-9/16 in

Approval and application	
Energy Consumption kWh/1000 h	- kWh
Controls and dimming	
Dimmable	No
Operating and electrical	
Input Frequency	50 to 60 Hz
Voltage (Nom)	120-277 V
Wattage Equivalent	13 W
Power (Nom)	5 W
Starting Time (Nom)	0.5 s
General information	
Cap-Base	GX23
Nominal Lifetime (Nom)	50000 h
Switching Cycle	50000
Light technical	
Beam Angle (Nom)	120 °
Color Rendering Index (Nom)	82
Llmf At End Of Nominal Lifetime (Nom)	70 %
Mechanical and housing	
Bulb Finish	Frosted
Bulb Shape	Tube, single-ended
Temperature	
T-Ambient (Max)	113 °F
T-Ambient (Min)	-4 °F
T-Case Maximum (Nom)	167 °F
T-Storage (Max)	149 °F
T-Storage (Min)	-40 °F

Light technical

Order Code	Full Product Name	Color Code	Correlated Color	Luminous Flux
			Temperature (Nom)	(Nom)
529511	5PL-S/LED/13H/827/IF5/P/2P 20/1	827	2700 K	520 lm
529560	5PL-S/LED/13H/830/IF5/P/2P 20/1	830	3000 K	540 lm
529578	5PL-S/LED/13H/835/IF5/P/2P 20/1	835	3500 K	560 lm
529586	5PL-S/LED/13H/840/IF5/P/2P 20/1	841	4000 K	580 lm

