



UniStrip G4 – Best in Class Linear LED Surface Mounted Luminaire for Exterior Fixed and Dynamic Architectural Lighting Applications

UniStrip G4

UniStrip G4 is a surface-mounted, exterior-rated LED luminaire that is designed for façade and outdoor architectural lighting applications. One family that fits all your needs, wall washing, grazing and also linear flood lighting. The robust mechanical and unique optical designs make it ideal for illuminating buildings facades, bridges, overpasses and any application that requires a linear lighting solution. Available in white, monochromatic colours, RGB, RGBW and tunable white and DMX control option available with up to 8 pixels (8IDs) to give architects and designers the freedom to explore a wide range of concepts and design with no limitations.

Benefits

- High and Low Power LEDs versions available
- Various spread lenses that fit all applications
- Adjustable brackets and through wiring for end-to-end connection

UniStrip G4

Features

- Six sub-families with power ranges from 3W to 120W
- DC and AC powered versions
- Narrow, medium, wide and asymmetric beams available
- Optional glare shields for more visual comfort

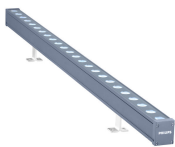
Application

- Bridges, Monuments, Facades
- Landscape
- Parks and Plazas

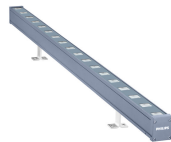
Warnings and Safety

- For outdoor use only

Versions

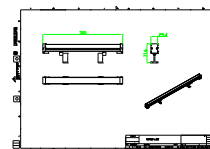
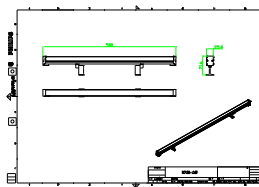


BCP381



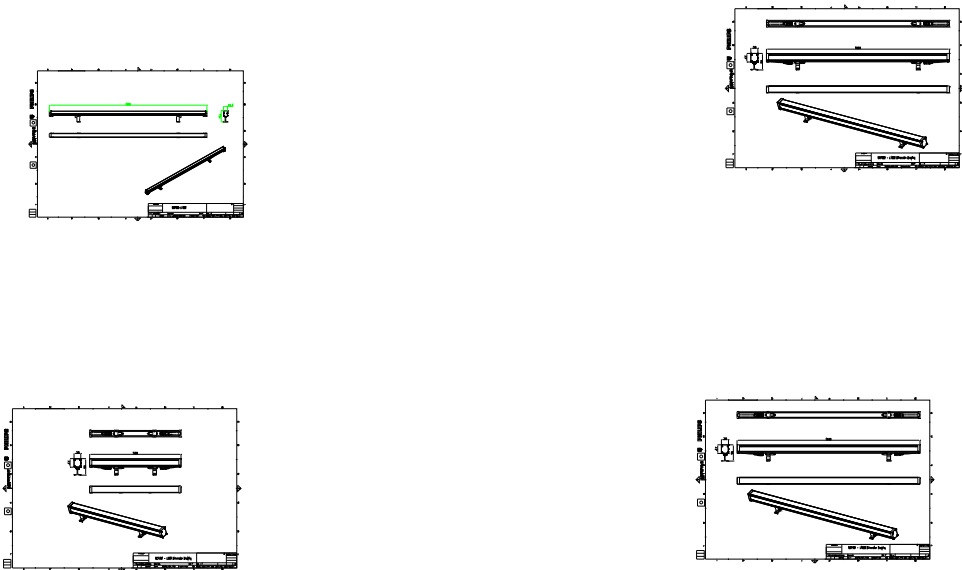
BCP381

Dimensional drawing



UniStrip G4

Dimensional drawing



Product details

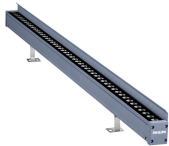
UniStrip G4 Detail Photo



UniStrip G4 Detail Photo



UniStrip G4 Detail Photo



UniStrip G4 Detail Photo



Product details

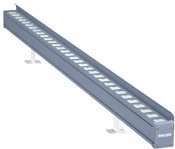
UniStrip G4 Detail Photo



159A3710 Detail Photo



UniStrip G4 Detail Photo



159A3691 Detail Photo



UniStrip G4 Detail Photo



UniStrip G4 Detail Photo



UniStrip G4 Detail Photo



UniStrip G4 Detail Photo



159A3731 Detail Photo



General Information	
CE mark	CE mark
Driver included	No
Mechanical and Housing	
Housing Color	Dark gray
Approval and Application	
Mech. impact protection code	IK06
Ingress protection code	IP66

General Information

Order Code	Full Product Name	Flammability mark	Light source replaceable
911401780122	BCP386 12LED RGBNW 24V A11 L30 DMX	-	-
911401780372	BCP386 30LED RGBNW 24V A11 L50 DMX	-	-
911401780602	BCP386 60LED RGBNW 24V 45 L100 DMX	-	-
911401780622	BCP386 60LED RGBNW 24V A11 L100 DMX	-	-
911401739342	BCP382 36LED 27K 24V A2 L100	For mounting on normally flammable surfaces	No

Order Code	Full Product Name	Flammability mark	Light source replaceable
911401739402	BCP382 36LED 30K 24V A2 L100	For mounting on normally flammable surfaces	No
911401738642	BCP381 12LED 30K 24V A2 L50	For mounting on normally flammable surfaces	No
911401738802	BCP381 24LED 30K 24V A2 L100	For mounting on normally flammable surfaces	No
911401739462	BCP382 36LED 40K 24V A2 L100	For mounting on normally flammable surfaces	No
911401738842	BCP381 24LED 40K 24V A2 L100	For mounting on normally flammable surfaces	No

Light Technical

Order Code	Full Product Name	Luminaire light beam		Correlated Color Temperature (Nom)	Optical cover type	Color rendering	
		spread	Light source color			index (CRI)	Luminous Flux
911401780122	BCP386 12LED RGBNW 24V A11 L30 DMX	-	Red, green, blue and white	-	Clear glass	-	145 lm
911401780372	BCP386 30LED RGBNW 24V A11 L50 DMX	-	Red, green, blue and white	-	Clear glass	-	375 lm
911401780602	BCP386 60LED RGBNW 24V 45 L100 DMX	-	Red, green, blue and white	-	Clear glass	-	750 lm
911401780622	BCP386 60LED RGBNW 24V A11 L100 DMX	-	Red, green, blue and white	-	Clear glass	-	730 lm
911401739342	BCP382 36LED 27K 24V A2 L100	16° x 35°	Warm white	2700 K	Clear flat	80	2,393 lm
911401739402	BCP382 36LED 30K 24V A2 L100	16° x 35°	Warm white	3000 K	Clear flat	80	2,393 lm
911401738642	BCP381 12LED 30K 24V A2 L50	16° x 35°	Warm white	3000 K	Clear flat	80	848 lm
911401738802	BCP381 24LED 30K 24V A2 L100	16° x 35°	Warm white	3000 K	Clear flat	80	1,663 lm
911401739462	BCP382 36LED 40K 24V A2 L100	16° x 35°	Neutral white	4000 K	Clear flat	80	2,584 lm
911401738842	BCP381 24LED 40K 24V A2 L100	16° x 35°	Neutral white	4000 K	Clear flat	80	1,796 lm

Operating and Electrical

Order Code	Full Product Name	Power Consumption
911401780122	BCP386 12LED RGBNW 24V A11 L30 DMX	3 W
911401780372	BCP386 30LED RGBNW 24V A11 L50 DMX	8 W
911401780602	BCP386 60LED RGBNW 24V 45 L100 DMX	15 W
911401780622	BCP386 60LED RGBNW 24V A11 L100 DMX	15 W

Order Code	Full Product Name	Power Consumption
911401739342	BCP382 36LED 27K 24V A2 L100	36 W
911401739402	BCP382 36LED 30K 24V A2 L100	36 W
911401738642	BCP381 12LED 30K 24V A2 L50	12 W
911401738802	BCP381 24LED 30K 24V A2 L100	24 W

Order Code	Full Product Name	Power Consumption
911401739462	BCP382 36LED 40K 24V A2 L100	36 W

Order Code	Full Product Name	Power Consumption
911401738842	BCP381 24LED 40K 24V A2 L100	24 W

Controls and Dimming

Order Code	Full Product Name	Dimmable
911401780122	BCP386 12LED RGBNW 24V A11 L30 DMX	Yes
911401780372	BCP386 30LED RGBNW 24V A11 L50 DMX	Yes
911401780602	BCP386 60LED RGBNW 24V 45 L100 DMX	Yes
911401780622	BCP386 60LED RGBNW 24V A11 L100 DMX	Yes
911401739342	BCP382 36LED 27K 24V A2 L100	No

Order Code	Full Product Name	Dimmable
911401739402	BCP382 36LED 30K 24V A2 L100	No
911401738642	BCP381 12LED 30K 24V A2 L50	No
911401738802	BCP381 24LED 30K 24V A2 L100	No
911401739462	BCP382 36LED 40K 24V A2 L100	No
911401738842	BCP381 24LED 40K 24V A2 L100	No

