

PHILIPS

Industry and
Retail lighting

TrueForce



NEW!

The perfect switch from HPI, SON or HPL to LED

The first Plug and Play LED lamp alternative for
Industrial and Retail high bay lighting

TrueForce Industrial and Retail. Save energy and provide the perfect light for every space



Introducing the first direct, Plug and Play alternative for traditional lamps operated in high bay applications. TrueForce Industrial and Retail is a cost-effective LED lamp that makes it easy to upgrade existing fixtures with LED. It replaces HPI/HQI, SON/HPS, HPL/HQL lamps in high bay lighting in industrial and large-scale retail applications and is fully compatible with BHL and BSN 250W and 400W gear. TrueForce delivers the right light distribution thanks to a choice of narrow and wide beam angle. Its improved colour rendering index (CRI 80) enhances industrial safety and productivity, and improves merchandise displays and customer experiences in retail. TrueForce Industrial and Retail is the simplest way to upgrade to LED and keep your initial investment low.



Upgrade your industrial lighting to LED and benefit from **instant saving and low initial costs**

- Plug and Play - hassle-free installation
- Fast payback within 2 years
- Easy adoption – safer and faster - no need to replace or change existing fixture
- Sustainability – low energy consumption
- Enhance comfort, safety and productivity
- Low heat dissipation – provide a cooler environment and reduce air-conditioning cost (especially retail and air-conditioned warehouses/factories)

Easy Plug & Play installation

		
HPL 250W	→	LED 88W
HPI 250W	→	LED 88W
SON 250W	→	LED 88W
HPL 400W	→	LED 145W
HPI 400W	→	LED 145W
SON 400W	→	LED 145W



TrueForce benefits.
Powerful reasons to switch to LED.



Energy saving
of 65% vs existing
conventional systems



Plug and Play – great electrical
compatibility, no need to
replace or modify the fixture



Reliable lifetime up
to 50,000 hours



Optically efficient, emits light
towards usage direction



Pleasant white light and CRI80
for higher safety and better
productivity

Save on industrial and retail lighting

TrueForce LED lamps are high quality alternatives for conventional lamps used in existing functional high bay applications. The low initial investment – lower than other LED solutions – and energy saving up to 65% add up to a payback typically within two years. It's also easy to install. Being a genuine direct alternative with plug and play installation, installers spend less time working at height, meaning installation is both safe and fast.

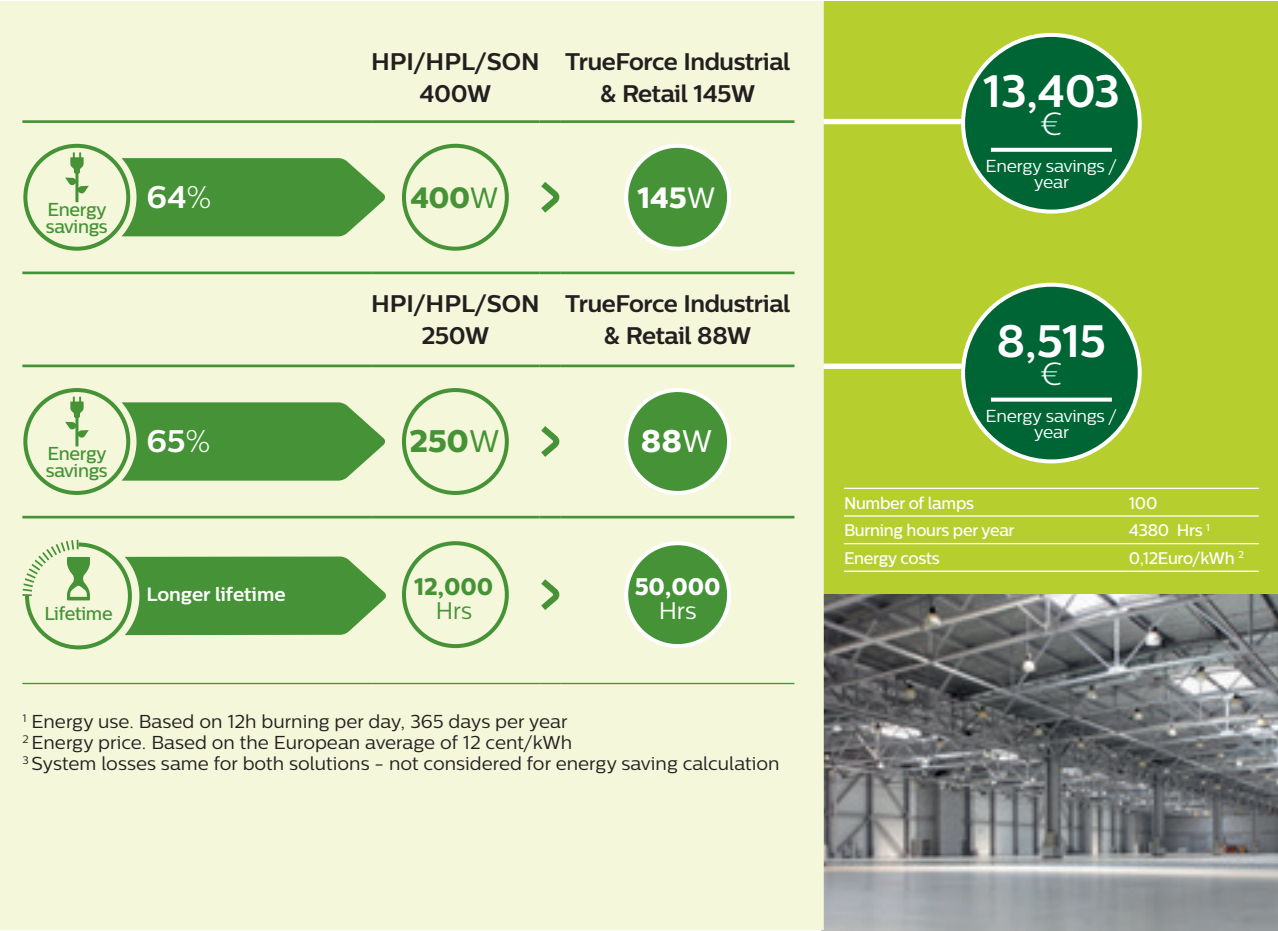
Right light distribution

With a choice of a narrow or wide beam and total of 11000 lumen (250W) and 20000 lumen (400W), TrueForce Retail and Industrial lamps distribute light to exactly where it's needed. The CRI 80 and a 4000K color temperature give a crispy white light to enhance comfort, safety and productivity. It combines the right lumen package with high system efficacy to provide the simplest LED solution for instant savings.

Low investment, long lifetime

With a low initial investment and fast payback time, TrueForce is the number one choice for anyone looking of up to 50,000 hours. Ignitor comfort logic by mimicking conventional lamp operation ensures that the ignitor will not function in existing installation. Whereas continuous ignition could affect lamp performance. These ensures low maintenance needs and has a five-year warranty. So you can look forward to long-term savings too.

Calculate energy savings



Design highlights



*The TrueForce LED does not need an ignitor to start functioning. However in a system where ignitor is already installed, when starting the LED lamp, the ignitor will function anyway. The "ignitor comfort logic" mimics conventional lamp operation and as a result ignitor stops working. This feature also allows that a system with a failed ignitor or without an igniter can continue working.



©2017 Philips Lighting Holding B.V. All rights reserved. This document contains information relating to Philips Lighting product portfolio. Note that the information provided is subject to change. Philips Lighting does not give any representation or warranty as to the accuracy or completeness of the information included herein and shall not be liable for any action in reliance thereon. The information presented in this document is not intended as any commercial offer and does not form part of any quotation or contract. Trademarks are the property of Koninklijke Philips N.V., Philips Lighting Holding B.V. or their respective owners.

philips.com/trueforce-led-lamps