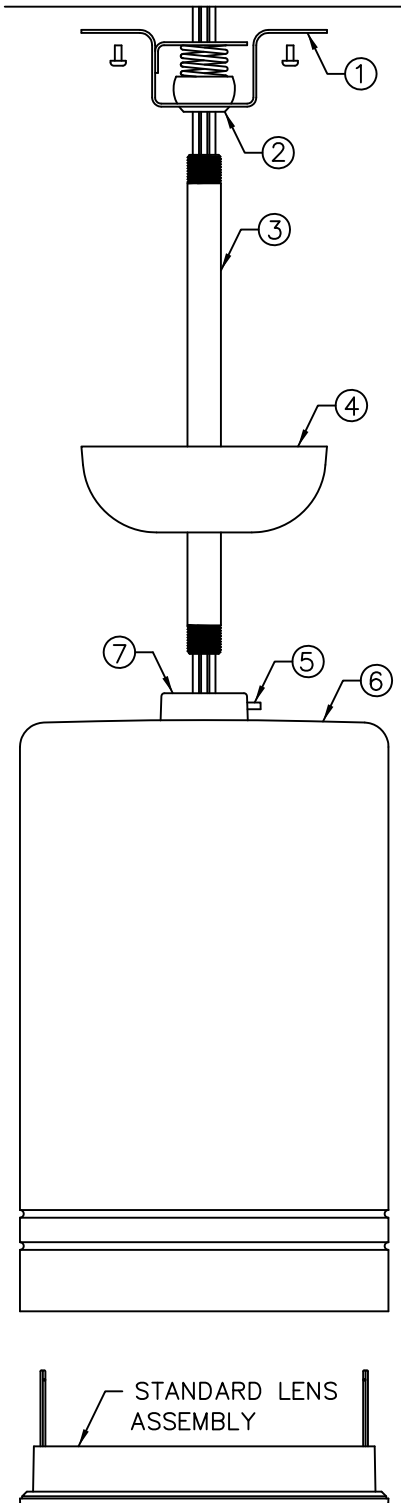


INSTALLATION INSTRUCTIONS

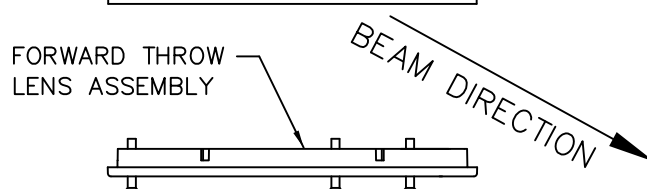
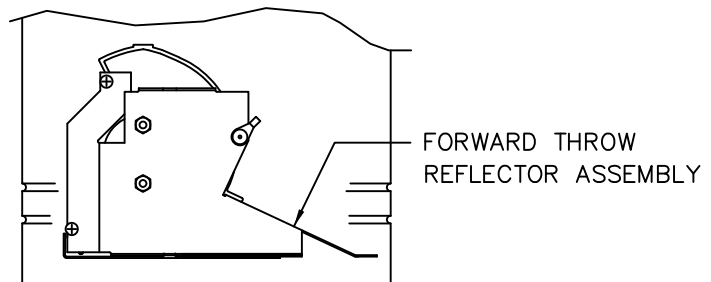
300 LINE CYLINDERS – PENDANT MOUNT

IMPORTANT: READ ALL INSTRUCTIONS BEFORE PERFORMING ANY WORK.
BE SURE ALL POWER IS OFF PRIOR TO INSTALLING LUMINAIRE.

WARNING: LUMINAIRE MUST BE GROUNDED IN ACCORDANCE WITH APPROPRIATE CODES. FAILURE TO DO SO MAY RESULT IN SERIOUS INJURY.



1. ROUTE THE THREE WIRES COMING FROM THE TOP OPENING OF THE HOUSING ASSEMBLY (ITEM 6) THROUGH THE PENDANT STEM (ITEM 3).
2. SCREW THE STEM INTO THE THREADED HOLE IN THE PENDANT ADAPTOR (ITEM 7) AND LOCK IN PLACE WITH THE LOCKING SCREW (ITEM 5).
3. PLACE CANOPY (ITEM 4) OVER STEM AND ALLOW TO REST ON ADAPTOR.
4. ROUTE THE WIRES THROUGH THE SWIVEL ASSEMBLY (ITEM 1) AND SCREW THE STEM INTO THE SWIVEL BALL (ITEM 2).
5. SECURE THE ENTIRE ASSEMBLY TO A RECESSED SPLICE BOX (BY OTHERS) USING THE SCREWS THAT COME WITH THE BOX.
6. MAKE ELECTRICAL CONNECTIONS. FIXTURE LINE (BLACK) TO SUPPLY LINE, COMMON (WHITE) TO COMMON AND GROUND TO GROUND.
7. IN CYLINDERS INCORPORATING FORWARD THROW OPTICS ONLY, AIM AS DESIRED. (SEE BEAM DIRECTION DIAGRAM BELOW.)
8. TIGHTEN SET SCREW IN SWIVEL BALL AND LOCK CANOPY ONTO MOUNTING BRACKET.
9. IN LENSED UNITS, REMOVE LENS ASSEMBLY IF LAMP INSTALLATION IS REQUIRED. INSTALL LAMP AND REPLACE LENS ASSEMBLY.



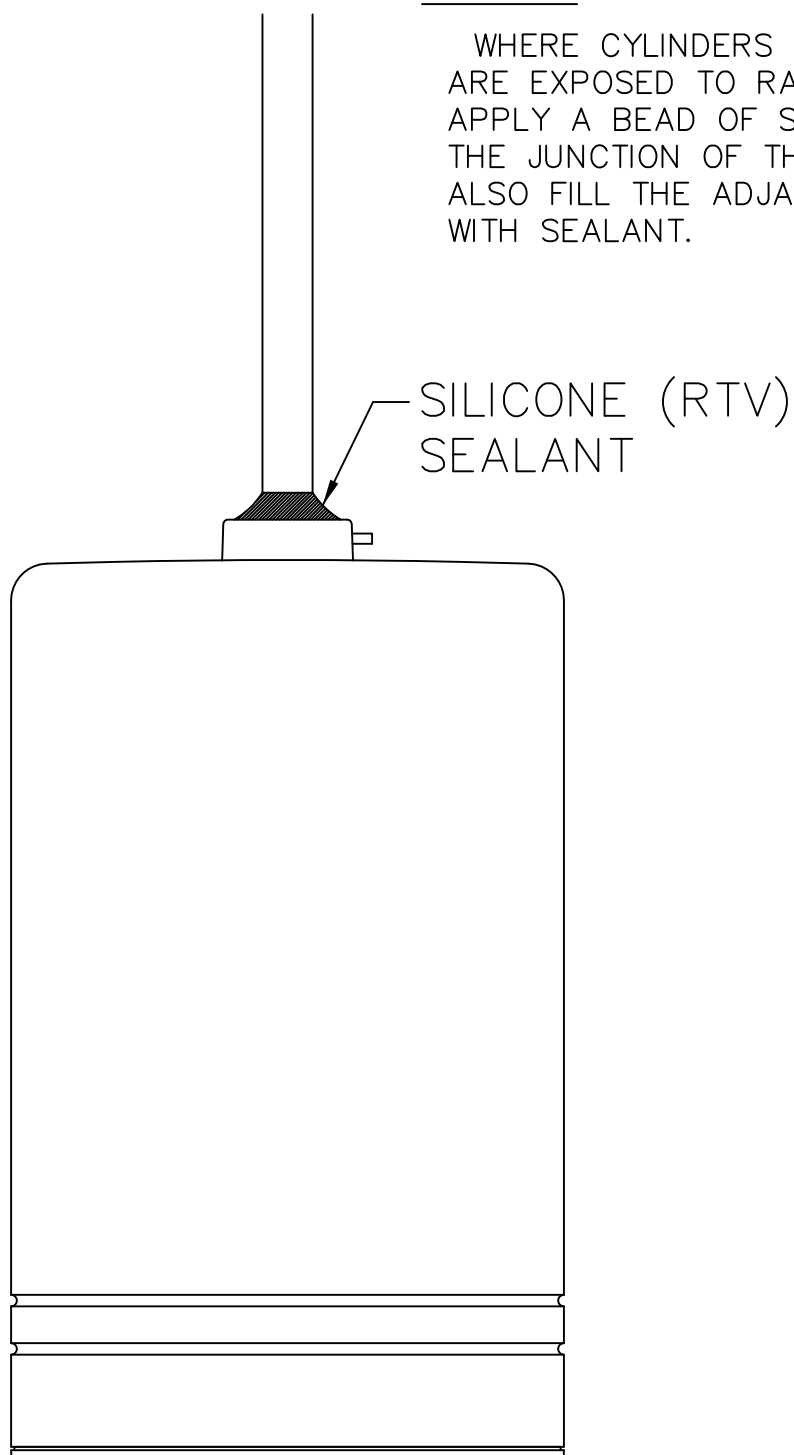
PHILIPS

INSTALLATION INSTRUCTIONS

300 LINE CYLINDERS – PENDANT MOUNT

NOTE:

WHERE CYLINDERS ARE MOUNTED IN AREAS THAT ARE EXPOSED TO RAIN OR HOSE DOWN CLEANING, APPLY A BEAD OF SILICONE (RTV) SEALANT TO THE JUNCTION OF THE STEM AND ADAPTOR. ALSO FILL THE ADJACENT LOCKING SCREW RECESS WITH SEALANT.



PHILIPS

© 2016 Philips Lighting Holding B.V. All rights reserved.

Philips Lighting North America
Corporation
200 Franklin Square Drive
Somerset, NJ 08873, USA

Philips Lighting Canada Ltd.
281 Hillmount Road,
Markham ON, Canada L6C 2S3

A815653/443561004040-A
2 OF 2