



**PHILIPS
LUMEC**

Urban

UrbanScape



Modern styling
meets advanced
lighting technology



Designed for simplicity, focused on performance

All you need to meet the most demanding
path and street lighting requirements

The Philips Lumec UrbanScape family of LED pendant and post top luminaires is ideal for enhancing the architectural identity of environments with a modern-day appeal. Perfectly scaled in both proportion and performance for the demands of various pedestrian and roadway applications, UrbanScape provides a consistent style for entire lighting projects.

Substantially more energy-efficient than HID luminaires thanks to industry leading LED technology, UrbanScape is the right choice for cities and utilities seeking cost effective, relamping-free outdoor lighting. Its IP66 rating, multiple lumen outputs and energy-saving control options are well suited to meet wide range of project requirements, including those of intersection lighting. In addition, exceptional thermal management extends LED component life while helping to maximize operations and maintenance savings.



Urban
UrbanScape
At a glance

Modern Styling

Bold Statment

UrbanScape LED luminaires allow you to create durable, visually appealing outdoor lighting projects while providing energy savings and a sense of security. They are well suited for municipal projects that range from simple recreational settings to more extensive boulevard lighting right through to architectural installations. Their minimalistic silhouette draws on avant-garde design, adding warmth and character to the surrounding environment and integrates especially well with forward-looking constructions and revitalized neighborhoods

State-of-the-art Optics

The optical system is composed of high-performance polymer refractor lenses which not only deliver pole spacing up to seven times the mounting height, but also optimize target lumens for superior lighting uniformity and intensity on the ground or street. The flat lens design eliminates uplight, which addresses the light pollution concerns of municipalities.

Environmentally Engineered

UrbanScape offers several sustainable features, starting with industry-leading LED drivers for minimal power loss and exceptional longevity. Luminaires are eco-designed for end-of-life disassembly and recycling, while LEDs contain no mercury nor hazardous materials. The end result is a reduced ecological footprint and the ability to project a greener image to stakeholders.

Advanced Technology

High-Performance LEDs

Both UrbanScape luminaire versions are optimized for LED lighting and powered by the LEDgine platform. LEDgine is compatible with the most advanced digital technology and lighting control options. Also, there are many lumen packages to choose from (up to 20,000 lm) with different combinations between the number of LEDs and the power of the driver. This provides the flexibility to meet virtually any outdoor lighting requirement by selecting the mix of energy savings, lifespan, light output and life-cycle cost best suited to your project.

Thermal Efficiency

The luminaire's innovative design includes electronic components located in the fitter. As a result, the driver and optional lighting controls are situated away from heat generated by the LEDs, ensuring improved thermal dissipation and, consequently, maximum system life of all components.

Flexibility of Connected Lighting

Every UrbanScape luminaire is controls-ready and able to accommodate the most advanced technology. Philips offers a range of outdoor lighting control solutions that feature superior flexibility, including real-time monitoring capabilities that help optimize the management of lighting assets. Designed to meet your specific needs, these systems are scalable from a few luminaires in a park to an entire network of luminaires throughout the city.



Recommended Applications

UrbanScape is valued for more than aesthetics. It is a family of cutting-edge LED luminaires engineered to cover a lot of ground by meeting the most demanding lighting requirements of multiple park, path and street lighting projects.

For architects and urban planners, this translates into better light rendering, improved ambience lighting and convenient style matching across post top and pendant applications.

For municipalities and utilities, this results in considerable savings on electricity and relamping costs, providing an exceptional return on investment for heritage-site revitalization projects and other low-energy, sustainable urban developments.



City
Streets



City
Centers



Parks
and
Recreation



Public
Areas



Pedestrian
Areas and
Bicycle Paths



Campuses



Green
Projects

UrbanScape LED pendant



Showing the way to cost-effective pedestrian and roadway lighting with a minimalistic look

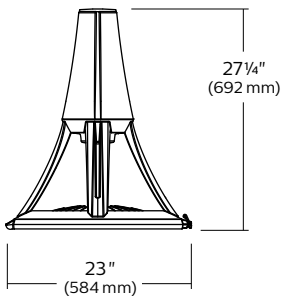
The UrbanScape LED pendant luminaire combines style and performance to create flexible, durable and attractive energy-saving solutions that blend in well with modern-styled urban architecture. Thanks to the open design it is capable of more powerful lumen packages suited to the higher visibility requirements of roads and intersections – up to 96 LEDs can deliver over 20,000 lumens, equivalent to 400W HID. The pendant model comes with a choice of flat or sag lens and an optional white opaque globe.

MSC

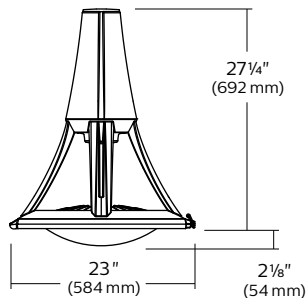
Urban
.....
UrbanScape
.....
Pendant
.....



Flat lens



Sag lens



EPA: 2.32 sq ft
Weight: 51 lbs (23 kg)

Key features

- Up to 96 high performance white LEDs
- Can deliver over 20,000 lumens equivalent to 400W HID
- Complete IP66 rated luminaire
- Dedicated LED optics (types 2, 3, 4 & 5)
- Operating lifespan of 100,000 hours. (with L70 lumen maintenance at 25°C)
- Ships standard with dimmable (0-10V) driver

UrbanScape LED post top

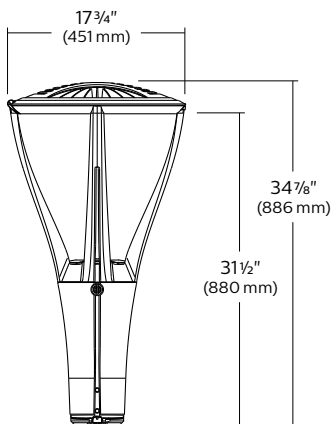


The height of style and performance for park and pathway lighting

The UrbanScape LED post top luminaire features flexible, robust energy-saving solutions for modern-styled urban architectural lighting. The post top model comes with a flat lens to highlight the thinness of the LEDs. The luminaire provides attractive lighting at night, adding appeal to the surroundings and promoting safe use of the environment.

MPTC

Urban
UrbanScape
Post Top



EPA: 1.7 sq ft
Weight: 32.2 lbs (14.6 kg)

Key features

- Up to 80 high performance white LEDs
- Many lumen packages available
- Complete IP66 rated luminaire
- Dedicated LED optics (types 2, 3, 4 & 5)
- Operating lifespan of 100,000 hours.
(with L70 lumen maintenance at 25°C)
- Ships standard with dimmable
(0-10V) driver
- Motion Response option available

Features & Benefits

Thermal Mastery

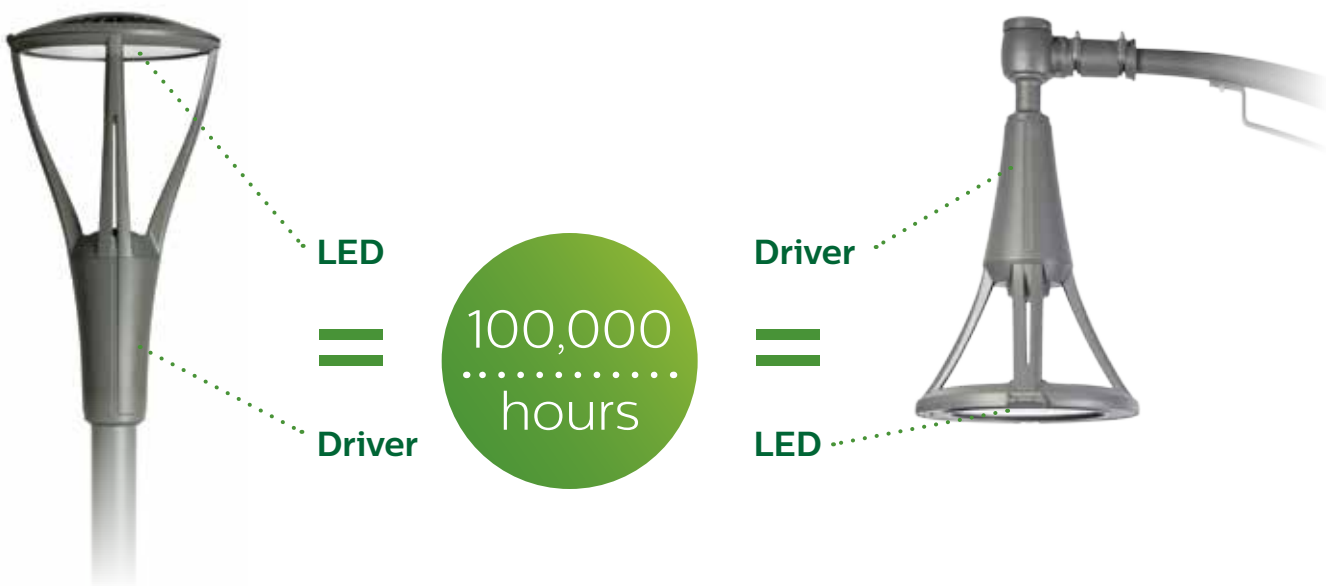
Features	Benefits
LED heat sink made of die-cast aluminum	→ Optimizes the LEDs' efficiency and life.
Placement of the electronic components in the fitter	→ Reduces degradation of light output over the lifespan. Operating lifespan of 100,000 hours L70 at 25°C.
Optimal thermal design	→ Suitable for operation in an ambient temperature of up to 40°C / 104°F. UL certified (Runs cool in almost every climate).

Unparalleled performance in thermal management

Because of the high efficiency thermal design, both LEDs and driver achieve 100,000 hours L70 at 25°C.

Longevity

Our longevity story is more than just using LEDs. During the design phase, industrial designers and engineers made sure that critical components (such as the LED board and the driver) are isolated from each other, located in the fixture to better manage the heat and maximize overall system life.



Sustainability

Features	Benefits
0% uplight (with flat lens) (full cut-off / U=0 (bug rating))	→ Reduces light pollution, dark sky friendly.
Complete LED luminaire rated IP66	→ Protects the light source and electrical components from degradation caused by environmental pollutants such as rain, ice, snow, dust, sand, etc. → Improved lifetime.
Energy efficient luminaire	→ Uses less energy compared to HID luminaires. → The Philips Xitanium driver offers market leading power management and longevity due to superior heat management.
Made of sustainable materials (93% of the product can be recycled)	→ Projects a green image that pleases citizens and investors.
Eco-designed	→ Can be taken apart upon end-of-life for recycling.

Photometry

Features	Benefits
Flat lens of the luminaire	→ 0% uplight (full cut-off / U=0 (bug rating)).
Optical system composed of high performance refractor lenses	→ Spacing up to 7 x mounting height (depending on the luminaire version chosen and your application). → Optimizes target lumens for superior lighting uniformity and intensity.
Dedicated LED optics / types 2, 3, 4 & 5	→ Provides high quality, uniform light distribution. → Better control on light trespass.

LEDs

UrbanScape's light engine uses the latest LED technology to answer the needs of the most demanding projects and industry standards. LEDs deliver a high color rendering index (CRI) and exceptional lumen output at an optimal color temperature required by municipalities and various type of applications.

Advanced Outdoor Lighting Solutions

Control ready solutions

Features	Benefits
Ships standard with 0-10V driver	→ Dimming compatible.
Optional 5-pin receptacle for dimming	→ Control ready for future proofing. → Compatible with dimming control as per ANSI C136.41.

Luminaire solutions

Features	Benefits
Dynadimmer control ready	→ Schedules and dimming optimized for safety and economy. → Pre-programmed scenarios make the Dynadimmer a simple solution.
Motion Response option available with post-top version	→ Ensure maximum light level when needed without compromising savings. → Efficient sensing with wide angle coverage and adjustable aiming.
Constant light output	→ Management of light output to maintain lighting uniformity and intensity.

Site solutions

Different options are available according to your needs. Please contact us for more information.

City solutions

Features	Benefits
CityTouch	→ Gives you the power to make the lighting in your city dynamic, intelligent and totally flexible. → Makes planning, analyzing and managing your lighting infrastructure very simple. → Dimming capability through industry standard twist lock receptacle.

Service tag



Making LED maintenance operations easier and faster

UrbanScape LED luminaires come standard with Philips Service tag, a unique QR based identification system placed on products, poles and boxes they are delivered in. After installing the luminaire, simply scan the tag from the app to register the product. By registering the product, you are sure Philips will provide support throughout the lifetime of the product.

- Provides easy access to lighting component information at the right time and place.
- Enables more effective maintenance operations by identifying spare parts

www.philips.com/servicetag

LED Lifespan

Control ready solutions

Features	Benefits
Philips LEDgine platform	Reduced maintenance costs, lower electrical bills, superior photometric performance, reduces light trespass and uplight.
Up to 80 high performance white LEDs (96 in the pendant version only)	Creates ambience and makes architecture look more authentic.
The LEDgine comes with different driver possibilities and different LED boards	Ensures maximum reliability and safety for drivers and citizens
Available in standard warm and neutral white 3000K and 4000K, 70 CRI	Optimized scenarios offering superior longevity and energy savings or maximum lumen output.
	Produces improved color rendering vs. HID for greater perception.
	Creates different lighting ambiances.

Post top

Luminaire ordering guide

Example: MPTC-42W32LED4K-T-LE3-120-CDMGM25-PH8-BKTX

Series	LED Module	CCT	Gen.	Optics	Voltage	Driver	Luminaire option	Mounting	Pole	Finish
MPTC			G2							
MPTC UrbanScape LED post top luminaire	35W32LED3K 55W32LED3K 72W32LED3K 97W32LED3K 55W48LED3K 80W48LED3K 108W48LED3K 140W48LED3K 70W64LED3K 110W64LED3K 90W80LED3K 135W80LED3K	3K 3000K 4K 4000K	G2 Gen 2	LE2 Type II (ASYM) flat lens LE3 Type III (ASYM) flat lens LE3W Type III (ASYM) wide flat lens LE4 Type IV (ASYM) flat lens LE5 Type V (SYMM) flat lens	120 120V 208 208V 240 240V 277 277V 347 347V 480 480V	CDMG Dynadimmer for standard dimming CLO Pre-set driver to manage lumen depreciation AST Pre-set driver for progressive start-up OTL Pre-set driver to signal end of life of the lamp DALI Pre-set driver compatible with the DALI control system DMG 0-10 volt	HS House Side Shield OVR Dynadimmer override function PH8 Photoelectric cell PH9 Shorting Cap PHXL Photoelectric cell, extended life RCD 5-Pin receptacle for dimming photoelectric cell RCD7 7-Pin receptacle for photoelectric cell TN3 Fitter to fit over a 3" (76 mm) O.D. by 4" (102 mm) long tenon TN3.5 Fitter to fit over a 3½" (89 mm) O.D. by 4" (102 mm) long tenon	Consult the Philips web site for details and the complete line of Mountings	Consult the Philips web site for details and the complete line of Poles	BE2TX BE6TX BE8TX BG2TX BKTX BRTX GN4TX GN6TX GN8TX GNTX GR GY3TX NP RD2TX RD4TX TG TS WHTX

Pendant

Luminaire ordering guide

Example: MSR-145W64LED4K-T-LE3F-120-CDMGM25-SMA-RCD-BKTX

Series	Lamp	CCT	Gen.	Optics	Lens	Voltage	Driver	Adapter	Luminaire opt	Mounting	Pole	Finish
MSC			G2									
MSC UrbanScape LED pendant luminaire	35W32LED 55W32LED 72W32LED 97W32LED 55W48LED 80W48LED 108W48LED 140W48LED 70W64LED 110W64LED 145W64LED 195W64LED 90W80LED 135W80LED 180W80LED 110W96LED 160W96LED 215W96LED	3K 3000K 4K 4000K	G2 Gen 2	LE2 Type II (ASYM) LE3 Type III (ASYM) LE3W Type III (ASYM) wide flat lens LE4 Type IV (ASYM) LE5+ Type V (SYMM)	F Flat lens S Sag lens	120 120V 208 208V 240 240V 277 277V 347 347V 480 480V	CDMG Dynadimmer for standard dimming CLO Pre-set driver to manage lumen depreciation AST Pre-set driver for progressive start-up OTL Pre-set driver to signal end of lamp life DALI Pre-set driver compatible with the DALI control system DMG 0-10 volt	MA1 1¼" NPT threaded hole adapter accepting threaded tube MA2 1½" NPT threaded hole adapter accepting threaded tube. SMA Decorative retro side-mounted cast-aluminum, accepts tubes from 1½/8" to 2 3/8" SMB Decorative contemporary side-mounted cast-aluminum, accepts tubes from 1½/8" to 2 3/8"	BX Bird repellent DH Opaque decorative hood HS House Side Shield PH8 Photoelectric cell PH9 Shorting Cap PHXL Photoelectric cell, extended life RCD 5-Pin receptacle for dimming photoelectric cell RCD7 7-Pin receptacle for photoelectric cell SP2 20kV/20kA Surge Protector (optional)	Consult the Philips web site for details and the complete line of Mountings	Consult the Philips web site for details and the complete line of Poles	BE2TX BE6TX BE8TX BG2TX BKTX BRTX GN4TX GN6TX GN8TX GNTX GR GY3TX NP RD2TX RD4TX TG TS WHTX

Luminaire options

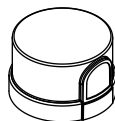
Pendant and Post top



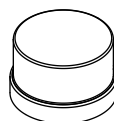
RCD 5-Pin receptacle for dimming photoelectric cell



RCD7 7-Pin receptacle for dimming photoelectric cell



PH8 Photoelectric cell



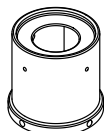
PH9 Shorting Cap



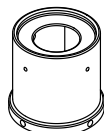
HS House Side Shield

PHXL Photoelectric cell, extended life

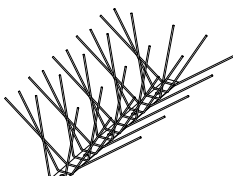
Pendant only



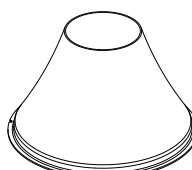
TN3 Fitter to fit over a 3" (76 mm) O.D. by 4" (102 mm) long tenon



TN3.5 Fitter to fit over a 3 1/2" (89 mm) O.D. by 4" (102 mm) long tenon



BX Bird repellent



DH Opaque decorative hood

OVR Dynadimmer override function

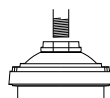
Driver options

Pendant and Post top

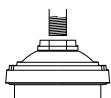
- CDMG** Dynadimmer for standard dimming
- CLO** Pre-set driver to manage lumen depreciation
- AST** Pre-set driver for progressive start-up
- OTL** Pre-set driver to signal end of life of the lamp
- DMG** 0-10 volt

Adapters

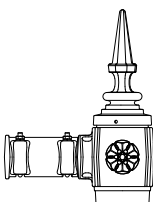
Pendant Only



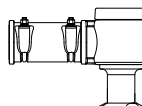
MA1 1 1/4" NPT threaded hole adapter accepting a threaded tube.



MA2 1 1/2" NPT threaded hole adapter accepting a threaded tube.



SMA Decorative retro side-mounted cast-aluminum, accepts tubes from 1 5/8" to 2 3/8"

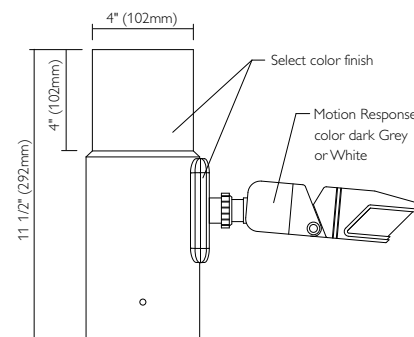


SMB Decorative contemporary side-mounted cast-aluminum, accepts tubes from 1 5/8" to 2 3/8"

Luminaire options

Post top only

Motion Response: Tenon mount motion response provides 270° coverage on an adjustable knuckle. The coverage equals to up to 6 times the sensor height. It is an option offered jointly with the Dynadimmer OVR option, that can bring the light up to 100% when the motion response is triggered. It is available in a single or double mounting option. The tenon mount is fully rotatable 360°.



Meet the most demanding street lighting requirements

See how **Philips UrbanScape LED** luminaires provide attractive lighting at night, add modern styling to the surroundings and promote safe use of the environment.

Visit philips.com/luminaires for more information.

Prior to ordering, consult specification sheets for the most current information, notes, and exclusions.