

INSTALLATION INSTRUCTIONS

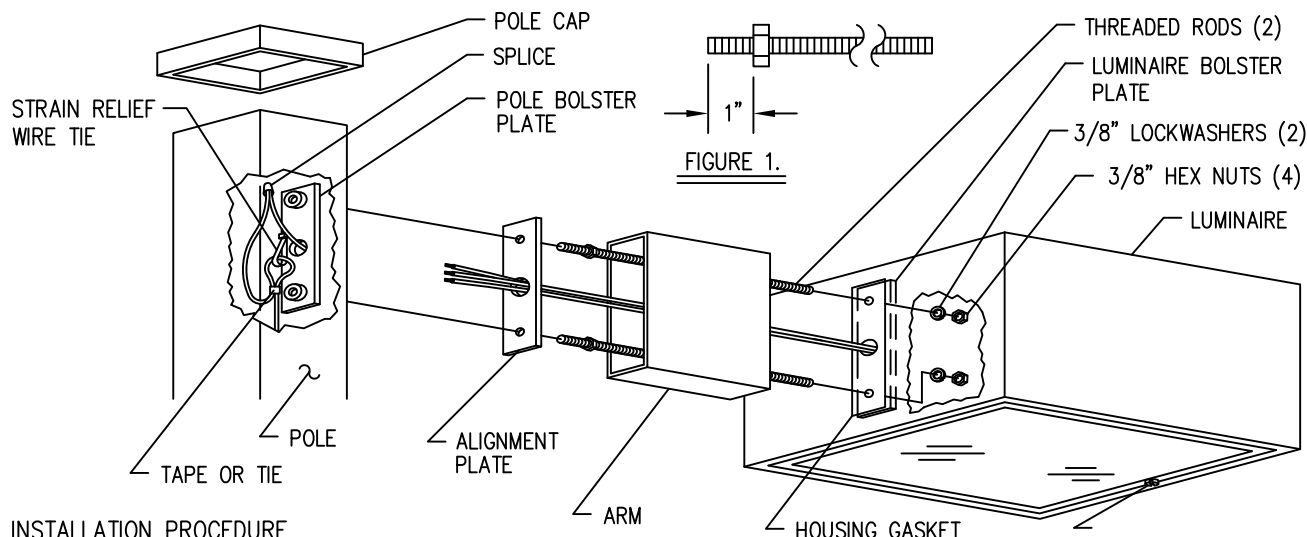
14" AND 18" ECOLUME MOUNTED ON SQUARE AND CRUCIFORM POLES WITH ARM



EMCO LIGHTING
1611 Clovis Barker Road
San Marcos, TX 78666
www.sitelighting.com

443561005290 REV E (was A815273)

SHEET 1 OF 2
© COPYRIGHT 2008 EMCO LIGHTING



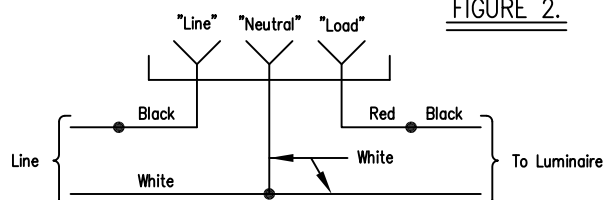
INSTALLATION PROCEDURE

1. Remove luminaire from carton and check for any visible damage. All damage claims must be filed with delivery carrier.
2. Open luminaire door by twisting (1) captive screw with a flat blade screwdriver and hinging door downward.
3. Remove luminaire reflector by twisting the captive screw at each side with a flat blade screwdriver. Unplug reflector from housing by grasping the nylon plug, squeezing together plug release tabs, and gently pulling plug from nylon receptacle.
4. Remove hardware package taped inside luminaire.
5. Check the markings on the luminaire to make sure it is of the correct lamp type, wattage, and input voltage. If luminaire is marked to indicate it uses a "quad tap" ballast refer to step 6.
6. If luminaire uses a quad tap ballast, it is factory wired for 277V. Should 120, 208 or 240V be desired, connect the tap to the desired input voltage as marked on the ballast coil or leads.
7. Place pole base edge on concrete base close to projecting anchor bolts.
8. Place saw-horse or similar support under pole upper end raising it sufficiently to allow for easy mounting of luminaire.
9. Check housing gasket to be certain it is centered on luminaire holes.
10. Thread (1) hex nut onto each threaded rod, until nut is 1" from end of rod. (See figure 1).
11. Place pole bolster plate inside pole, with strain relief wire tie positioned as shown lining up holes.
12. Put nut ends of threaded rods through holes in alignment plate, lining up wireway holes, and thread rods into pole bolster plate. Tighten snugly.
13. Pull luminaire leads through arm, alignment plate, pole, and pole bolster plate.
14. Square luminaire and arm to pole and secure to threaded rods with 3/8" nuts and lockwashers inside luminaire. Tighten to 25 ft.-lbs.
15. Pull field wires through pole allowing sufficient length leads above pole top to make electrical connections.
16. Splice field wires to luminaire leads (Input and Grounding). Fasten field wires to strain relief wire tie.
17. Install pole cap.
18. Re-install reflector in luminaire, making sure reflector is oriented properly for your application.
NOTE: IF APPLICATION REQUIRES SEMI-CUTOFF (WIDE DISTRIBUTION) ON 18" VERTICAL LAMP (QV) REFLECTOR, SEE OTHER SIDE FOR INSTALLATION INSTRUCTIONS.
19. Install proper lamp per luminaire markings, tightening lamp securely. (If supplied with lamp stabilizer, loosen stabilizer screw and move stabilizer before installing lamp. Position stabilizer against installed lamp and tighten screw.)
20. Close luminaire door.
21. Installing photocontrol (where applicable). Loosen two screws on top of photocontrol receptacle and rotate receptacle until "North" arrow on receptacle points North. Make sure receptacle is centered in its mounting hole, tighten screws and install photocontrol.
22. If a pole top photocontrol is used, connect it per figure 2.
23. Erect pole (See Pole Installation Instructions).
24. Energize system.

CAUTION

USE CLEAR LAMP ONLY
Clear lamp required for optimum
photometric performance

FIGURE 2.



INSTALLATION INSTRUCTIONS

ECOLUME LUMINAIRE SERIES



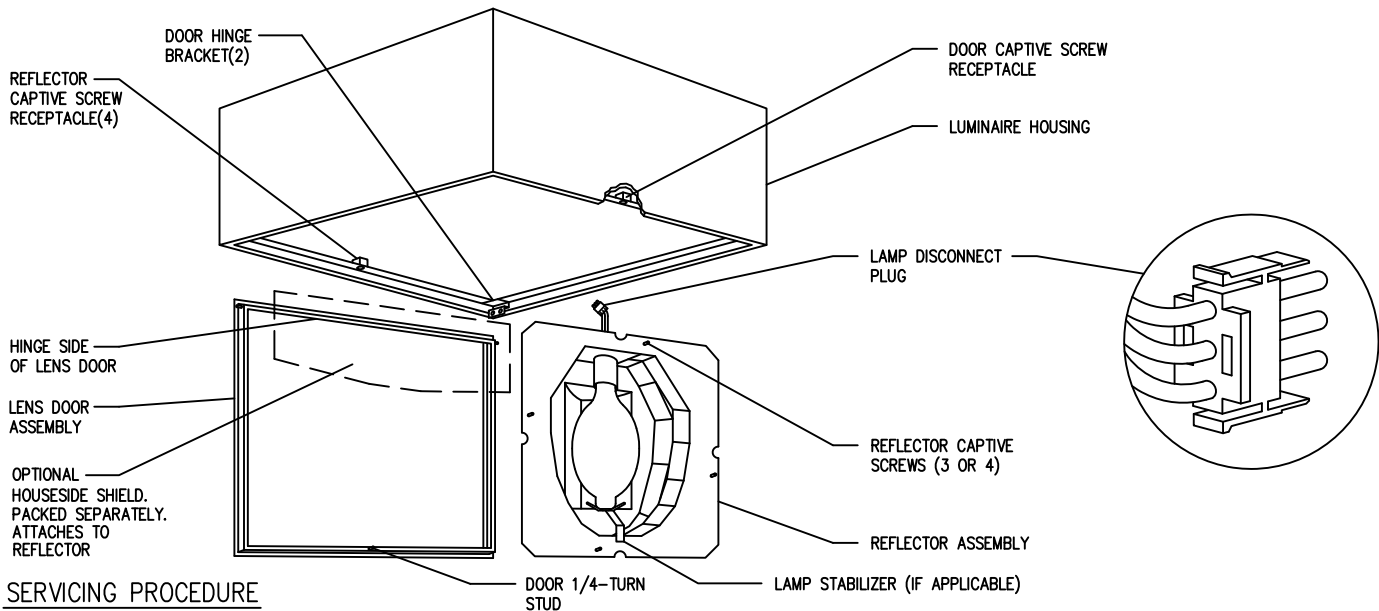
EMCO LIGHTING
1611 Clovis Barker Road
San Marcos, TX 78666
www.sitelighting.com

443561005290 REV E (was A815273)

SHEET 2 OF 2

© COPYRIGHT 2008 EMCO LIGHTING

GENERAL: 14" and 18" luminaires consist of a housing made from sheet aluminum. The housing is equipped with a lens, reflector and a removable chassis assembly to which the ballast and related electrical components are mounted. Lens doors are mounted with a captive screw at the front and two hinges at the rear. All reflectors are mounted with captive screws, 3 on the 14" or 4 on the 18". Reflectors are designed to be fully rotatable.



SERVICING PROCEDURE

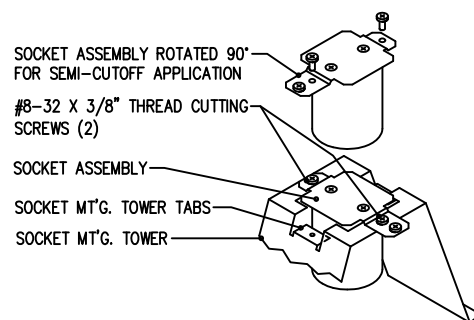
LENS DOOR: Opening of lens door is accomplished by twisting (1) captive screw with a flat blade screwdriver and hinging door downward. If it is necessary to remove lens door, this can be accomplished by pushing upward and pulling toward front of luminaire. To replace lens door, reverse the procedure.

REFLECTOR: After opening lens door, the reflector may be removed by twisting the captive screw at each side with a flat blade screwdriver. Unplug reflector from housing by grasping the nylon plug, squeezing together plug release tabs, and gently pulling plug from nylon receptacle. Reflector can be rotated to mount in any of four possible directions. Make sure reflector is oriented properly for your application, as lighting performance is affected. Mount reflector to housing by twisting captive screws into their receptacles.

ELECTRICAL COMPONENTS: All electrical components are mounted to a removable chassis assembly mounted to the upper or rear inner luminaire housing. To gain access to these components, it is only necessary to open lens door and remove and unplug reflector. To remove chassis assembly, first disconnect from input wires by grasping the nylon plug, squeezing together plug release tabs, and gently pulling plug from nylon receptacle. Next, loosen the nuts holding the chassis assembly to the housing. Move chassis assembly toward front of luminaire until it can be lowered past nuts. Replace chassis assembly by reversing this procedure, being sure to move chassis assembly as far as possible toward back of luminaire before tightening nuts.

INSTALLATION PROCEDURE FOR SEMI-CUTOFF REFLECTOR

1. Remove (2) #8-32 X 3/8" thread cutting screws.
2. Rotate socket assembly 90° and drop it in place on socket mt'g. tower tabs. Secure in position with (2) #8-32 X 3/8" thread cutting screws.



INSTRUCTIONS GIVEN HEREIN DO NOT CLAIM TO ENCOMPASS ALL DETAILS OR VARIATIONS IN THE EQUIPMENT SUPPLIED OR THE PROCEDURE DESCRIBED, NOR CLAIMS TO PROVIDE INFORMATION TO COVER ALL CONTINGENCIES DURING INSTALLATION, OPERATION OR MAINTENANCE. WHERE FURTHER DIRECTIONS OR INFORMATION IS REQUIRED PLEASE CONTACT YOUR EMCO SALES REPRESENTATIVE.