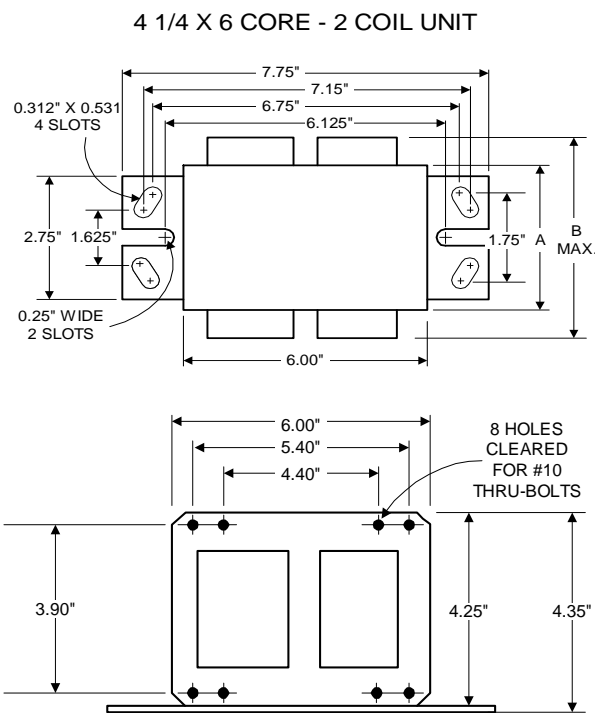


PHILIPS ADVANCE

Metal
Halide
Lamp Ballast

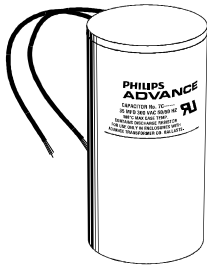
Catalog Number 71A64F2T
For 750W M149 (Pulse Start)
60 Hz SUPER-CWA
Status: Active

DIMENSIONS AND DATA



| | | | | | | |
|--|----------------|-----------|-----------|-----------|---|---|
| INPUT VOLTS | | 277 | 347 | 480 | | |
| CIRCUIT TYPE | SUPER-CWA | | | | | |
| POWER FACTOR (min) | 90% | | | | | |
| REGULATION | | | | | | |
| Line Volts | ±10% | | | | | |
| Lamp Watts | ±10% | | | | | |
| LINE CURRENT (Amps) | | | | | | |
| Operating..... | | 3.00 | 2.45 | 1.75 | | |
| Open Circuit..... | | 1.80 | 1.45 | 1.00 | | |
| Starting..... | | 2.20 | 1.65 | 1.25 | | |
| UL TEMPERATURE RATINGS | | | | | | |
| Insulation Class | H(180°C) | | | | | |
| Coil Temperature Code | 1029 | E | E | E | | |
| MIN. AMBIENT STARTING TEMP. | -20°F or -30°C | | | | | |
| NOM. OPEN CIRCUIT VOLTAGE | 355 | | | | | |
| INPUT VOLTAGE AT LAMP DROPOUT..... | | 138 | 174 | 240 | | |
| INPUT WATTS | 818 | | | | | |
| RECOMMENDED FUSE (Amps)..... | | 8 | 7 | 5 | | |
| CORE and COIL | | | | | | |
| Dimension (A) | 2.28 | | | | | |
| Dimension (B) | 4.25 | | | | | |
| Weight (lbs.) | 17 | | | | | |
| Lead Lengths | 12" | | | | | |
| CAPACITOR REQUIREMENT | | | | | | |
| Microfarads | 28.0 | | | | | |
| Volts (min.) | 400 | | | | | |
| Fault Current Withstand (amps) | | | | | | |
| 60 Hz TEST PROCEDURES (Refer to Advance Test Procedure for HID Ballasts - Form 1270) | | | | | | |
| High Potential Test (Volts) | | | | | | |
| 1 minute | 2000 | | | | | |
| 2 seconds | 2500 | | | | | |
| Open Circuit Voltage Test (Volts) | 320-390 | | | | | |
| Short-Circuit Current Test (Amps) | | | | | | |
| Secondary Current | 5.00-6.00 | | | | | |
| Input Current..... | | 1.70-2.60 | 1.35-2.05 | 1.00-1.50 | - | - |

Capacitor: 7C280S40



Capacitance: 28
Dia/Oval Dim: 2.00
Height: 4.8
Temp Rating: 105°C

Wiring Diagram:

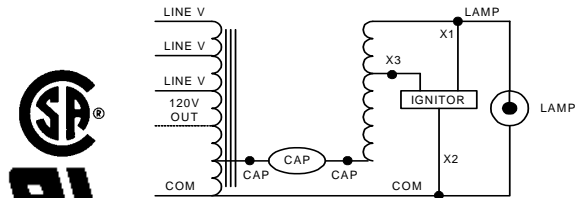
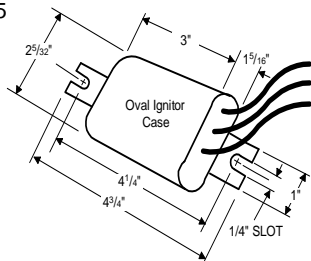


Fig. MT4

Ordering Information

| Order Suffix | Description |
|--------------|-------------|
| | |

Ignitor: LI573-H5



Ballast to Lamp Distance (BTL) = 15 feet
Temp Rating: 105°C

Data is based upon tests performed by Philips Lighting Electronic N.A. in a controlled environment and representative of relative performance. Actual performance can vary depending on operating conditions. Specifications are subject to change without notice.

Philips Lighting Electronic N.A.

10275 West Higgins Road · Rosemont, IL 60018 · Tel:800-322-2086 Fax:888-432-1882
Customer Support/ Technical Service:800-372-3331 · OEM Support: 866-915-5886

07/14/11