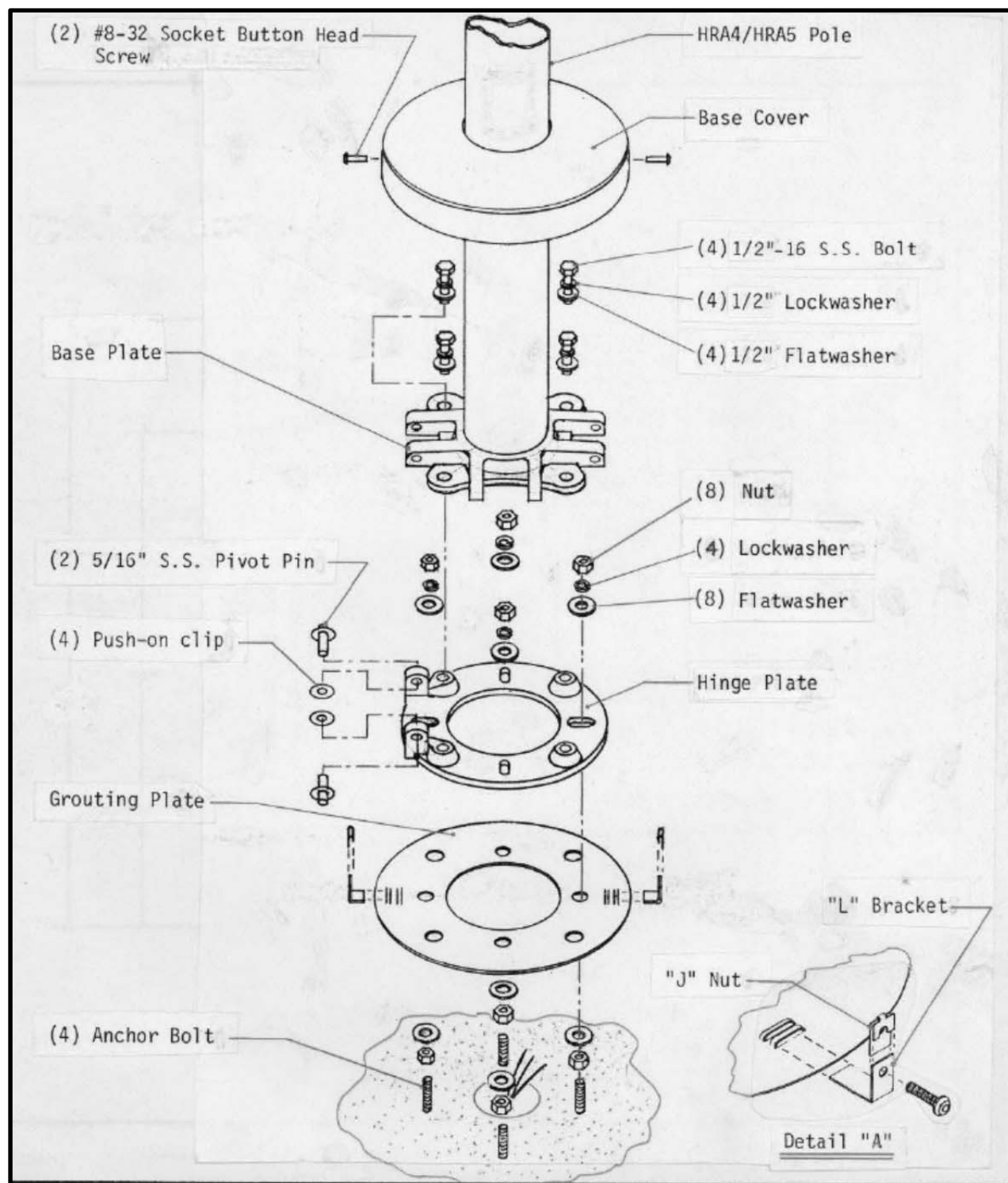


INSTALLATION INSTRUCTIONS

HRA4



INSTALLATION INSTRUCTIONS

HRA5 HINGED ROUND ALUMINUM POLES

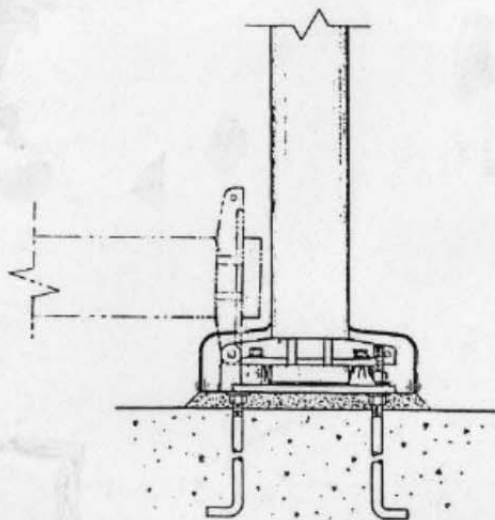
PHILIPS



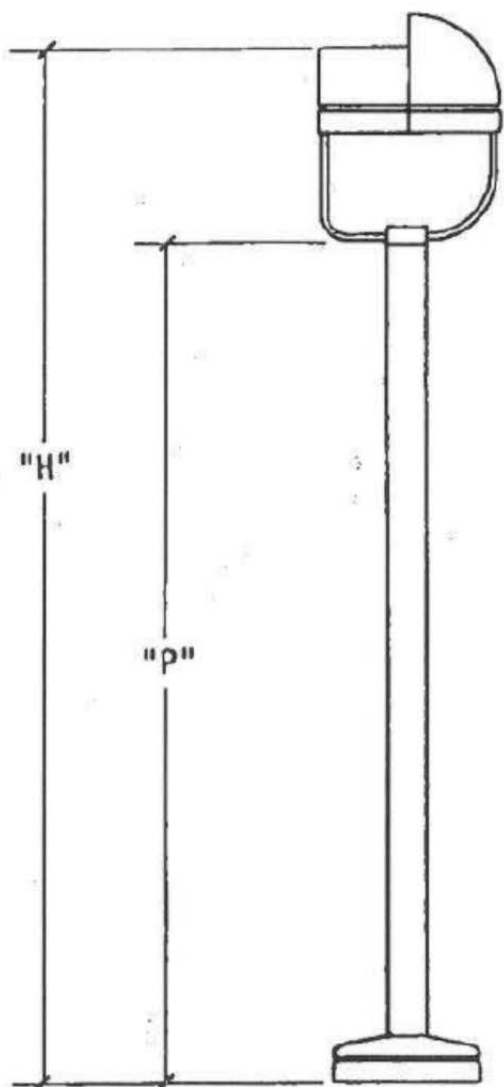
IMPORTANT: Please read the following instructions prior to installing Gardco HRA4/HRA5 poles. See back page for pole/luminaire height information.

INSTALLATION PROCEDURES

1. Snap "J" nuts on "L" brackets (See Detail "A") and slide "L" brackets into slots in the grouting plate.
2. Install lower nuts and flat washers on anchor bolts.
3. Place grouting plate and hinge plate on anchor bolts, carefully noting hinge direction per the site plan. Level with hand spirit level and secure with nuts, lockwashers, and flatwashers.
4. With pole in horizontal position, engage pole base to hinge plate. Attach assemblies by inserting pivot pins and push-on clips, as shown.
5. Slip base cover over pole's shaft from top end, and secure with tape approximately 2 ft. above base.
6. Install the luminaire(s) to pole: Refer to applicable luminaire installation instruction. Splice wires and be sure to connect ground wire to the pole's ground terminal.
7. Erect pole and secure with 1/2" S.S. bolts, flat washers, and lockwashers, after applying silicon grease compound to bolt threads (Torque: 40 FT-LBS.)
8. Adjust pole to correct plumb (vertical) position.
9. Fill grout under grouting plate.
10. Slide cover down over base and secure to "L" brackets with button head screws.



PHILIPS



Mtg. Ht. "H"	Nominal pole height "P"	
	4" pole CP/MP 17	5" pole CP/MP 22
8'	6' - 6"	N/A
10'	8' - 6"	8' - 2"
12'	10' - 6"	10' - 2"
15'	13' - 6"	13' - 2"
18'	N/A	N/A
20'	N/A	N/A
25'	N/A	N/A

POLE/LUMINAIRE HEIGHT INFORMATION



© 2016 Philips Lighting Holding B.V. All rights reserved.
www.philips.com/luminaires

B815055 Rev. B
 Page 3 of 3

Philips Lighting North America
 Corporation
 200 Franklin Square Drive,
 Somerset, NJ 08873, USA

Philips Lighting Canada Ltd.
 281 Hillmount Road,
 Markham ON, Canada L6C 2S3